



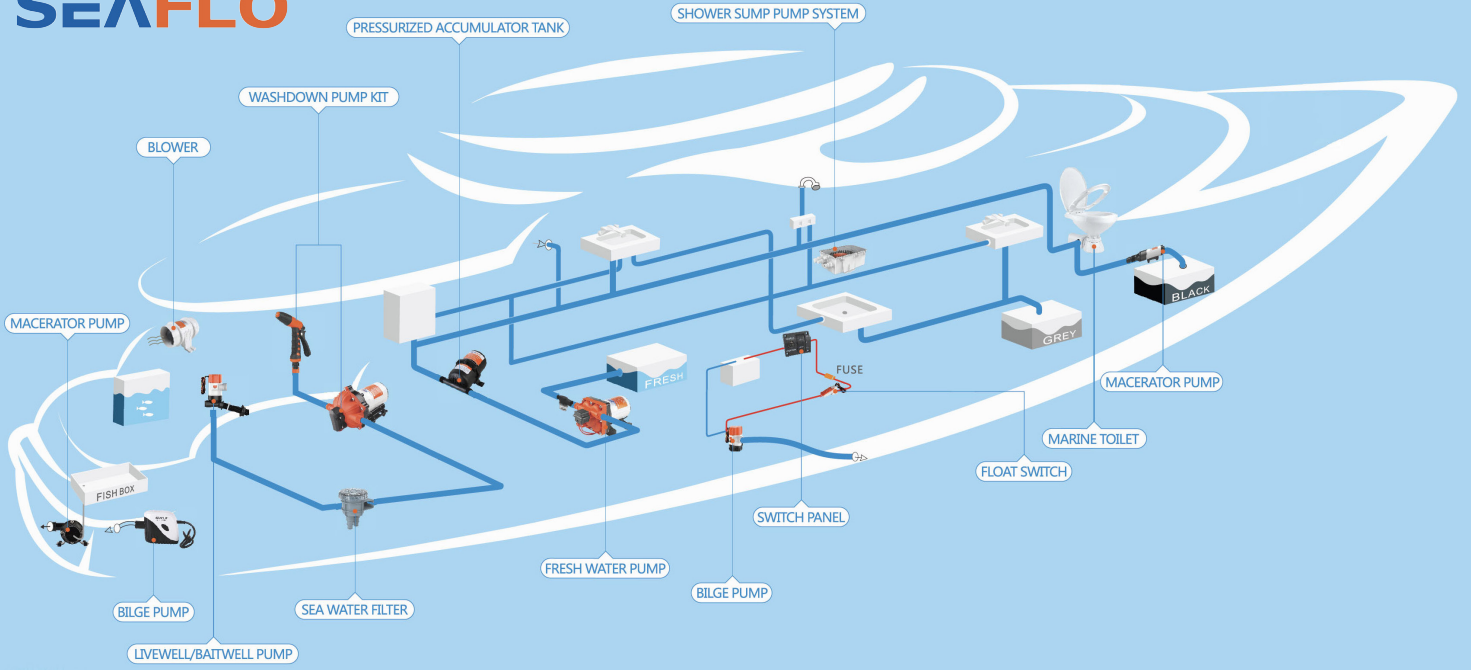
MARINE  
EQUIPMENT

Trade Catalogue  
Issue 3



SEAFLO is an ISO9001 certified manufacturer of Marine, RV and Water Sports products. The company was founded in 2011 and has production space and warehousing covering over 160,000 square meters from which its annual sales exceed 4 million items shipped to over 100 countries. SEAFLO have over 160 patents and their products have passed CE, ROHS, CSA, NSF FDA, REACH ISO8846 & ISO8849 certifications. SEAFLO is a member of industry organisations like NMMA, ABYC and RIVA.





**BILGE PUMPS/LIVEWELL PUMPS**



**WATER PRESSURE PUMPS**



**SEA WATER FILTERS**



**SUBMERSIBLE/INLINE PUMPS**



**WASHDOWN PUMP KITS**



**TOILETS**



**SWITCH PANELS/FLOAT SWITCHES**



**ACCUMULATOR TANK  
WATER PRESSURE SYSTEMS**



**MACERATOR PUMPS**



**BLOWERS**



**ACCESSORIES**



## NON-AUTOMATIC SUBMERSIBLE BILGE PUMPS – 01 SERIES

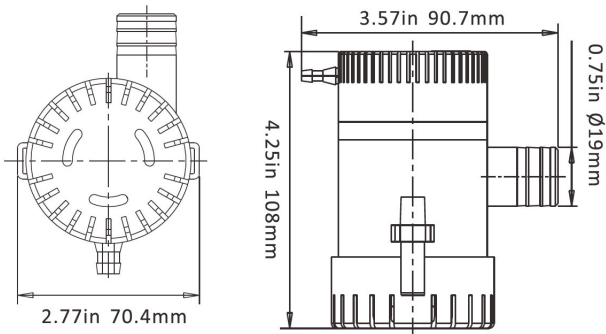
- Entirely submersible
- Snap-off strainer base for easy maintenance
- Strainer base fits industry standard mounting conventions
- Operated via float switch or panel switch (available separately)
- Sealed efficient, long-life motors
- Run dry capable for normal workloads
- Quiet operation
- Ignition protection
- Stainless steel shaft
- Anti-Airlock protection
- Exclusive moisture tight seals
- Marine grade blocked wiring
- 43°C (110°F) temperature limit
- CE, RoHS, ISO 8846 & ISO 8849 standards
- 2 Year Warranty



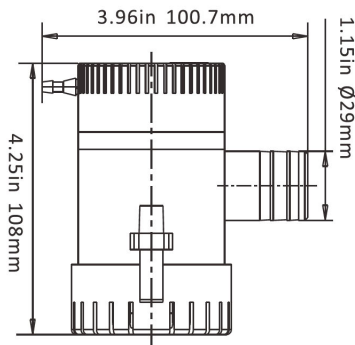
350 GPH / 500 GPH / 750 GPH



1100 GPH



350 GPH / 500 GPH / 750 GPH



1100 GPH



Fully automatic bilge pumps page 146 - 148

### BILGE PUMP AND FLOAT SWITCH BP1G110016



1100GPH, 12V



MAX. 18A



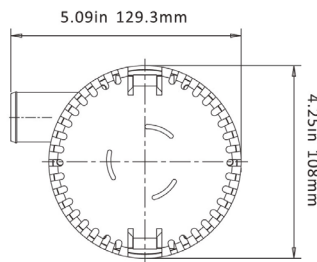
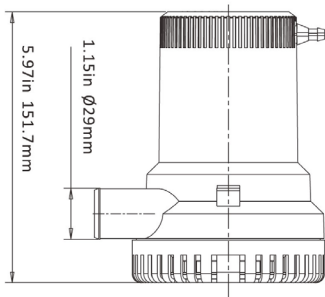
| Art No.    | Flow Rate           | Volts | Current | Head      | Outlet         | Wire         | Weight  |
|------------|---------------------|-------|---------|-----------|----------------|--------------|---------|
| BP1G35001  | 350 GPH / 1325 LPH  | 12 V  | 1.0 A   | 3 m / 10' | 19 mm / 3/4"   | 18 AWG x 1 m | 0.33 kg |
| BP1G50001  | 500 GPH / 1892 LPH  | 12 V  | 1.6 A   | 3 m / 10' | 19 mm / 3/4"   | 18 AWG x 1 m | 0.33 kg |
| BP2G50001  | 500 GPH / 1892 LPH  | 24 V  | 1.2 A   | 3 m / 10' | 19 mm / 3/4"   | 18 AWG x 1 m | 0.33 kg |
| BP1G75001  | 750 GPH / 2839 LPH  | 12 V  | 2.5 A   | 3 m / 10' | 19 mm / 3/4"   | 18 AWG x 1 m | 0.33 kg |
| BP2G75001  | 750 GPH / 2839 LPH  | 24 V  | 1.2 A   | 3 m / 10' | 19 mm / 3/4"   | 18 AWG x 1 m | 0.33 kg |
| BP1G110001 | 1100 GPH / 4164 LPH | 12 V  | 3.0 A   | 4 m / 13' | 29 mm / 1-1/8" | 18 AWG x 1 m | 0.38 kg |
| BP2G110001 | 1100 GPH / 4164 LPH | 24 V  | 1.8 A   | 4 m / 13' | 29 mm / 1-1/8" | 18 AWG x 1 m | 0.38 kg |

See pages 143 - 144 for switches and float switches



NON-AUTOMATIC SUBMERSIBLE BILGE PUMPS – 01 SERIES

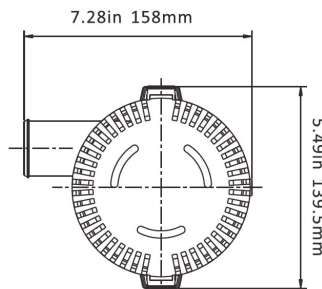
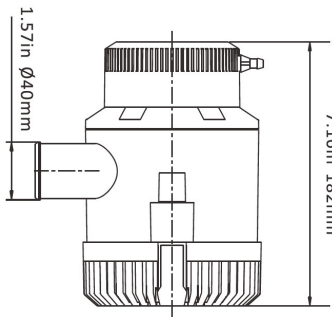
- High efficiency, heavy duty motors for high-capacity output
- Entirely submersible
- Snap-off strainer base for easy maintenance
- Strainer base fits industry standard mounting conventions
- Operated via float switch or panel switch (available separately)
- Sealed efficient, long-life motors
- Run dry capable for normal workloads
- Quiet operation
- Ignition protection
- Stainless steel shaft
- Anti-Airlock protection
- Exclusive moisture tight seals
- Marine grade blocked wiring
- 43°C (110°F) temperature limit
- CE, RoHS, ISO 8846 & ISO 8849 standards
- 2 Year Warranty



1500 GPH / 2000 GPH



1500 GPH / 2000 GPH



3000 GPH / 3500 GPH



3000 GPH / 3500GPH



Fully automatic bilge pumps page 146 - 148

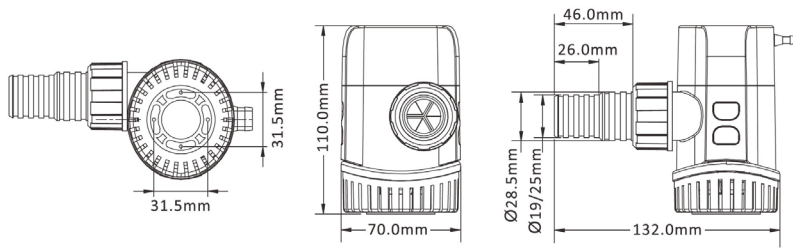
| Art No.    | Flow Rate            | Volts | Current | Head      | Outlet         | Wire         | Weight  |
|------------|----------------------|-------|---------|-----------|----------------|--------------|---------|
| BP1G150001 | 1500 GPH / 5678 LPH  | 12 V  | 8.0A    | 5 m / 16' | 29 mm / 1-1/8" | 14 AWG x 1 m | 1.13 kg |
| BP2G150001 | 1500 GPH / 5678 LPH  | 24 V  | 4.0 A   | 5m / 16'  | 29 mm / 1-1/8" | 14 AWG x 1 m | 1.13 kg |
| BP1G200001 | 2000 GPH / 7570 LPH  | 12 V  | 8.5 A   | 6 m / 19' | 29 mm / 1-1/8" | 14 AWG x 1 m | 1.13 kg |
| BP2G200001 | 2000 GPH / 7570 LPH  | 24 V  | 5.0 A   | 6 m / 19' | 29 mm / 1-1/8" | 14 AWG x 1 m | 1.13 kg |
| BP1G300001 | 3000 GPH / 11356 LPH | 12 V  | 14.0 A  | 8 m / 26' | 40 mm / 1-1/2" | 14 AWG x 1 m | 2.10 kg |
| BP2G300001 | 3000 GPH / 11356 LPH | 24 V  | 7.0 A   | 8 m / 26' | 40 mm / 1-1/2" | 14 AWG x 1 m | 2.10 kg |
| BP1G350001 | 3500 GPH / 13249 LPH | 12 V  | 16.0 A  | 8 m / 26' | 40 mm / 1-1/2" | 14 AWG x 1 m | 2.10 kg |
| BP2G350001 | 3500 GPH / 13249 LPH | 24 V  | 8.0 A   | 8 m / 26' | 40 mm / 1-1/2" | 14 AWG x 1 m | 2.10 kg |

See pages 143 - 144 for switches and float switches

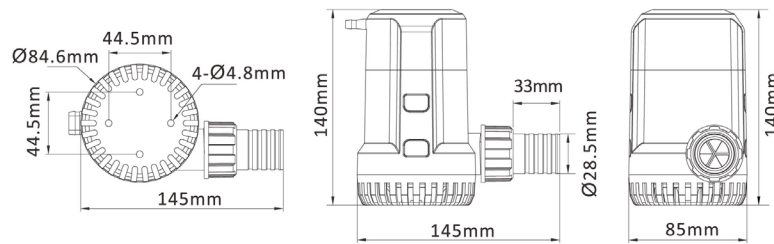


## NON-AUTOMATIC SUBMERSIBLE BILGE PUMPS – 13A SERIES

- Entirely submersible & ignition protected
- Snap-off strainer base for easy maintenance
- Operated via float switch or panel switch (available separately)
- Integral check valve to prevent water back flow
- Sealed efficient, long-life motors
- Quiet operation
- Stainless steel motor shaft
- Anti-Airlock protection
- Exclusive moisture tight seals
- Marine grade silicon blocked, tin coated wiring
- Includes removable threaded discharge straight fitting
- CE, RoHS, ISO 8846 & ISO 8849 standards
- 2 Year Warranty



600 GPM / 800 GPM / 1100 GPM



1500 GPM / 2000 GPM

**SPLIT QUICK-CONNECT JOINT DESIGN NO NEED TO DISCONNECT BASE OR PLUMBING WHEN REPLACING PUMP**



OPTIONAL ACCESSORIES  
1 - 1/8" (29 mm)

Rotation  
Function



600 GPM / 800 GPM / 1100 GPM



1500 GPM / 2000 GPM



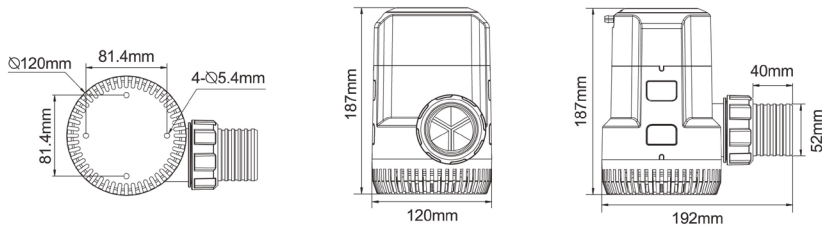
Fully automatic bilge pumps page 146 - 148

| Art No.     | Flow Rate           | Volts | Current | Head         | Outlet                          | Wire | Weight  |
|-------------|---------------------|-------|---------|--------------|---------------------------------|------|---------|
| BP1G60013A  | 600 GPH / 2271 LPH  | 12 V  | 2.5 A   | 2.5 m / 7.5' |                                 | 1 m  | 0.40 kg |
| BP2G60013A  | 600 GPH / 2271 LPH  | 24 V  | 1.5 A   | 2.5 m / 7.5' | 19 mm / 3/4" & 29 mm / 1 - 1/8" | 1 m  | 0.40 kg |
| BP1G80013A  | 800 GPH / 3028 LPH  | 12 V  | 3.5 A   | 3 m / 10'    |                                 | 1 m  | 0.40 kg |
| BP2G80013A  | 800 GPH / 3028 LPH  | 24 V  | 2.0 A   | 3 m / 10'    |                                 | 1 m  | 0.40 kg |
| BP1G110013A | 1100 GPH / 4164 LPH | 12 V  | 4.0 A   | 4 m / 12'    | 25 mm / 1" & 29 mm / 1-1/8"     | 1 m  | 0.40 kg |
| BP2G110013A | 1100 GPH / 4164 LPH | 24 V  | 2.5 A   | 4 m / 12'    |                                 | 1 m  | 0.40 kg |
| BP1G150013A | 1500 GPH / 5678 LPH | 12 V  | 4.5 A   | 5 m / 16.4'  | 29 mm / 1-1/8"                  | 1 m  | 0.65 kg |
| BP2G150013A | 1500 GPH / 5678 LPH | 24 V  | 2.5 A   | 5 m / 16.4'  |                                 | 1 m  | 0.65 kg |
| BP1G200013A | 2000 GPH / 7570 LPH | 12 V  | 7.5 A   | 5.5 m / 18'  | 29 mm / 1-1/8"                  | 1 m  | 0.75 kg |
| BP2G200013A | 2000 GPH / 7570 LPH | 24 V  | 4.0 A   | 5.5 m / 18'  |                                 | 1 m  | 0.75 kg |



## NON-AUTOMATIC SUBMERSIBLE BILGE PUMPS – 13A SERIES

- Entirely submersible & ignition protected
- Snap-off strainer base for easy maintenance
- Operated via float switch or panel switch (available separately)
- Integral check valve to prevent water back flow
- Run dry capable for normal workloads
- Sealed efficient, long-life motors
- Quiet operation
- Stainless steel motor shaft
- Anti-Airlock protection
- Exclusive moisture tight seals
- Marine grade silicon blocked, tin coated wiring
- Includes removable threaded discharge straight fitting
- CE, RoHS, ISO 8846 & ISO 8849 standards
- 2 Year Warranty

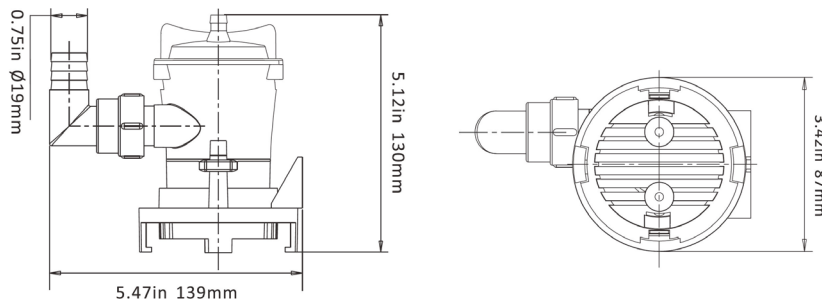


**3000 GPH / 3700 GPH / 4700 GPH**

| Art No.            | Flow Rate            | Volts | Current | Head          | Outlet                        | Wire | Weight  |
|--------------------|----------------------|-------|---------|---------------|-------------------------------|------|---------|
| <b>BP1G300013A</b> | 3000 GPH / 11356 LPH | 12 V  | 12.0 A  | 5.5 m / 18'   | 40 mm / 1 - 1/2" & 50 mm / 2" | 1 m  | 2.10 kg |
| <b>BP2G300013A</b> | 3000 GPH / 11356 LPH | 24 V  | 6.0 A   | 5.5 m / 18'   |                               | 1 m  | 2.10 kg |
| <b>BP1G370013A</b> | 3700 GPH / 14006 LPH | 12 V  | 25.0 A  | 6 m / 19.7'   | 40 mm / 1 - 1/2" & 50 mm / 2" | 1 m  | 2.10 kg |
| <b>BP2G370013A</b> | 3700 GPH / 14006 LPH | 24 V  | 7.0 A   | 6 m / 19.7'   |                               | 1 m  | 2.10 kg |
| <b>BP1G470013A</b> | 4700 GPH / 17791 LPH | 12 V  | 16.0 A  | 6.5 m / 21.3' | 40 mm / 1 - 1/2" & 50 mm / 2" | 1 m  | 2.10 kg |
| <b>BP2G470013A</b> | 4700 GPH / 17791 LPH | 24 V  | 14.0 A  | 6.5 m / 21.3' |                               | 1 m  | 2.10 kg |

## NON-AUTOMATIC SUBMERSIBLE BILGE PUMPS – 03 SERIES

- Entirely submersible
- Side mounting bracket/strainer base
- Easy clean snap-lock strainer base
- Operated via float switch or panel switch (available separately)
- Includes straight & 90° threaded hose barb
- Spring loaded, one hand push button cartridge removal system
- Sealed efficient, long-life motors
- Run dry capable for normal workloads
- Quiet & vibrationless operation
- Ignition protection
- Stainless steel shaft
- Exclusive moisture tight seals
- Marine grade blocked wiring
- 43°C (110°F) temperature limit
- 2 Year Warranty



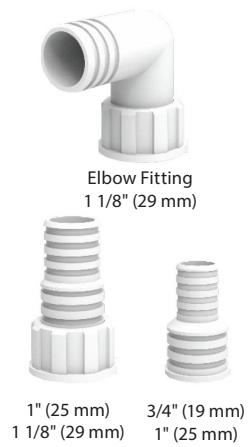
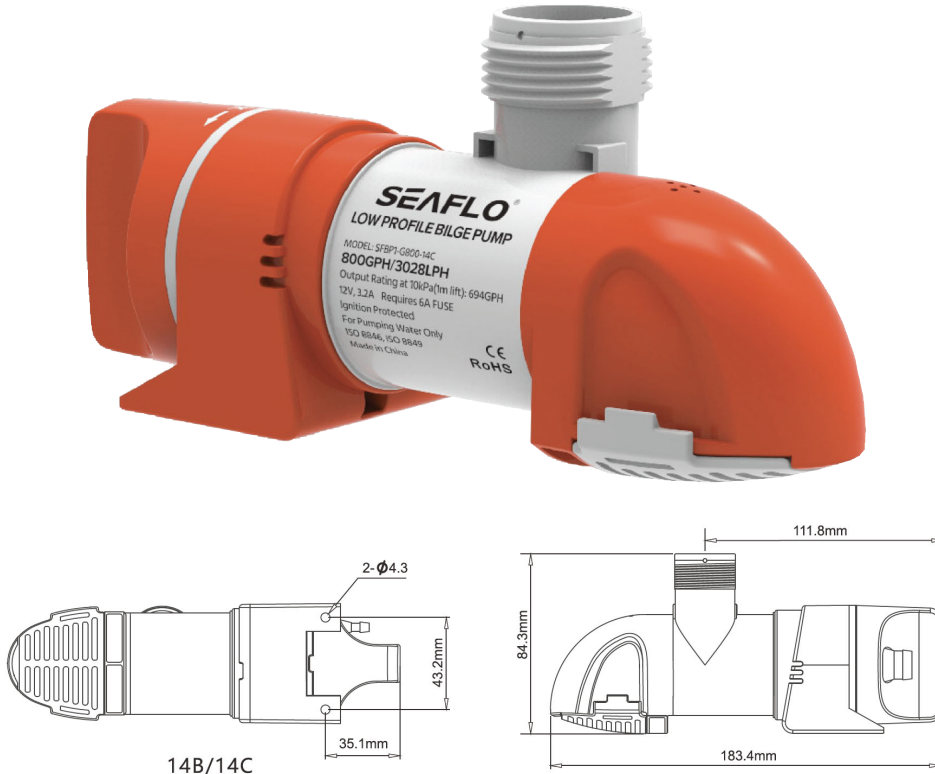
Quick change feature removes and installs in seconds

| Art No.          | Flow Rate          | Volts | Current | Head          | Outlet       | Wire         | Weight  |
|------------------|--------------------|-------|---------|---------------|--------------|--------------|---------|
| <b>BP1G35003</b> | 350 GPH / 1324 LPH | 12 V  | 1.0 A   | 3.0 m / 10'   | 19 mm / 3/4" | 18 AWG x 1 m | 0.37 kg |
| <b>BP1G60003</b> | 600 GPH / 2271 LPH | 12 V  | 3.0 A   | 3.5 m / 11.5' | 19 mm / 3/4" | 18 AWG x 1 m | 0.37 kg |
| <b>BP1G80003</b> | 800 GPH / 3028 LPH | 12 V  | 4.0 A   | 4.0 m / 13'   | 19 mm / 3/4" | 18 AWG x 1 m | 0.37 kg |

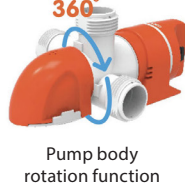


## LOW PROFILE NON-AUTOMATIC BILGE PUMP – 14C SERIES

- Low narrow design for tight/awkward bilge spaces
- Outlet & pump body can rotate 360° to suit your installation
- Can be mounted horizontally or vertically
- Low profile strainer - Leaves the bilge almost dry
- Entirely submersible & ignition protected
- Sealed efficient, long-life motors with low power consumption
- Quiet operation
- Snap fit assembly makes it easy to remove for cleaning
- Efficient operation - very low power consumption
- Integrated non-return check valve to prevent backflow
- Operated via float switch or panel switch (available separately)
- Includes straight & 90° threaded hose barbs
- Anti-Airlock protection
- Five-blade impeller to ensure high flow rate
- Exclusive moisture tight seals
- Stainless-steel motor shaft
- Marine grade silicon blocked, tin coated wiring
- CE, RoHS, ISO 8846 & ISO 8849 standards
- 2 Year Warranty



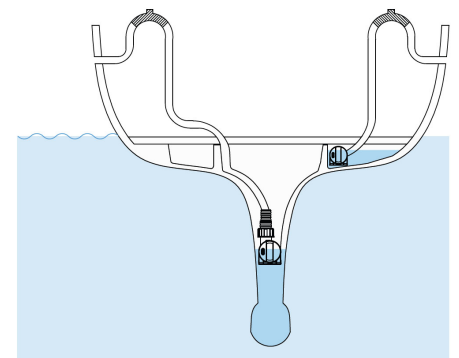
### SPLIT QUICK-CONNECT JOINT DESIGN NO NEED TO DISCONNECT BASE OR PLUMBING WHEN REPLACING PUMP



Take out motor and fasten with screw before installing the pump



Fully automatic bilge pumps page 146 - 148



Fits in tight/awkward places

| Art No.     | Flow Rate           | Volts | Current | Head          | Outlet  | Wire         | Weight  |
|-------------|---------------------|-------|---------|---------------|---|--------------|---------|
| BP1G80014C  | 800 GPH / 3028 LPH  | 12 V  | 3.2 A   | 3.2 m / 10.5' |   | 18 AWG x 1 m | 0.35 kg |
| BP2G80014C  | 800 GPH / 3028 LPH  | 24 V  | 2.0 A   | 3.2 m / 10.5' | 19 mm / 3/4",<br>25 mm / 1" &<br>29 mm / 1-1/8" | 18 AWG x 1 m | 0.35 kg |
| BP1G110014C | 1100 GPH / 4163 LPH | 12 V  | 4.2 A   | 4.0 m / 13'   |   | 18 AWG x 1 m | 0.35 kg |
| BP2G110014C | 1100 GPH / 4163 LPH | 24 V  | 3.0 A   | 4.0 m / 13'   |   | 18 AWG x 1 m | 0.35 kg |

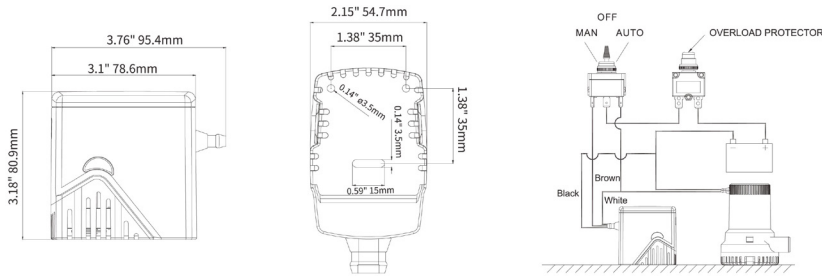
See pages 143 - 144 for switches and float switches





**ELECTROMAGNETIC FLOAT SWITCH – 05 SERIES**

- Extremely reliable innovative design
- Uses a magnetic contact to activate the pump meaning the switch is less prone to water ingress
- Enclosed construction helps eliminate large debris from reaching the mechanism
- Quick attach base offers simple maintenance
- Works with any non-automatic bilge pump
- Designed for pumps up to 25 Amps
- Mercury free
- 2 Year warranty



| Art No. | Max Amps (12 Volts) | Wire         | Weight  |
|---------|---------------------|--------------|---------|
| BS2505  | 25 A                | 16 AWG x 1 m | 0.20 kg |

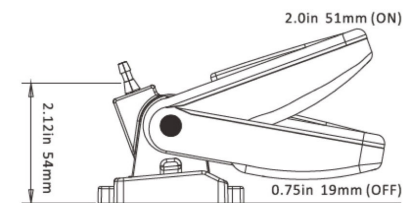
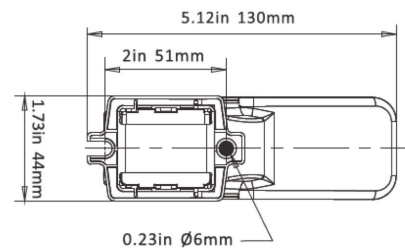
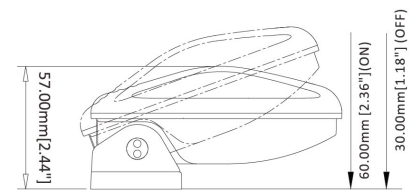
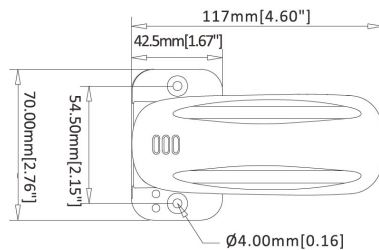
**FLOAT SWITCH – 01 & 02 SERIES**

**02 SERIES**

- Offers reliable control of bilge pumps drawing up to 18A max
- Heavy duty switch designed for the toughest applications
- Unique internal steel bearing activation
- Turns pump on when water level reaches 60mm
- Turns pump off when water level reaches 30mm
- Easy to install
- Mercury free

**01 SERIES**

- Offers reliable control of bilge pumps drawing up to 20A max
- Heavy duty switch designed for the toughest applications
- Turns pump on when water level reaches 51mm
- Turns pump off when water level reaches 19mm
- Easy to install
- Mercury free
- For fresh and sea water

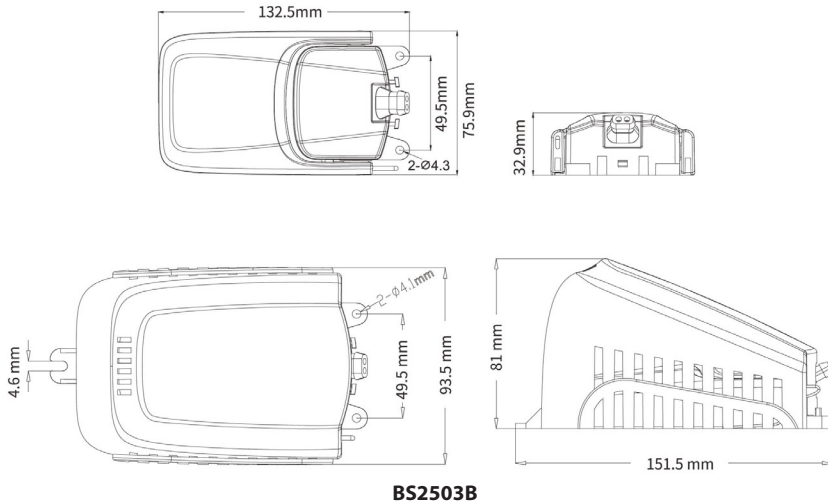


| Art No. | Max Amps (12 Volts) | Max Amps (24 Volts) | Wire         | Weight  |
|---------|---------------------|---------------------|--------------|---------|
| BPS2001 | 20 A                | 10 A                | 18 AWG x 1 m | 0.16 kg |
| BPS1802 | 18 A                | 8 A                 | 16 AWG x 1 m | 0.14 kg |



## FLOAT SWITCHES – 03

- 03 Series for bilge pumps drawing up to 25A
- Both switches available with or without a strainer housing to prevent fouling by debris
- High-quality ABS shell material with internal metal contacts to ensure reliable switching
- Ultrasonic welding gives a secure & leakproof float
- Designed for the toughest applications
- Compact design, easy installation
- Turns on when water level higher than 45-55mm
- Turns off when water level lower than 20-25mm
- Mercury free
- For fresh and sea water

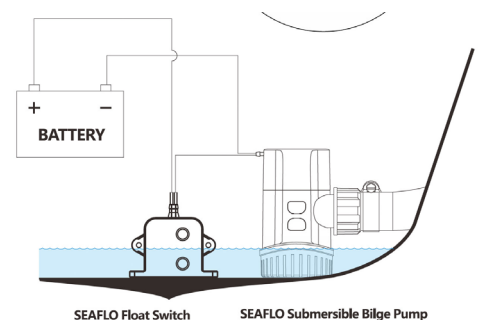
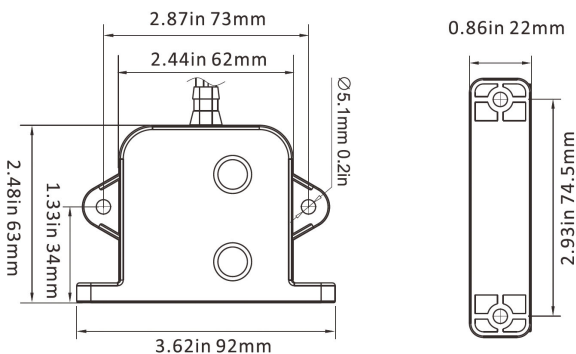


| Art No. | Max Amps (12 Volts) | Strainer Housing | Wire         | Weight  |
|---------|---------------------|------------------|--------------|---------|
| BS2503A | 25 A                | No               | 14 AWG x 1 m | 0.12 kg |
| BS2503B | 25 A                | Yes              | 14 AWG x 1 m | 0.19 kg |

## ELECTRIC FIELD BILGE SWITCH

This Seaflo electric field bilge switch senses the water level and automatically controls a 12 or 24 V bilge pump. The switch turns on when it senses 41 mm (1.6") water level and turns off when water is below 9.5 mm (0.37"). This product is designed for use in pleasure boat applications, and is not intended to be used in commercial marine and boating applications or for any other use.

- Ideal for use with electric bilge pumps
- Rated to handle pumps up to 20 A at 12 V or 10 A at 24 V.
- No moving parts, totally sealed solid state electronics and field detectors
- No exposed sensors eliminate corrosion possibilities
- Activates at a 41 mm (1.6") fluid level and deactivates at a 9.5 mm (0.37") fluid level
- A three second delay prevents false starts from water sloshing in the bilge
- Easy to install, mounted on either horizontal or vertical surface (e.g. bulkhead or hull)



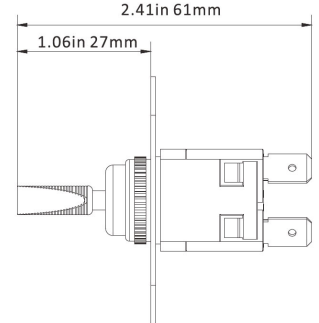
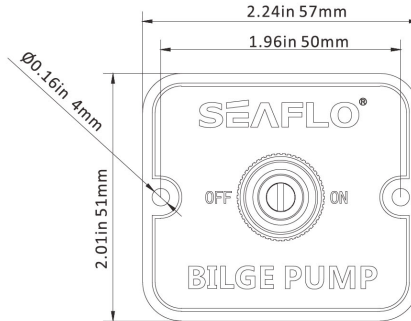
| Art No. | Voltage        | Current                      | Wire         | Weight |
|---------|----------------|------------------------------|--------------|--------|
| BS2006  | 12 V / 24 V DC | 20 A at 12 V or 10 A at 24 V | 16 AWG x 1 m | 0.1 kg |



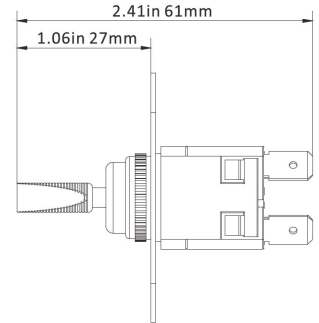
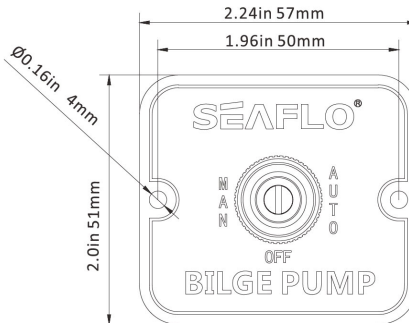
**SWITCH PANELS**

- For controlling any bilge pump equipped with a float switch
- Simple, clean and easy to install

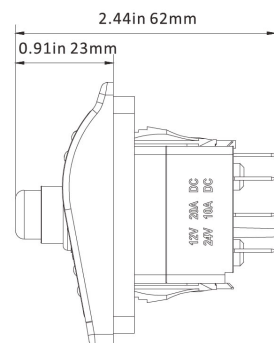
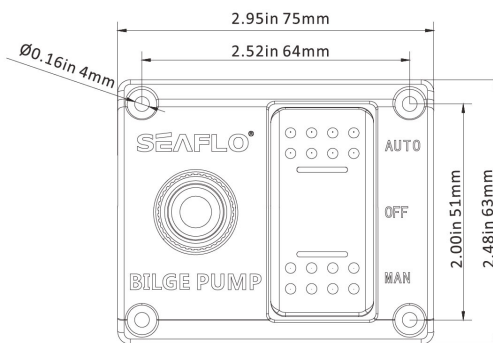
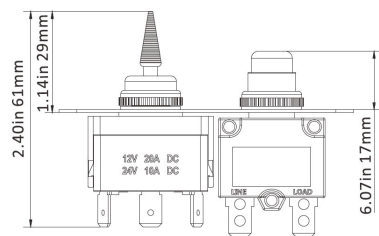
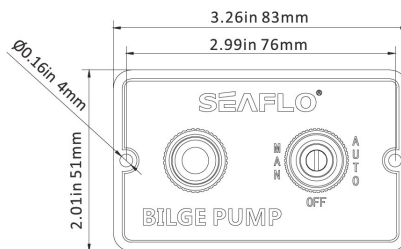
- LED indicator to show when switch is on
- 3-Position models have a "fail safe" spring return to "off" from the "manual" position so the pump can't be left running by accident



2-way



3-way



| Art No. | Volts       | LED Light | Switch Positions | Panel Material | Integral Fuse | Panel Size    | Weight  |
|---------|-------------|-----------|------------------|----------------|---------------|---------------|---------|
| SP02    | 12 V & 24 V | Yes       | OFF-ON           | Aluminium      | N/A           | 57 mm x 51 mm | 0.45 kg |
| SP01    | 12 V & 24 V | Yes       | MAN-OFF-AUTO     | Aluminium      | N/A           | 57 mm x 51 mm | 0.45 kg |
| SP01501 | 12 V & 24 V | Yes       | MAN-OFF-AUTO     | Aluminium      | 15 A          | 83 mm x 51 mm | 0.60 kg |
| SP01502 | 12 V & 24 V | Yes       | MAN-OFF-AUTO     | Plastic        | 15 A          | 75 mm x 63 mm | 0.62 kg |



## ELECTRONIC TIMER SENSING AUTOMATIC BILGE PUMPS – 13B SERIES

Compact electronic sensing bilge pumps that automatically turn the pump impeller every 2 1/2 minutes for approximately 0.5 second. If water is present, the pump will sense resistance and will continue to run until all water is removed.

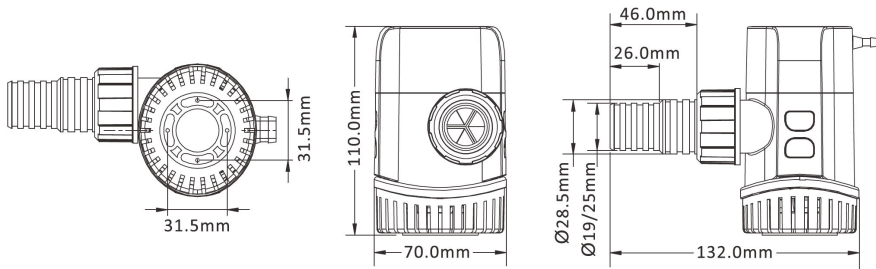
- No float switch required
- Removable strainer and impeller area for easy cleaning
- Larger impeller design and more robust motors outperform competitors pumps
- Back Up Feature — prevents continuous running if sensor is fouled by debris
- Entirely submersible & ignition protected
- Snap-off strainer base for easy maintenance
- Integral check valve to prevent water back flow
- Sealed efficient, long-life motors
- Quiet operation
- Stainless steel motor shaft
- Anti-Airlock protection
- Exclusive moisture tight seals
- Marine grade silicon blocked, tin coated wiring
- Includes removable threaded discharge straight fitting
- CE, RoHS, ISO 8846 & ISO 8849 standards
- 2 Year Warranty



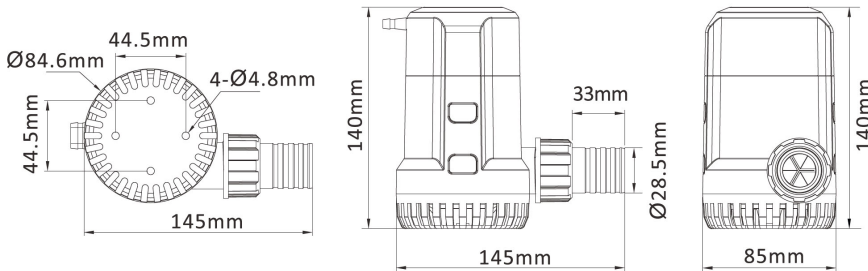
Standard Straight Fitting  
1" (25 mm) or  
1 1/8" (29 mm)



Standard Straight Fitting  
1 1/8" (29 mm)



600, 800, 1100



1500, 2000

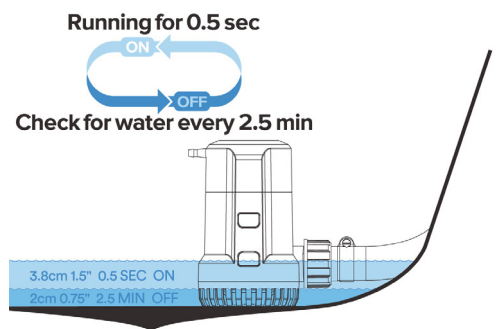
**SPLIT QUICK-CONNECT JOINT DESIGN NO NEED TO DISCONNECT BASE OR PLUMBING WHEN REPLACING PUMP**



**OPTIONAL ACCESSORIES**  
1 - 1/8" (29 mm)



Rotation  
Function



| Art No.              | Flow Rate           | Volts | Current | Head         | Outlet                           | Wire         | Weight  |
|----------------------|---------------------|-------|---------|--------------|----------------------------------|--------------|---------|
| <b>BP1G60013B</b>    | 600 GPH / 2271 LPH  | 12 V  | 2.5 A   | 2.5 m / 7.5' |                                  | 18 AWG x 1 m | 0.40 kg |
| <b>BP2G60013B</b>    | 600 GPH / 2271 LPH  | 24 V  | 1.5 A   | 2.5 m / 7.5' | 19 mm / 3/4" &<br>29 mm / 1-1/8" | 18 AWG x 1 m | 0.40 kg |
| <b>BP1G80013B</b>    | 800 GPH / 3028 LPH  | 12 V  | 3.5 A   | 3 m / 10'    |                                  | 18 AWG x 1 m | 0.40 kg |
| <b>SFBP2-G80013B</b> | 800 GPH / 3028 LPH  | 24 V  | 2.0 A   | 3 m / 10'    |                                  | 18 AWG x 1 m | 0.40 kg |
| <b>BP1G110013B</b>   | 1100 GPH / 4164 LPH | 12 V  | 4.0 A   | 4 m / 13'    | 25 mm / 1" &<br>29mm / 1-1/8"    | 18 AWG x 1 m | 0.40 kg |
| <b>BP2G110013B</b>   | 1100 GPH / 4164 LPH | 24 V  | 2.5 A   | 4 m / 13'    | 29mm / 1-1/8"                    | 18 AWG x 1 m | 0.40 kg |
| <b>BP1G150013B</b>   | 1500 GPH / 5678 LPH | 12 V  | 4.5 A   | 5 m / 16'    | 29mm / 1-1/8"                    | 18 AWG x 1 m | 0.68 kg |
| <b>BP2G150013B</b>   | 1500 GPH / 5678 LPH | 24 V  | 2.5 A   | 5 m / 16'    | 29mm / 1-1/8"                    | 14 AWG x 1 m | 0.68 kg |
| <b>BP1G200013B</b>   | 2000 GPH / 7570 LPH | 12 V  | 7.5 A   | 5.5 m / 18'  | 29mm / 1-1/8"                    | 14 AWG x 1 m | 0.78 kg |
| <b>BP2G200013B</b>   | 2000 GPH / 7570 LPH | 24 V  | 4.0 A   | 5.5 m / 18'  | 29mm / 1-1/8"                    | 14 AWG x 1 m | 0.78 kg |

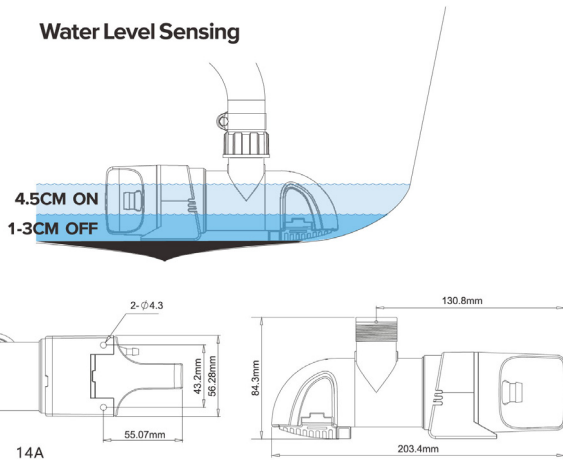


## LOW PROFILE AUTOMATIC BILGE PUMPS

- Two versions available – Water Level Sensing or Timer Sensing
- No float switch required
- Low narrow design for tight/awkward bilge spaces
- Outlet & pump body can rotate 360° to suit your installation
- Can be mounted horizontally or vertically
- Low profile strainer - Leaves the bilge almost dry
- Entirely submersible & ignition protected
- Can be mounted horizontally, vertically or diagonally
- Sealed efficient, long-life motors with low power consumption
- Quiet operation
- Snap fit assembly makes it easy to remove for cleaning
- Efficient operation - very low power consumption
- Integrated non-return check valve to prevent backflow
- Includes straight & 90° threaded hose bars
- Anti-Airlock protection
- Five-blade impeller to ensure high flow rate
- Exclusive moisture tight seals
- Stainless-steel motor shaft
- Marine grade silicon blocked, tin coated wiring
- CE, RoHS, ISO 8846 & ISO 8849 standards
- 2 Year Warranty

### 14A SERIES – WATER LEVEL SENSING

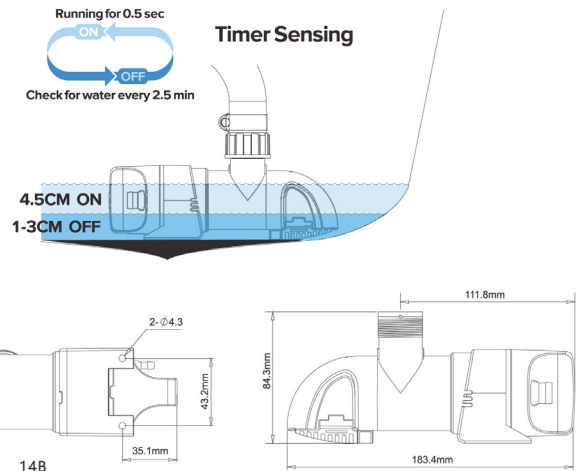
- Electrical contacts on the pump sense when water is present and turn the pump on/off accordingly
- Pump starts when the water reaches 4.5cm



Included 1" (25 mm) 3/4" (19 mm) Elbow Fitting  
1 1/8" (29 mm) 1" (25 mm) 1 1/8" (29 mm)

### 14B SERIES – TIMER SENSING

- Pump starts running every 2-1/2 minutes for approximately 0.5 second. If water is present, the pump will sense resistance and will continue to run until water is removed
- Pump starts when the water reaches 4.5cm



**SPLIT QUICK-CONNECT JOINT DESIGN NO NEED TO DISCONNECT BASE OR PLUMBING WHEN REPLACING PUMP**



Rotation Function



Pump body rotation function



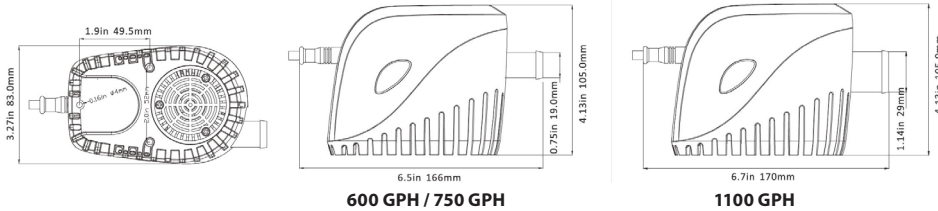
Take out motor and fasten with screw before installing the pump

| Art No.     | Flow Rate           | Volts | Current | Head          | Outlet                       | Wire  | Weight  |
|-------------|---------------------|-------|---------|---------------|------------------------------|---|---------|
| BP1G80014A  | 800 GPH / 3028 LPH  | 12 V  | 3.2 A   | 3.2 m / 10.5' | Automatic Water Level Sensor | 19 mm / 3/4",<br>25 mm / 1" &<br>29 mm / 1-1/8" | 0.39 kg |
| BP2G80014A  | 800 GPH / 3028 LPH  | 24 V  | 2.0 A   | 3.2 m / 10.5' |                              |   | 0.39 kg |
| BP1G110014A | 1100 GPH / 4164 LPH | 12 V  | 4.2 A   | 4 m / 13'     |                              |   | 0.39 kg |
| BP2G110014A | 1100 GPH / 4164 LPH | 24 V  | 3.0 A   | 4 m / 13'     |                              |   | 0.39 kg |
| BP1G80014B  | 800 GPH / 3028 LPH  | 12 V  | 3.2 A   | 3.2 m / 10.5' | Automatic Timer Sensor       | 19 mm / 3/4",<br>25 mm / 1" &<br>29 mm / 1-1/8" | 0.38 kg |
| BP2G80014B  | 800 GPH / 3028 LPH  | 24 V  | 2.0 A   | 3.2 m / 10.5' |                              |   | 0.38 kg |
| BP1G110014B | 1100 GPH / 4164 LPH | 12 V  | 4.2 A   | 4 m / 13'     |                              |   | 0.38 kg |
| BP2G110014B | 1100 GPH / 4164 LPH | 24 V  | 3.0 A   | 4 m / 13'     |                              |   | 0.38 kg |



## ELECTROMAGNETIC AUTOMATIC BILGE PUMPS

- All-in-one pump & electromagnetic floating sensor switch
- Uses a magnetic contact to activate the pump
- Will not pump oil contaminated water
- Enclosed construction offers advanced reliability
- Entirely submersible
- Snap-off strainer base for easy maintenance
- Sealed efficient, long-life motors
- 43°C (110°F) temperature limit
- CE, RoHS, ISO 8846 & ISO 8849 standards
- 2 Year Warranty

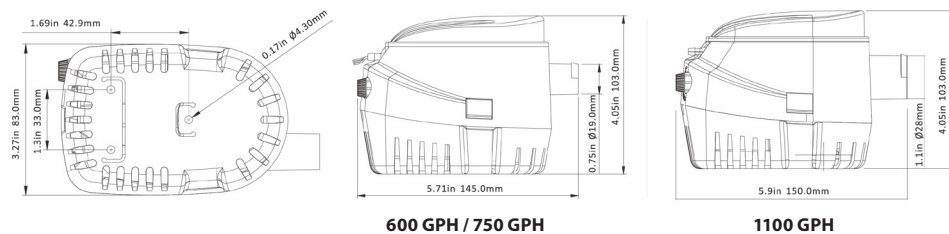


**New innovative quick change feature removes and installs in seconds.** No need to disconnect base or plumbing when replacing pump.

| Art No.    | Flow Rate           | Volts | Current | Head         | Outlet         | Wire         | Weight  |
|------------|---------------------|-------|---------|--------------|----------------|--------------|---------|
| BP1G60011  | 600 GPH / 2271 LPH  | 12 V  | 2.5 A   | 2.5 m / 8.0' | 19 mm / 3/4"   | 18 AWG x 1 m | 0.55 kg |
| BP2G60011  | 600 GPH / 2271 LPH  | 24 V  | 1.5 A   | 2.5 m / 8.0' | 19 mm / 3/4"   | 18 AWG x 1 m | 0.55 kg |
| BP1G75011  | 750 GPH / 2839 LPH  | 12 V  | 3.0 A   | 3 m / 10'    | 19 mm / 3/4"   | 18 AWG x 1 m | 0.55 kg |
| BP2G75011  | 750 GPH / 2839 LPH  | 24 V  | 1.6 A   | 3 m / 10'    | 19 mm / 3/4"   | 18 AWG x 1 m | 0.55 kg |
| BP1G110011 | 1100 GPH / 4164 LPH | 12 V  | 3.0 A   | 4 m / 13'    | 29 mm / 1 1/8" | 18 AWG x 1 m | 0.55 kg |
| BP2G110011 | 1100 GPH / 4164 LPH | 24 V  | 1.8 A   | 4 m / 13'    | 29 mm / 1 1/8" | 18 AWG x 1 m | 0.55 kg |

## MECHANICAL AUTOMATIC BILGE PUMPS

- All-in-one pump & integral float switch
- Pump turns on when water level rises & shuts off when water is removed
- Will not pump oil contaminated water
- Anti-fouling impeller design
- Entirely submersible
- Easy clean snap-lock strainer base
- Sealed efficient, long-life motors
- 43°C (110°F) temperature limit
- CE, RoHS, ISO 8846 & ISO 8849 standards
- 2 Year Warranty



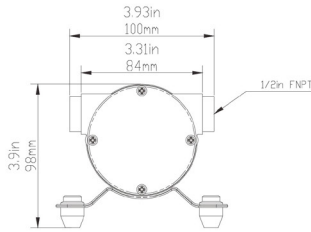
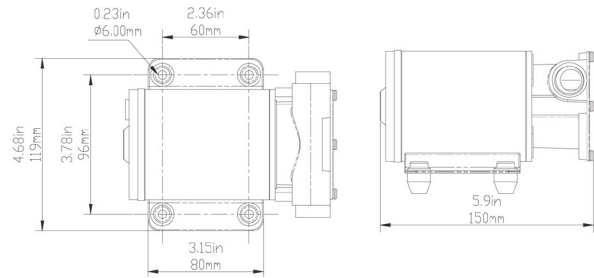
| Art No.    | Flow Rate           | Volts | Current | Head         | Outlet         | Wire         | Weight  |
|------------|---------------------|-------|---------|--------------|----------------|--------------|---------|
| BP1G60006  | 600 GPH / 2271 LPH  | 12 V  | 2.5 A   | 2.5 m / 8.0' | 19 mm / 3/4"   | 18 AWG x 1 m | 0.47 kg |
| BP2G60006  | 600 GPH / 2271 LPH  | 24 V  | 1.5 A   | 2.5 m / 8.0' | 19 mm / 3/4"   | 18 AWG x 1 m | 0.47 kg |
| BP1G75006  | 750 GPH / 2839 LPH  | 12 V  | 3.0 A   | 3 m / 10'    | 19 mm / 3/4"   | 18 AWG x 1 m | 0.47 kg |
| BP2G75006  | 750 GPH / 2839 LPH  | 24 V  | 1.6 A   | 3 m / 10'    | 19 mm / 3/4"   | 18 AWG x 1 m | 0.47 kg |
| BP1G110006 | 1100 GPH / 4164 LPH | 12 V  | 3.0 A   | 4 m / 13'    | 29 mm / 1-1/8" | 18 AWG x 1 m | 0.55 kg |
| BP2G110006 | 1100 GPH / 4164 LPH | 24 V  | 1.8 A   | 4 m / 13'    | 29 mm / 1-1/8" | 18 AWG x 1 m | 0.55 kg |



## SELF-PRIMING IMPELLER BILGE PUMP

Tough, reliable, impeller driven pump for the extraction of bilge water in locations that traditional bilge pumps cannot get to.

- Self-priming
- Sealed motor design
- Thermally protected, high quality efficient Motor
- Seamless shell design
- Priming capability: 1.2m / 4" suction lift
- 80mm / 3.1" rubber/copper impeller
- Stainless Steel Shaft
- 60°C (140°F) temperature limit
- 2 Year Warranty



For hose connectors see page 168

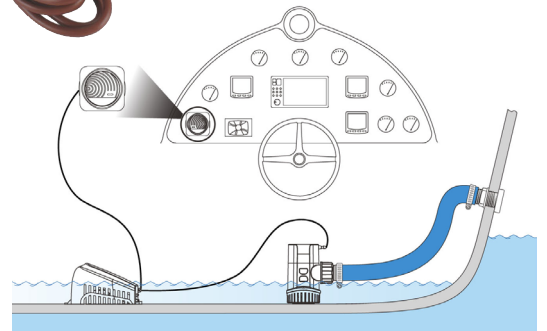
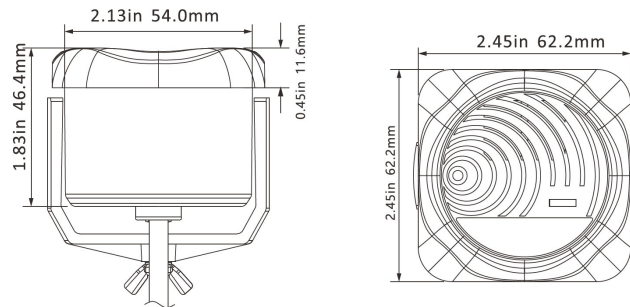
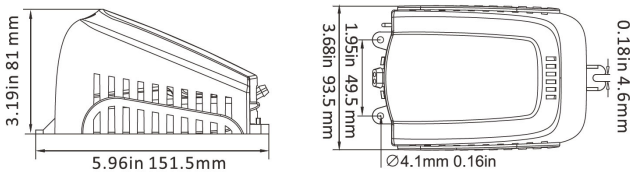


Spare impeller  
Art No. IMPELLER80MM

| Art No.     | Flow Rate      | Volts | Current | Head      | Outlet            | Wire         | Weight  |
|-------------|----------------|-------|---------|-----------|-------------------|--------------|---------|
| SP108000301 | 8 GPM / 30 LPH | 12 V  | 10 A    | 3 m / 10' | 13 mm / 1/2" FNPT | 18 AWG x 1 m | 2.48 kg |
| SP208000301 | 8 GPM / 30 LPH | 24 V  | 7 A     | 3 m / 10' | 13 mm / 1/2" FNPT | 18 AWG x 1 m | 2.48 kg |

## HIGH WATER BILGE ALARM

- A safety reminder device integration vision and hearing
- Consists of a float switch and a 95 DB alarm
- Allows an unarmed compartment to be constantly monitored
- Rated to handle pumps up to 20 A at 12 V or 10 A at 24 V
- Turn on when water level higher than 45 - 55 mm (1.77" - 1.97")
- Turn off when water level lower than 20 - 25 mm (0.79" - 0.98")
- The float switch comes with a filter housing to keep debris out



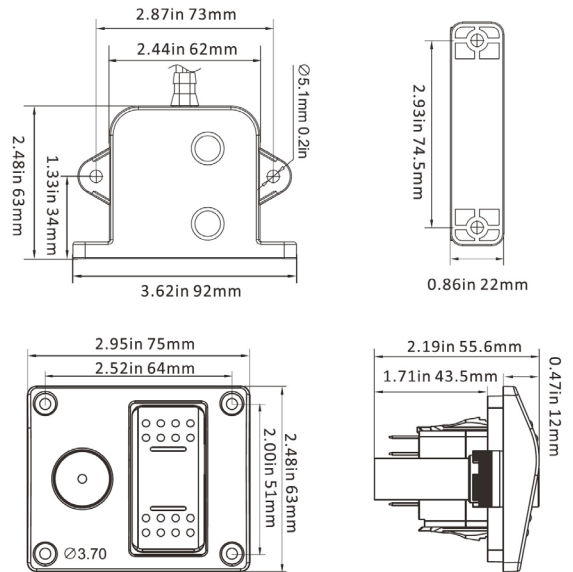
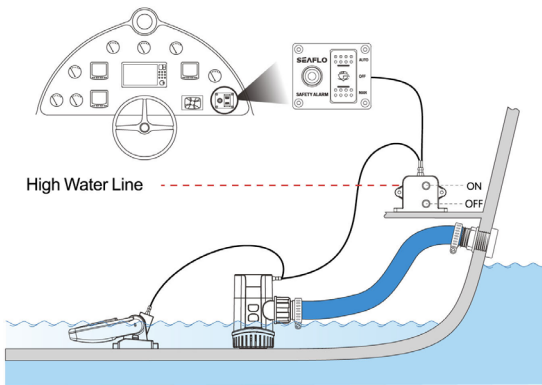
| Art No.  | Voltage | Current      | Alarm Volume | Weight | Wire                    |
|----------|---------|--------------|--------------|--------|-------------------------|
| WAS12002 | 12 V DC | 20 amps. max | ≥95 dB       | 0.3 kg | 16 AWG x 1 m (switch)   |
| WAS21002 | 24 V DC | 10 amps. max | ≥95 dB       | 0.3 kg | 28 AWG x 150 mm (alarm) |



## ALARM CONTROL SYSTEM

The SEAFLO electronic water level alarm control system is an intelligent safety system which incorporates a visual & auditory warning plus switch control. Used in conjunction with a water level electronic switch, when the water level in the vessel is higher than the safety line, the system will emit a red signal light, and at the same time it sounds a  $\geq 85$ dB alarm. When the water level falls back to the safe level, the alarm is silenced & the light turns off.

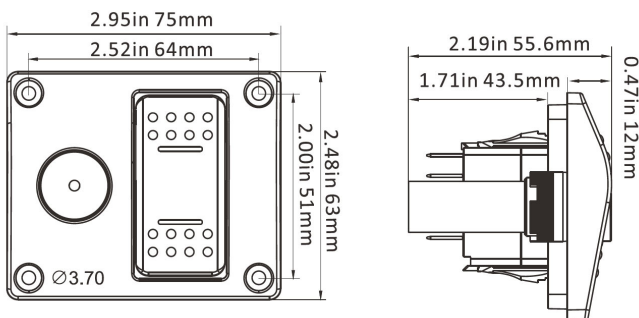
- Detects water & sends a signal to the alarm & control panel switch
- Electric field bilge Switch is rated to handle all bilge pumps up to 20A at 12V & 10A at 24V.
- Switch activates at 41mm fluid level & deactivates at 9.5mm fluid level
- 3 second delay prevents false starts
- Totally sealed fluid detector is never in contact with water, will not corrode & is not affected by oil or debris
- Environmentally safe - no mercury
- No moving parts
- Unique 3-way switch disables alarm while keeping warning LED lit



| Art No.  | Voltage | Max Amps | Alarm Volume | Wire                  |
|----------|---------|----------|--------------|-----------------------|
| WAS12003 | 12 V    | 20 A     | $\geq 85$ dB | 16AWG x 1 m (Switch)  |
| WAS11003 | 24 V    | 10 A     | $\geq 85$ dB | 28AWG x 15 cm (Alarm) |

## ALARM SWITCH PANEL ONLY

- Ideal for use with the Seaflo electric field bilge switch
- Precise operation ensures proper bilge pumping & provides peace of mind
- Controls any pump equipped with an automatic float switch
- Unique 3-way switch disables alarm while keeping warning LED lit
- Three-way rocker switch allows alarm to be auto, turned off or manual (AUTO-OFF-MAN)
- Easy to install



| Art No. | Voltage | Max Amps | Alarm Volume | Wire                  |
|---------|---------|----------|--------------|-----------------------|
| ASP101  | 12 V    | 20 A     | $\geq 85$ dB | 16 AWG x 1 m (Switch) |
| ASP201  | 24 V    | 10 A     | $\geq 85$ dB | 16 AWG x 1 m (Switch) |

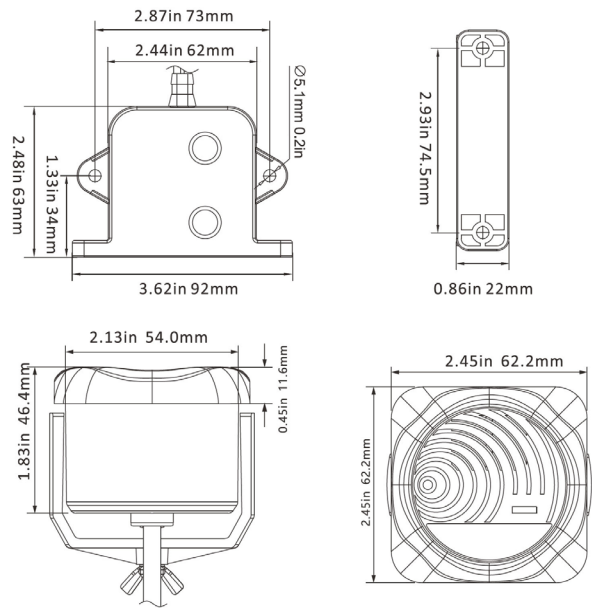
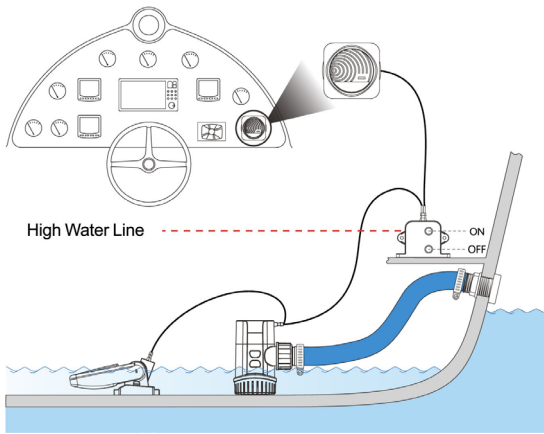




## WATER LEVEL ALARM SYSTEM

The SEAFLO electronic water level alarm control system is an intelligent safety system which incorporates a visual & auditory warning plus switch control. Used in conjunction with a water level electronic switch, when the water level in the vessel is higher than the safety line, the system will emit a red signal light, and at the same time it sounds a  $\geq 85$ DB alarm. When the water level falls back to the safe level, the alarm is silenced & the light turns off.

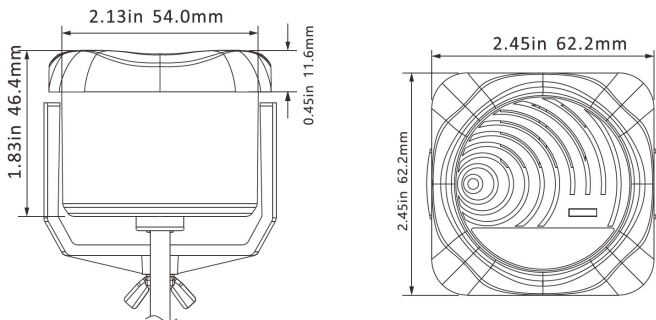
- Detects water & sends a signal to the alarm & control panel switch
- Electric field bilge Switch is rated to handle all bilge pumps up to 20A at 12V & 10A at 24V.
- Switch activates at 41mm fluid level & deactivates at 9.5mm fluid level
- 3 second delay prevents false starts
- Totally sealed fluid detector is never in contact with water, will not corrode & is not affected by oil or debris
- Environmentally safe - no mercury
- No moving parts
- Unique 3-way switch disables alarm while keeping warning LED lit



| Art No.  | Voltage | Max Amps | Alarm Volume | Wire                  |
|----------|---------|----------|--------------|-----------------------|
| WAS12001 | 12 V    | 20 A     | $\geq 95$ dB | 18AWG x 1 m (Switch)  |
| WAS11001 | 24 V    | 10 A     | $\geq 95$ dB | 28AWG x 15 cm (Alarm) |

## WATER ALARM ONLY

- Dash mounted audio & visual alarm unit
- Loud  $\geq 95$ DB alarm
- Integral indicator light
- Allows a remote compartment to be constantly monitored



| Art No. | Voltage | Max Amps | Alarm Volume | Wire           |
|---------|---------|----------|--------------|----------------|
| WA101   | 12 V    | 20 A     | $\geq 95$ dB | 28 AWG x 15 cm |
| WA201   | 24 V    | 10 A     | $\geq 95$ dB | 28 AWG x 15 cm |



## LIVEWELL/BAITWELL PUMPS

- Discharge nozzle and pump housing can both be rotated 360° for optimal installation
- Dual port fitting for optional washdown pump usage
- Anti-airlock protection
- Includes removable discharge straight and elbow fittings
- Quick one-hand "push button" motor cartridge removal system
- 2 Year Warranty

Included



Standard Straight Fitting  
1" (25 mm)  
1 1/8" (29 mm)



Elbow Fitting  
1 1/8" (29 mm)



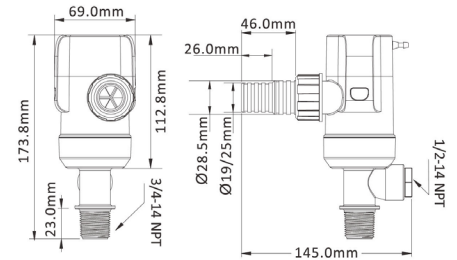
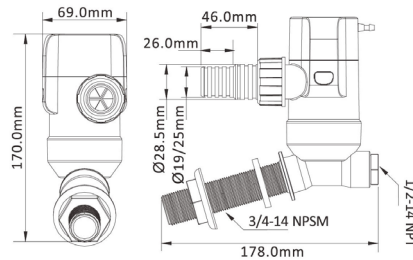
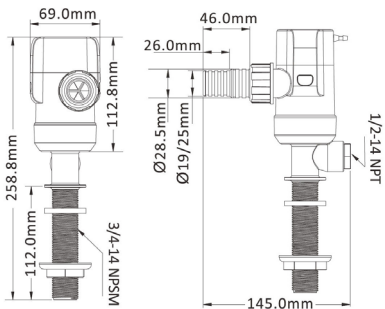
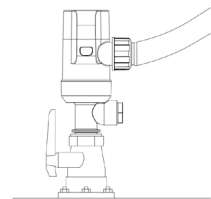
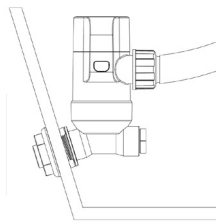
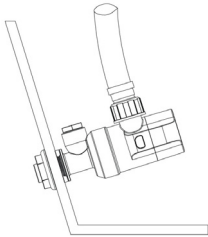
13C Series



13E Series



13D Series



| Art No.     | Flow Rate           | Volts | Current | Head      | Outlet                        | Wire        | Weight  |
|-------------|---------------------|-------|---------|-----------|-------------------------------|-------------|---------|
| BP1G80013C  | 800 GPH / 3028 LPH  | 12 V  | 3.5 A   | 3 m / 9'  | 19 mm / 3/4" & 29 mm / 1-1/8" | 18 AWG x 1m | 0.55 kg |
| BP2G80013C  | 800 GPH / 3028 LPH  | 24 V  | 2.0 A   | 3 m / 9'  | 19 mm / 3/4" & 29 mm / 1-1/8" | 18 AWG x 1m | 0.55 kg |
| BP1G110013C | 1100 GPH / 4164 LPH | 12 V  | 4.0 A   | 4 m / 12' | 25 mm / 1" & 29 mm / 1-1/8"   | 18 AWG x 1m | 0.55 kg |
| BP2G110013C | 1100 GPH / 4164 LPH | 24 V  | 2.5 A   | 4 m / 12' | 25 mm / 1" & 29 mm / 1-1/8"   | 18 AWG x 1m | 0.55 kg |
| BP1G80013E  | 800 GPH / 3028 LPH  | 12 V  | 3.5 A   | 3 m / 9'  | 19 mm / 3/4" & 29 mm / 1-1/8" | 18 AWG x 1m | 0.55 kg |
| BP2G80013E  | 800 GPH / 3028 LPH  | 24 V  | 3.0 A   | 3 m / 9'  | 19 mm / 3/4" & 29 mm / 1-1/8" | 18 AWG x 1m | 0.55 kg |
| BP1G110013E | 1100 GPH / 4164 LPH | 12 V  | 4.0 A   | 4 m / 12' | 25 mm / 1" & 29 mm / 1-1/8"   | 18 AWG x 1m | 0.55 kg |
| BP2G110013E | 1100 GPH / 4164 LPH | 24 V  | 2.5 A   | 4 m / 12' | 25 mm / 1" & 29 mm / 1-1/8"   | 18 AWG x 1m | 0.55 kg |
| BP1G80013D  | 800 GPH / 3028 LPH  | 12 V  | 3.0 A   | 3 m / 9'  | 19 mm / 3/4" & 29 mm / 1-1/8" | 18 AWG x 1m | 0.50 kg |
| BP2G80013D  | 800 GPH / 3028 LPH  | 24 V  | 1.6 A   | 3 m / 9'  | 19 mm / 3/4" & 29 mm / 1-1/8" | 18 AWG x 1m | 0.50 kg |
| BP1G110013D | 1100 GPH / 4164 LPH | 12 V  | 3.5 A   | 4 m / 12' | 25 mm / 1" & 29 mm / 1-1/8"   | 18 AWG x 1m | 0.50 kg |
| BP2G110013D | 1100 GPH / 4164 LPH | 24 V  | 1.8 A   | 4 m / 12' | 25 mm / 1" & 29 mm / 1-1/8"   | 18 AWG x 1m | 0.50 kg |



## PORTABLE AERATOR KITS

- Aerates from 5 to 30 gallons (19 to 113Ltr) of water
- Suction feet attach easily to any non-porous surface
- 09 Series – 240mm long spray tube can be custom cut to fit into any container
- 10 Series – 160mm long spray tube, 350mm hosepipe can be custom cut to fit into any container
- Fully adjustable spray head increases or reduces flow of water
- Foam filtration system keeps water sparkling clean
- Quiet operation
- Kit also includes battery clips for easy attachment to a 12V battery
- Entirely submersible

- Snap-off strainer base for easy maintenance
- Compact, efficient, long-life motor
- Run dry capable for normal workloads
- Stainless steel shaft
- Exclusive moisture tight seals
- Marine grade blocked wiring
- 43°C (110°F) temperature limit
- Meets or exceeds ABYC, SAE and ISO standards
- NMMA listed component
- 2 Year Warranty

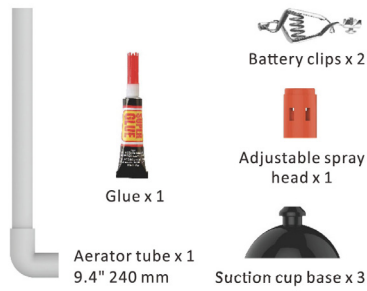
**09 Series**



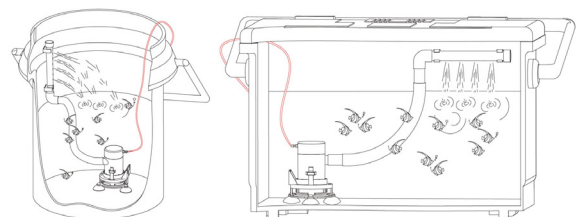
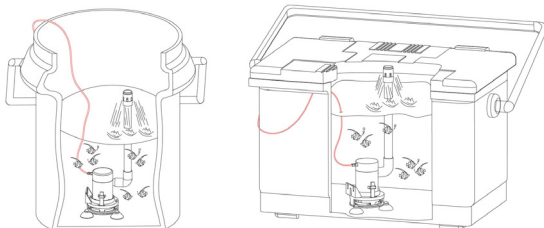
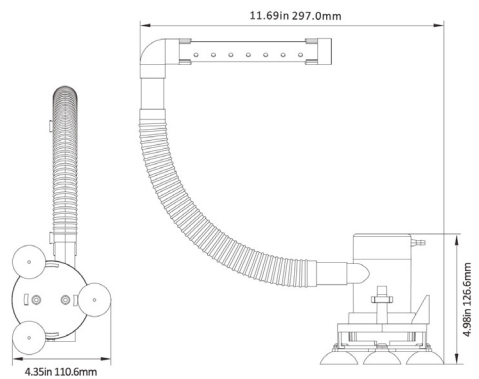
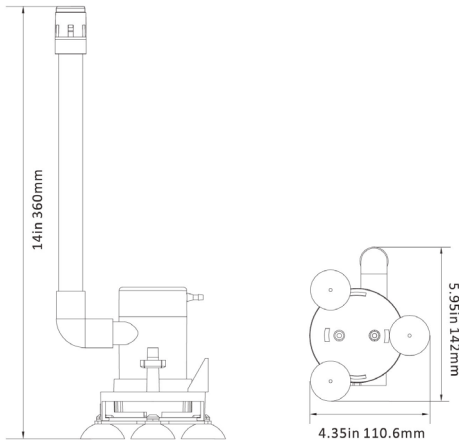
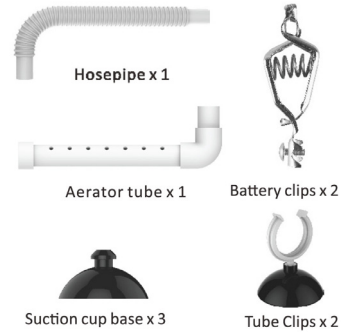
**10 Series**



**Standard Accessories**



**Standard Accessories**

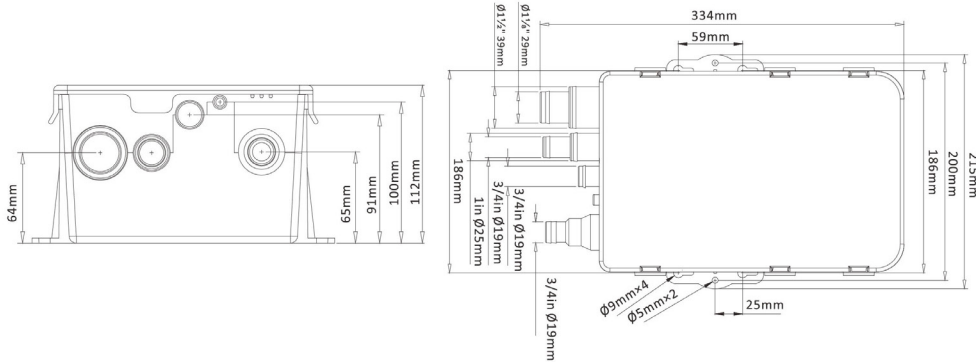


| Art No.   | Flow Rate          | Volts | Current | Head      | Outlet       | Wire         | Weight  |
|-----------|--------------------|-------|---------|-----------|--------------|--------------|---------|
| BP1G35009 | 350 GPH / 1325 LPH | 12 V  | 1.0 A   | 3 m / 10' | 19 mm / 3/4" | 18 AWG x 1 m | 0.32 kg |
| BP1G35010 | 350 GPH / 1325 LPH | 12 V  | 1.0 A   | 3 m / 10' | 19 mm / 3/4" | 18 AWG x 1 m | 0.32 kg |



## SHOWER SUMP PUMP SYSTEM

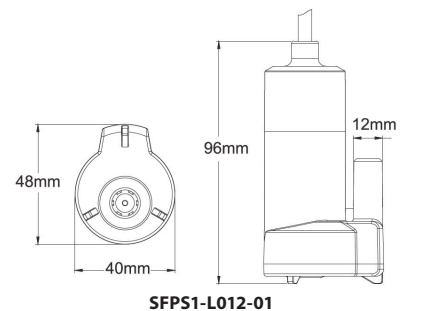
- Contains All-in one pump & switch – turns on when water level rises & shuts off when water is removed
- Check valve on outlet to prevent water backflow
- Multiple inlet ports for versatile usage – 19mm, 19/25mm, 29/38mm
- Handles wastewater from more than one source
- Removable mesh filter allows easy cleaning
- Clear screw-down cover
- Integral vent
- Ignition protected
- Easy installation
- 2 Year Warranty



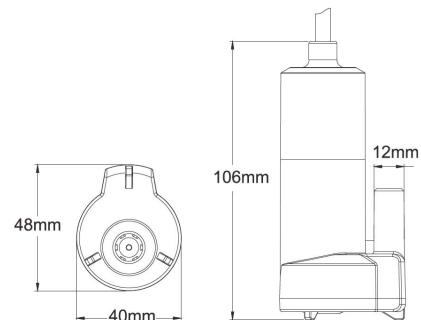
| Art No.   | Flow Rate          | Volts | Current | Head       | Outlet       | Wire         | Weight  |
|-----------|--------------------|-------|---------|------------|--------------|--------------|---------|
| BP1G60007 | 600 GPH / 2271 LPH | 12 V  | 2.5 A   | 2.5 m / 8' | 19 mm / 3/4" | 18 AWG x 1 m | 1.17 kg |
| BP2G60007 | 600 GPH / 2271 LPH | 24 V  | 1.5 A   | 2.5 m / 8' | 19 mm / 3/4" | 18 AWG x 1 m | 1.17 kg |
| BP1G75007 | 750 GPH / 2839 LPH | 12 V  | 3.0 A   | 3 m / 10'  | 19 mm / 3/4" | 18 AWG x 1 m | 1.17 kg |
| BP2G75007 | 750 GPH / 2839 LPH | 24 V  | 1.6 A   | 3 m / 10'  | 19 mm / 3/4" | 18 AWG x 1 m | 1.17 kg |

## SUBMERSIBLE PUMP

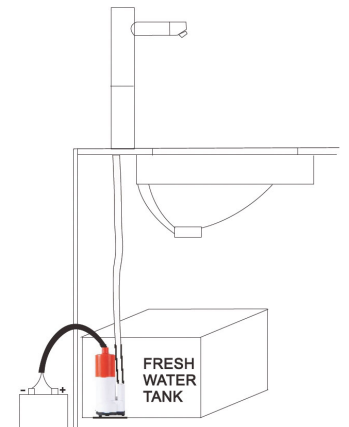
- Offers up to 30 minutes continuous operation
- Compact, efficient, long-life motor
- Completely submersible
- Silent and vibration-free operation
- Made from food grade materials
- Dry sealed with permanent lubrication
- Delivery height up to 6m
- 43°C (110°F) temperature limit
- 2 Year Warranty



SFPS1-L012-01



SFPS1-L016-01



| Art No.   | Flow Rate        | Volts | Pressure | Current | Head        | Outlet       | Wire | Weight  |
|-----------|------------------|-------|----------|---------|-------------|--------------|------|---------|
| SP1L01201 | 12 LPM / 3.2 GPM | 12 V  | 0.6 bar  | 2.0 A   | 6 m / 19.7' | 13 mm / 1/2" | 1 m  | 0.16 kg |
| SP1L01601 | 16 LPM / 4.2 GPM | 12 V  | 0.6 bar  | 4.0 A   | 6 m / 19.7' | 13 mm / 1/2" | 1 m  | 0.24 kg |



## SUBMERSIBLE AND INLINE PUMPS

### 200 GPH MODEL

- Pumps fresh & sea water up to 80°C
- Easy installation or can be used as a portable pump
- Able to run approx. 20 minutes
- Long life, quiet performance motor
- Made from food grade materials
- Removable strainer – converts from submersible use to inline
- 2 Year Warranty

### 280 GPH & 500 GPH MODELS

- Pumps fresh & sea water up to 80°C and diesel up to 40°C
- Version with 5m leads with crocodile clips for portability
- Easy installation or can be used as a portable pump
- Able to run approx. 20 minutes
- Long life, quiet performance motor
- Made from food grade materials
- Removable strainer – converts from submersible use to inline
- 2 Year Warranty



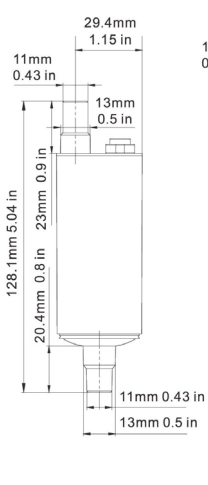
200 GPH



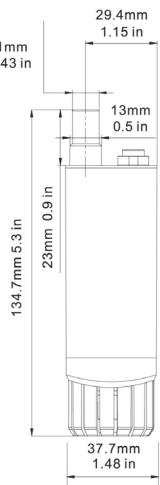
280 GPH / 500 GPH



Can be split to use



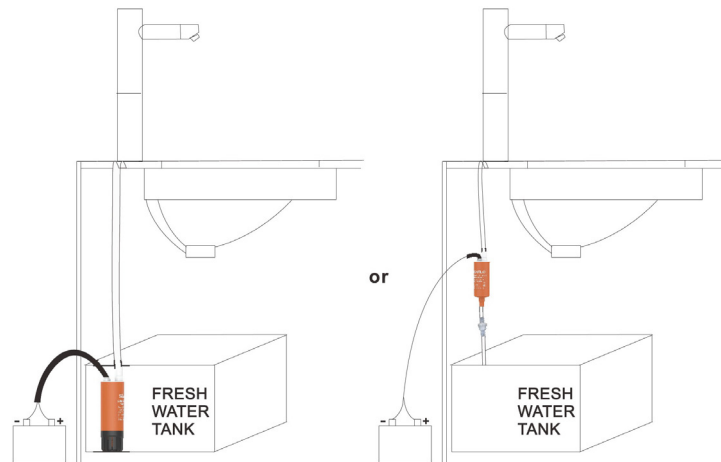
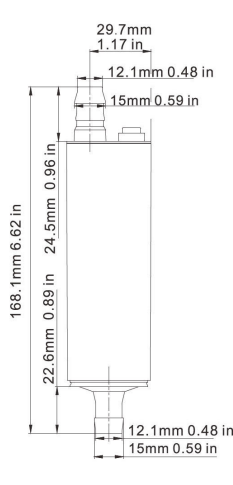
200 GPH



280 GPH



500 GPH

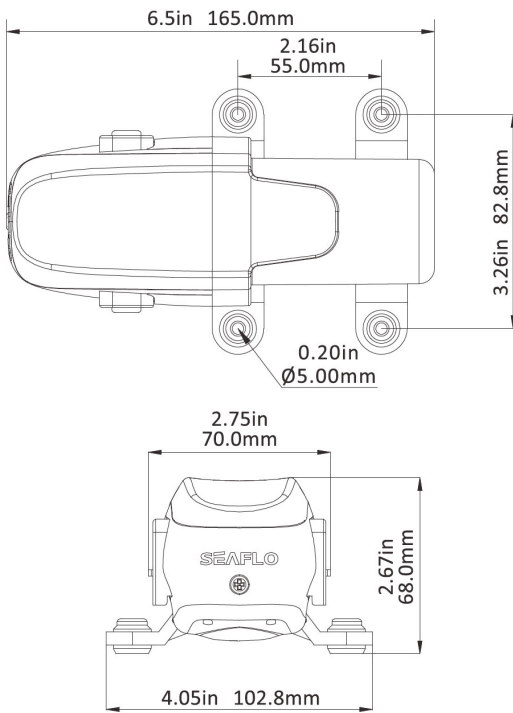


| Art No.    | Flow Rate          | Volts | Max Draw | Fuse  | Head        | Outlet       | Wire Lead   |
|------------|--------------------|-------|----------|-------|-------------|--------------|-------------|
| SP1G20003B | 200 GPH / 757 LPH  | 12 V  | 4.5 A    | 7.5 A | 5 m / 16.4' | 13 mm / 1/2" | 1 m         |
| SP1G28002A | 280 GPH / 1059 LPH | 12 V  | 4.5 A    | 7.5 A | 6 m / 19.7' | 13 mm / 1/2" | 5 m + clips |
| SP1G28002B | 280 GPH / 1059 LPH | 12 V  | 4.5 A    | 7.5 A | 6 m / 19.7' | 13 mm / 1/2" | 1 m         |
| SP1G50002A | 500 GPH / 1892 LPH | 12 V  | 4.5 A    | 7.5 A | 7 m / 23'   | 19 mm / 3/4" | 5 m + clips |
| SP1G50002B | 500 GPH / 1892 LPH | 12 V  | 4.5 A    | 7.5 A | 7 m / 23'   | 19 mm / 3/4" | 1 m         |



## WATER PRESSURE PUMP – 23A SERIES

- 2 Chamber diaphragm pump
- On-demand long life pressure switch
- Self-priming
- Capable of being run dry
- Multiple connector options
- Bypass technology reduces cycling
- Rubber feet for vibration & noise reduction
- Industry standard mount pattern
- Compact housing
- Quiet running
- Ignition protected
- Marine grade blocked wiring
- Waterproof grade IP54 with extra cover
- 60°C (140°F) temperature limit
- Shut-off Pressure 35 PSI: 25 PSI ±5 PSI (±0.3 bar)
- Shut-off Pressure 40 PSI: 30 PSI ±5 PSI (±0.3 bar)
- Shut-off Pressure 70 PSI: 56 PSI ±5 PSI (±0.3 bar)
- Valves: EPDM
- Diaphragm: Santoprene
- Inlet/Outlet Ports: 5/8" quick connector
- Leads: 18AWG x 35cm
- Weight: 0.7kg
- CE, RoHS
- 2 Year warranty



**Standard Accessories**  
23F001\*2 (5/8" x 3/8")  
included

**CAN MATCH MULTIPLE 1/4" QUICK ATTACH FITTINGS TO MEET DIFFERENT REQUIREMENTS**



23F002  
(5/8" x 3/8")



23F003  
(5/8" x 1/4")



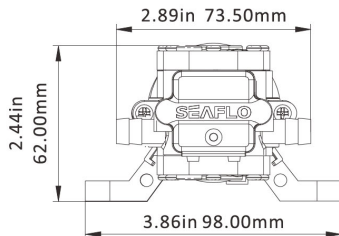
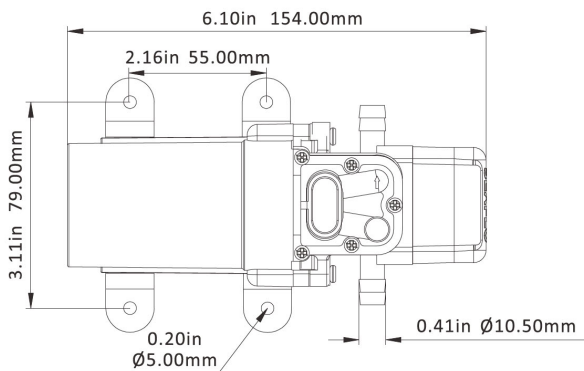
**OPTIONAL ACCESSORIES** see page 168

| Art No.      | Open Flow<br>GPM / LPM | Shut-off Pressure<br>PSI / BAR | Volts | Max Draw | Control Type    | Priming Capabilities |
|--------------|------------------------|--------------------------------|-------|----------|-----------------|----------------------|
| DP100507023A | 0.5 / 1.9              | 70 / 4.8                       | 12 V  | 1.8 A    | Switch & Bypass | 0.6 m / 2'           |
| DP200507023A | 0.5 / 1.9              | 70 / 4.8                       | 24 V  | 1.0 A    | Switch & Bypass | 0.6 m / 2'           |
| DP100707023A | 0.7 / 2.6              | 70 / 4.8                       | 12 V  | 2.5 A    | Switch & Bypass | 0.6 m / 2'           |
| DP200707023A | 0.7 / 2.6              | 70 / 4.8                       | 24 V  | 1.2 A    | Switch & Bypass | 0.6 m / 2'           |
| DP101004023A | 1.0 / 3.8              | 40 / 2.8                       | 12 V  | 3.8 A    | Switch & Bypass | 1.5 m / 5'           |
| DP201004023A | 1.0 / 3.8              | 40 / 2.8                       | 24 V  | 2.0 A    | Switch & Bypass | 1.5 m / 5'           |
| DP101204023A | 1.2 / 4.3              | 40 / 2.8                       | 12 V  | 4.2 A    | Switch & Bypass | 1.5 m / 5'           |
| DP201204023A | 1.2 / 4.3              | 40 / 2.8                       | 24 V  | 2.2 A    | Switch & Bypass | 1.5 m / 5'           |
| DP101504023A | 1.5 / 5.6              | 40 / 2.8                       | 12 V  | 4.5 A    | Switch & Bypass | 1.5 m / 5'           |
| DP201504023A | 1.5 / 5.6              | 40 / 2.8                       | 24 V  | 2.5 A    | Switch & Bypass | 1.5 m / 5'           |



## WATER PRESSURE PUMP – 21 SERIES

- Capable of supplying 1-2 fixtures
- 2-Chamber diaphragm pump
- On-demand long life pressure switch
- Adjustable pressure setting
- Self-priming
- Capable of being run dry
- Rubber feet for vibration & noise reduction
- Industry standard mount pattern
- Compact design
- Quiet operation
- Ignition protected
- Marine grade blocked wiring
- 43°C (110°F) temperature limit
- Shut-off Pressure 35 PSI: 25 PSI ±5 PSI (±0.3 bar)
- Shut-off Pressure 40 PSI: 30 PSI ±5 PSI (±0.3 bar)
- Shut-off Pressure 70 PSI: 56 PSI ±5 PSI (±0.3 bar)
- Valves: EPDM
- Diaphragm: Santoprene
- Inlet/Outlet Ports: 10mm / 3/8" hose barbs
- Leads: 18AWG x 35cm
- Weight: 0.6kg
- Meets or exceeds RoHS, SGS and ISO standards
- 2 Year warranty



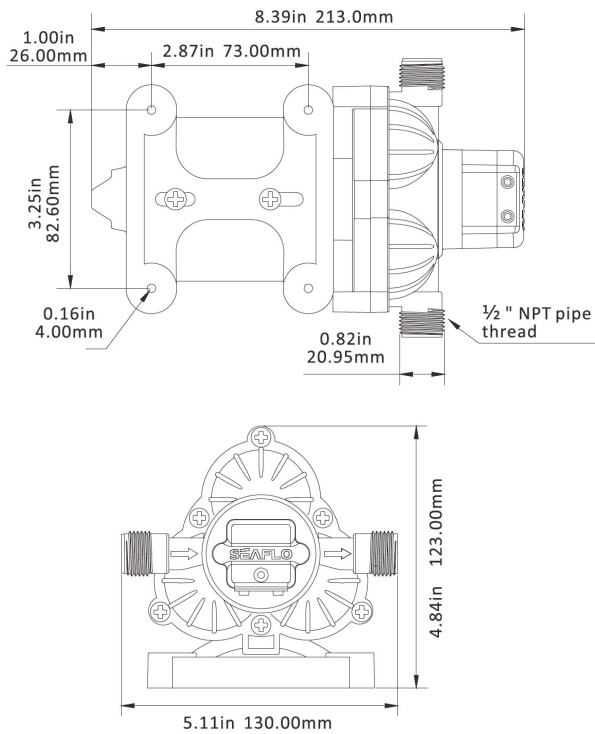
| Art No.     | Open Flow<br>GPM / LPM | Shut-off Pressure<br>PSI / BAR | Volts | Max Draw | Control Type | Priming Capabilities |
|-------------|------------------------|--------------------------------|-------|----------|--------------|----------------------|
| DP101004021 | 1.0 / 3.8              | 40 / 2.8                       | 12 V  | 4.0 A    | Switch       | 1.2 m / 4'           |
| DP201004021 | 1.0 / 3.8              | 40 / 2.8                       | 24 V  | 2.0 A    | Switch       | 1.2 m / 4'           |
| DP101107021 | 1.1 / 4.0              | 70 / 4.8                       | 12 V  | 4.0 A    | Switch       | 1.2 m / 4'           |
| DP101203521 | 1.2 / 4.3              | 35 / 2.4                       | 12 V  | 4.0 A    | Switch       | 1.2 m / 4'           |
| DP201203521 | 1.2 / 4.3              | 35 / 2.4                       | 24 V  | 2.0 A    | Switch       | 1.2 m / 4'           |

See page 168 for hose connectors



## WATER PRESSURE PUMP – 33 SERIES

- Capable of supplying 2-3 fixtures
- 3-chamber diaphragm pump
- On-demand long life pressure switch
- Adjustable pressure switch
- Self-priming
- Capable of being run dry
- Rubber mounting base for vibration & noise reduction
- Industry standard mount pattern
- Quiet operation
- Thermal overload protected with Automatic restart feature
- Marine grade blocked wiring
- 60°C (140°F) temperature limit
- Shut-off Pressure 45 PSI: 35 PSI ±5 PSI (±0.3 bar)
- Valves: EPDM
- Diaphragm: Santoprene
- Inlet/Outlet Ports: 1/2"-14 MNPT
- Leads: 16AWG x 11.4cm
- Weight: 1.8kg
- Meets or exceeds RoHS, SGS and ISO standards
- 2 Year warranty



Standard accessories included



| Art No.     | Open Flow<br>GPM / LPM | Shut-off Pressure<br>PSI / BAR | Volts | Max Draw | Control Type | Priming Capabilities |
|-------------|------------------------|--------------------------------|-------|----------|--------------|----------------------|
| DP102804533 | 2.8 / 10.6             | 45 / 3.1                       | 12 V  | 5.61 A   | Switch       | 1.8 m / 6'           |
| DP202804533 | 2.8 / 10.6             | 45 / 3.1                       | 24 V  | 3.02 A   | Switch       | 1.8 m / 6'           |
| DP103004533 | 3.0 / 11.3             | 45 / 3.1                       | 12 V  | 6.74 A   | Switch       | 1.8 m / 6'           |
| DP203004533 | 3.0 / 11.3             | 45 / 3.1                       | 24 V  | 3.40 A   | Switch       | 1.8 m / 6'           |

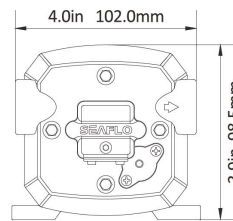
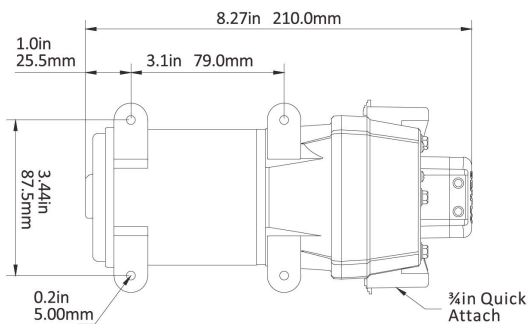




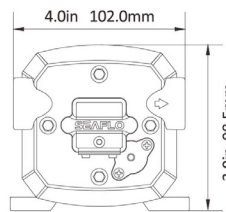
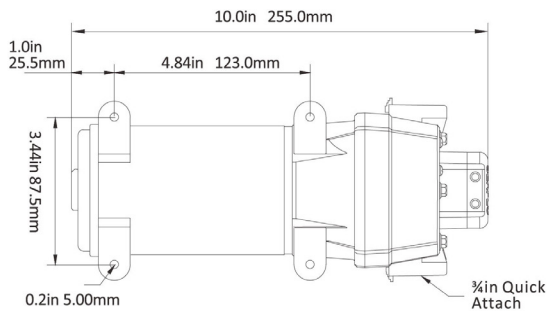
## WATER PRESSURE PUMP – 41 SERIES

- Capable of supplying up to 3 fixtures (2.7/3.3 GPM models) or up to 4 fixtures (4.5 GPM model)
- 4-chamber diaphragm pump
- Can be used for fresh & salt water
- Internal bypass technology reduces cycling
- Ideal in water systems with no accumulator tank
- On-demand long life pressure switch
- Adjustable pressure switch
- Self-priming
- Capable of being run dry
- Rubber mounting feet for vibration & noise reduction
- Industry standard mount pattern
- Quiet operation

- Thermal overload protected
- Marine grade blocked wiring
- 60°C (140°F) temperature limit
- Shut-off Pressure 17 PSI: 9 PSI ±5 PSI (±0.3 bar)
- Shut-off Pressure 35 PSI: 25 PSI ±5 PSI (±0.3 bar)
- Shut-off Pressure 40 PSI: 30 PSI ±5 PSI (±0.3 bar)
- Valves: EPDM
- Diaphragm: Santoprene
- Inlet/Outlet Ports: 3/4" Quick-Connect fittings
- Leads: 16AWG x 11.4cm
- Weight: 1.8kg (2.7/3.3 GPM), 2.3kg (4.5 GPM)
- Meets or exceeds RoHS, SGS and ISO standards
- 2 Year warranty



**2.7 GPH / 3.3 GPH**



**4.5 GPH**

### Standard accessories included



41F001



41F003



41F004



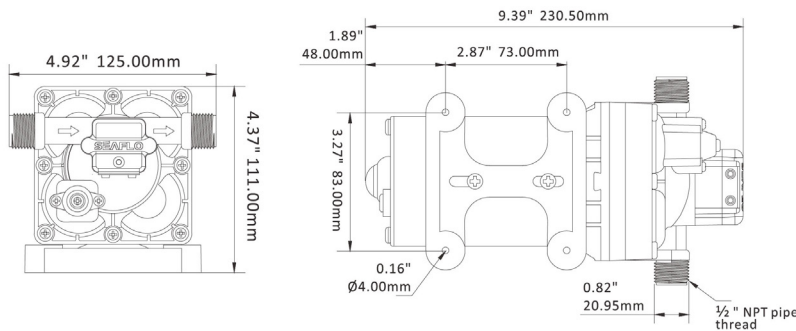
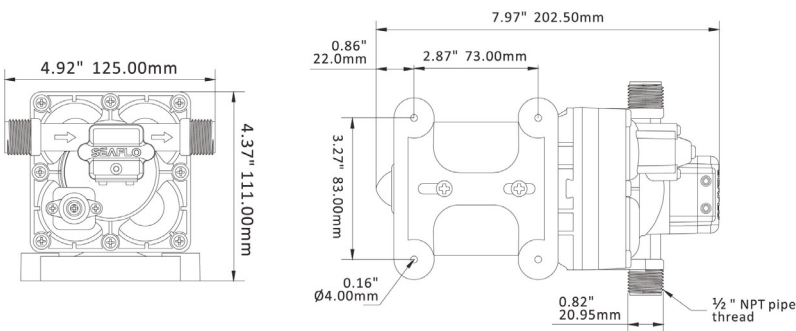
41S03

| Art No.     | Open Flow<br>GPM / LPM | Shut-off Pressure<br>PSI / BAR | Volts | Max Draw | Control Type    | Priming Capabilities |
|-------------|------------------------|--------------------------------|-------|----------|-----------------|----------------------|
| DP102701741 | 2.7 / 10.0             | 17 / 1.2                       | 12 V  | 4.43 A   | Switch & Bypass | 1.8 m / 6'           |
| DP202701741 | 2.7 / 10.0             | 17 / 1.2                       | 24 V  | 2.34 A   | Switch & Bypass | 1.8 m / 6'           |
| DP103303541 | 3.3 / 12.5             | 35 / 2.4                       | 12 V  | 8.50 A   | Switch & Bypass | 1.8 m / 6'           |
| DP203303541 | 3.3 / 12.5             | 35 / 2.4                       | 24 V  | 4.48 A   | Switch & Bypass | 1.8 m / 6'           |
| DP104504041 | 4.5 / 17.0             | 40 / 2.8                       | 12 V  | 12.13 A  | Switch & Bypass | 1.8 m / 6'           |
| DP204504041 | 4.5 / 17.0             | 40 / 2.8                       | 24 V  | 6.07 A   | Switch & Bypass | 1.8 m / 6'           |



## WATER PRESSURE PUMP – 42 SERIES

- 4-chamber diaphragm pump
- Internal bypass technology reduces cycling
- On-demand long life pressure switch
- Adjustable pressure switch
- Self-priming
- Capable of being run dry
- Rubber mounting base for vibration & noise reduction
- Industry standard mount pattern
- Quiet operation
- Thermal overload protected
- Marine grade blocked wiring
- 60°C (140°F) temperature limit
- Shut-off Pressure 55 PSI: 41 PSI ±5 PSI (±0.3 bar)
- Valves: EPDM
- Diaphragm: Santoprene
- Inlet/Outlet Ports: 1/2"-14 MNPT
- Leads: 16AWG x 24cm
- Weight: 1.9kg (3.0 GPM), 2.7kg (4.0/5.0 GPM)
- Meets or exceeds RoHS, SGS and ISO standards
- 2 Year warranty



### Standard accessories included

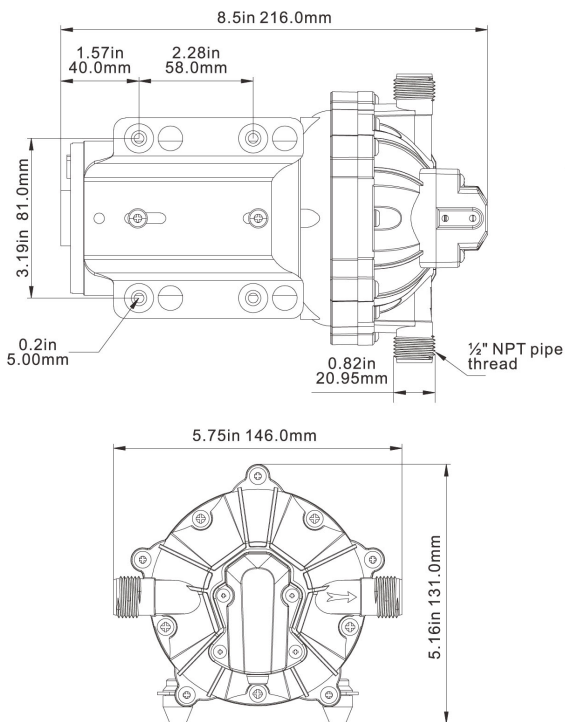


| Art No.     | Open Flow<br>GPM / LPM | Shut-off Pressure<br>PSI / BAR | Volts | Max Draw | Control Type    | Priming Capabilities |
|-------------|------------------------|--------------------------------|-------|----------|-----------------|----------------------|
| DP103005542 | 3.0 / 11.3             | 55 / 3.8                       | 12 V  | 7.0 A    | Switch & Bypass | 1.8 m / 6'           |
| DP203005542 | 3.0 / 11.3             | 55 / 3.8                       | 24 V  | 3.4 A    | Switch & Bypass | 1.8 m / 6'           |
| DP104005542 | 4.0 / 15.0             | 55 / 3.8                       | 12 V  | 13.0 A   | Switch & Bypass | 1.8 m / 6'           |
| DP204005542 | 4.0 / 15.0             | 55 / 3.8                       | 24 V  | 6.0 A    | Switch & Bypass | 1.8 m / 6'           |
| DP105005542 | 5.0 / 18.9             | 55 / 3.8                       | 12 V  | 15.0 A   | Switch & Bypass | 1.8 m / 6'           |
| DP205005542 | 5.0 / 18.9             | 55 / 3.8                       | 24 V  | 7.5 A    | Switch & Bypass | 1.8 m / 6'           |



## WATER PRESSURE PUMP – 51 SERIES

- Can supply up to 4 fixtures
- 5-chamber heavy duty diaphragm pump
- Can be used for fresh & salt water
- Low starting pressure, reduces cycling
- Ideal in water systems with no accumulator tank
- On-demand long life pressure switch
- Precise pressure control and stable performance
- Self-priming
- Capable of being run dry
- Rubber mounting feet for vibration & noise reduction
- Adjustable position mounting feet
- Very quiet operation
- Good heat dissipation
- Good sealing performance, waterproof and dustproof
- Marine grade blocked wiring
- 60°C (140°F) temperature limit
- Shut-off Pressure 60 PSI: 60 PSI ±5 PSI (±0.3 bar)
- Valves: EPDM
- Diaphragm: Santoprene
- Inlet/Outlet Ports: 1/2"-14 MNPT
- Leads: 16AWG x 23cm
- Weight: 2.68kg
- Meets or exceeds RoHS, SGS and ISO standards
- 2 Year warranty



### Standard accessories included

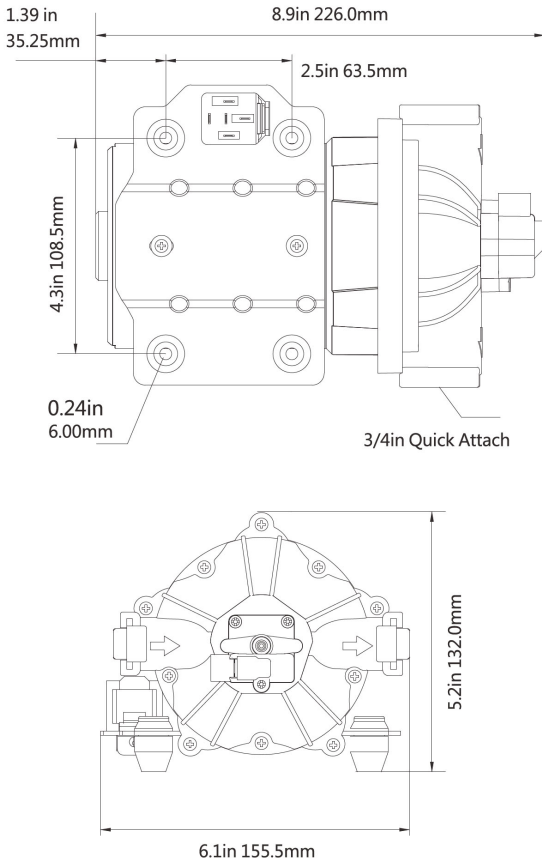


| Art No.     | Open Flow<br>GPM / LPM | Shut-off Pressure<br>PSI / BAR | Volts | Max Draw | Control Type | Priming Capabilities |
|-------------|------------------------|--------------------------------|-------|----------|--------------|----------------------|
| DP104006051 | 4.0 / 15.0             | 60 / 4.2                       | 12 V  | 11.0 A   | Switch       | 1.8 m / 6'           |
| DP204006051 | 4.0 / 15.0             | 60 / 4.2                       | 24 V  | 6.0 A    | Switch       | 1.8 m / 6'           |
| DP105006051 | 5.0 / 18.9             | 60 / 4.2                       | 12 V  | 15.0 A   | Switch       | 1.8 m / 6'           |
| DP205006051 | 5.0 / 18.9             | 60 / 4.2                       | 24 V  | 8.0 A    | Switch       | 1.8 m / 6'           |



## WATER PRESSURE PUMP – 53 SERIES

- Can supply up to 6 fixtures
- 5-chamber heavy duty diaphragm pump
- Can be used for fresh & salt water
- Heavy duty motor and robust construction
- Provides high volume water flow with reduced pump cycling
- Ideal in water systems with no accumulator tank
- On-demand adjustable pressure switch
- Self-priming
- Capable of being run dry
- Rubber mounting feet for vibration & noise reduction
- Industry standard mount pattern
- Quiet operation
- Marine grade blocked wiring
- 60°C (140°F) temperature limit
- Shut-off Pressure 60 PSI: 48 PSI  $\pm$ 5 PSI ( $\pm$ 0.3 bar)
- Valves: EPDM
- Diaphragm: Santoprene
- Inlet/Outlet Ports: Quick attach
- Leads: 16AWG x 23cm
- Weight: 4.31kg
- Meets or exceeds RoHS, SGS and ISO standards
- 2 Year warranty



Standard accessories included



41F001



41F003



41F004



52S01

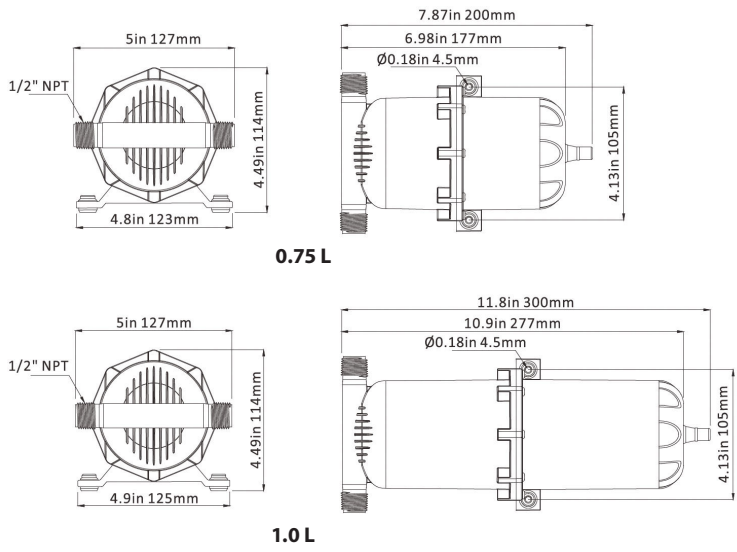
| Art No.     | Open Flow<br>GPM / LPM | Shut-off Pressure<br>PSI / BAR | Volts | Max Draw | Control Type | Priming Capabilities |
|-------------|------------------------|--------------------------------|-------|----------|--------------|----------------------|
| DP107006053 | 7.0 / 26.5             | 60 / 4.1                       | 12 V  | 24.5 A   | Switch       | 1.8 m / 6'           |
| DP207006053 | 7.0 / 26.5             | 60 / 4.1                       | 24 V  | 13.0 A   | Switch       | 1.8 m / 6'           |



**PRESSURISED ACCUMULATOR TANKS**

Accumulator tanks hold a reservoir of air and water downstream from the pump. The air acts as a cushion, absorbing pressure fluctuations and vibrations (which can shorten a pumps life), smoothing the flow and making the system quieter. Accumulators allow the pump to reach shut-off pressure more smoothly which reduces the on/off cycle which gives better control of water delivery and extends the life of the pump.

- Gives smoother flow and quieter water systems
- Internal rubber membrane eliminates maintenance
- Better control of hot water temperatures
- Longer pump life and lower battery drain
- Simply fitted to new or existing systems
- Can be mounted at any angle
- Rubber mounting feet for easy installation
- Screw-on port fittings

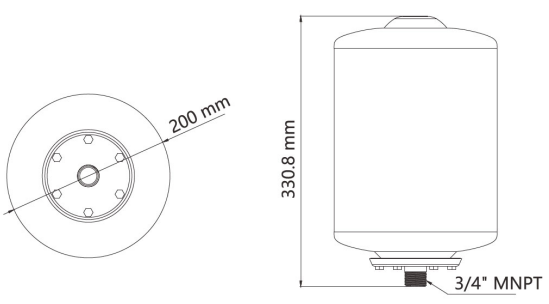


See page 168 for accessories

| Art No.    | Internal Volume | Pre-Charge Pressure<br>PSI / BAR | Max Operating Pressure<br>PSI / BAR | Air Fill Valve                       | Inlet/Outlet<br>Ports | Weight |
|------------|-----------------|----------------------------------|-------------------------------------|--------------------------------------|-----------------------|--------|
| AT07512501 | 0.75 Litre      | 10 / 0.7                         | 125 / 8.6                           | Standard automotive style tyre valve | 1/2" MNPT             | 0.36kg |
| AT10012501 | 1.0 Litre       | 10 / 0.7                         | 125 / 8.6                           | Standard automotive style tyre valve | 1/2" MNPT             | 0.66kg |

**8L WATER ACCUMULATOR TANK**

- Gives smoother flow and quieter water systems
- Prolongs pump's service life
- Protective coating for corrosion resistance
- Can be mounted at any angle
- 3/4" MNPT thread for convenient installation in the water system

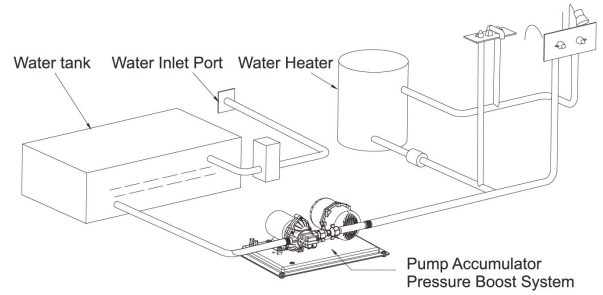


| Art No.    | Internal Volume | Pre-Charge Pressure<br>PSI / BAR | Inlet/Outlet Size | Weight |
|------------|-----------------|----------------------------------|-------------------|--------|
| AT08702101 | 8.0 Litre       | 87 / 8.0                         | 3/4" MNPT         | 2.0kg  |



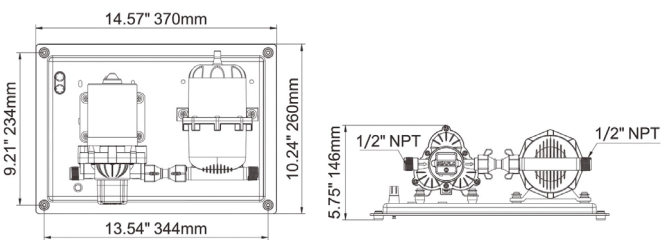
## WATER PRESSURE SYSTEM KITS

Pre-assembled kits, consisting of a pressure pump, strainer and pre-pressurized accumulator tank with quick connect electrical connections, all mounted on a base board. They simplify the installation of a water pressure system for both the professional and amateur installer.



### 33 SERIES PUMP WITH INTEGRATED ACCUMULATOR TANK

- Powerful 3.0 GPM / 11.3 LPM pump – see Page 158 for full specifications
- Compact 0.75L Accumulator tank – see Page 163 for full specifications



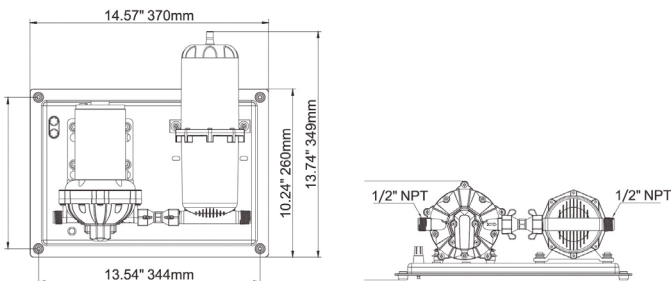
#### Standard accessories



| Art No.       | Open Flow<br>GPM / LPM | Turn-on Pressure<br>PSI / BAR | Shut-off Pressure<br>PSI / BAR | Volts | Max Draw | Control Type | Tank Volume |
|---------------|------------------------|-------------------------------|--------------------------------|-------|----------|--------------|-------------|
| WSK1030045002 | 3.0 / 11.3             | 35 / 2.4                      | 45 / 3.1                       | 12 V  | 11.0 A   | Switch       | 0.75 L      |
| WSK2030045002 | 3.0 / 11.3             | 35 / 2.4                      | 45 / 3.1                       | 24 V  | 5.5 A    | Switch       | 0.75 L      |

### 51 SERIES PUMP WITH INTEGRATED ACCUMULATOR TANK

- Powerful 5.5 GPM / 20.8 LPM pump – see Page 161 for full specifications
- Compact 1.0L Accumulator tank – see Page 163 full specifications



#### Standard accessories



| Art No.       | Open Flow<br>GPM / LPM | Turn-on Pressure<br>PSI / BAR | Shut-off Pressure<br>PSI / BAR | Volts | Max Draw | Control Type | Tank Volume |
|---------------|------------------------|-------------------------------|--------------------------------|-------|----------|--------------|-------------|
| WSK1055060003 | 5.5 / 20.8             | 50 / 3.4                      | 60 / 4.2                       | 12 V  | 18.0 A   | Switch       | 1.0 L       |
| WSK2055060003 | 5.5 / 20.8             | 50 / 3.4                      | 60 / 4.2                       | 24 V  | 9.0 A    | Switch       | 1.0 L       |

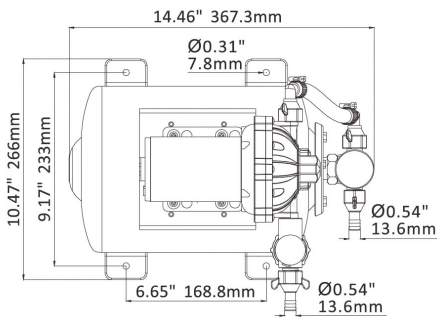
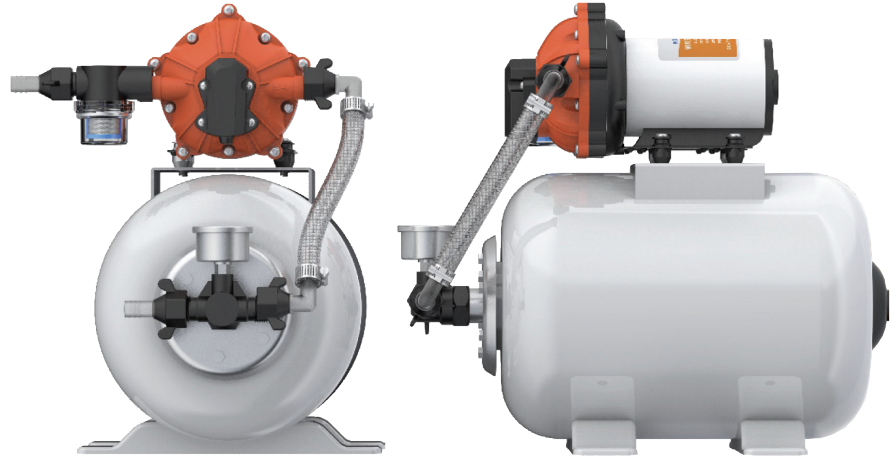
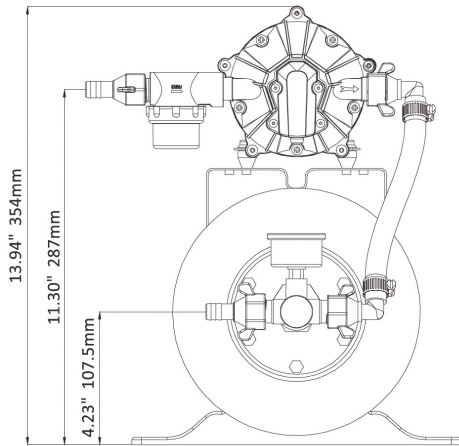
## LUXURY PUMP ACCUMULATOR PRESSURE BOOST SYSTEM

For larger water systems, this pre-assembled kit, simplifies the installation of a water pressure system for both the professional and amateur installer. Consisting of a pressure pump, pressure gauge and water strainer pre-mounted on an accumulator tank.

Powerful SERIES 51 pressure pump (3 flow rate options) – see Page 161 for full specifications

Large capacity 8.0L Accumulator tank – see Page 163 for full specifications

- Smoother flow for a quieter water system
- Can be installed vertically or horizontally
- Maintenance free, potable water quality tank
- Complies with USCG 183.410 and ISO 8846
- Inlet/Outlet Ports: 1/2" – 14 MNPT
- Weight: 5.4kg



### Standard accessories included



51F001 x 2



51F003 x 2



51S01

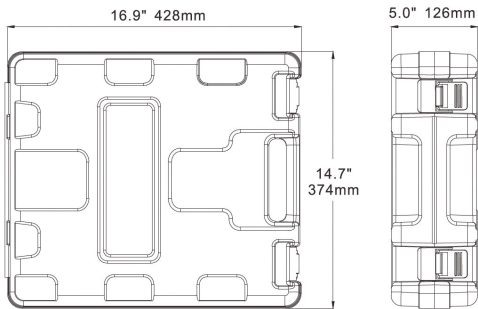


Pressure gauge

| Art No.        | Open Flow<br>GPM / LPM | Turn-on Pressure<br>PSI / BAR | Shut-off Pressure<br>PSI / BAR | Volts | Max<br>Draw | Control Type | Priming Capabilities |
|----------------|------------------------|-------------------------------|--------------------------------|-------|-------------|--------------|----------------------|
| WSK10300600021 | 3.0 / 11.3             | 40 / 2.8                      | 60 / 4.2                       | 12 V  | 10.0 A      | Switch       | 8.0 L                |
| WSK20300600021 | 3.0 / 11.3             | 40 / 2.8                      | 60 / 4.2                       | 24 V  | 5.5 A       | Switch       | 8.0 L                |
| WSK10400600021 | 4.0 / 15.0             | 40 / 2.8                      | 60 / 4.2                       | 12 V  | 13.0 A      | Switch       | 8.0 L                |
| WSK20400600021 | 4.0 / 15.0             | 40 / 2.8                      | 60 / 4.2                       | 24 V  | 7.0 A       | Switch       | 8.0 L                |
| WSK10500600021 | 5.0 / 18.9             | 40 / 2.8                      | 60 / 4.2                       | 12 V  | 17.0 A      | Switch       | 8.0 L                |
| WSK20500600021 | 5.0 / 18.9             | 40 / 2.8                      | 60 / 4.2                       | 24 V  | 9.0 A       | Switch       | 8.0 L                |

## PORTABLE WASHDOWN PUMP KIT – 41 SERIES

- Powerful, high-pressure, 4.5 GPM / 17.0 LPM pump – see Page 159 for full specifications
- 6.5m / 20' UV-protected coiled hose
- 2 m Inlet hose
- Adjustable trigger spray gun
- 2.4 m wiring harness with cigarette lighter plug
- All required connectors
- Tough plastic storage/carry case



### Standard accessories included



| Art No.     | Open Flow GPM / LPM | Turn-on Pressure PSI / BAR | Shut-off Pressure PSI / BAR | Volts  | Max Draw |
|-------------|---------------------|----------------------------|-----------------------------|--------|----------|
| WP104507041 | 4.5 / 17.0          | 70 / 4.8                   | 12 V                        | 17.0 A | 11.0 A   |

## 6.5 M HOSECOIL WASH DOWN SYSTEM

- Consists of UV-protected 20' (6.5 m) Coiled 1/3" I.D. Hose, spray nozzle with adjustable tip and contoured grip and bronze fittings.
- Coil hose eliminates any kinks that may arise from normal water hose.
- Designed to facilitate easy, neat, safe storage.
- Great for large cockpits, dockside installation and even home cleaning use.



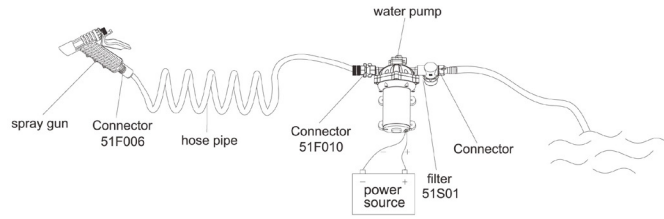
| Art No.  | Spray Gun                               | Contoured Grip   | Adaptor  |
|----------|---|--|--|
| HW206001 | Connector : 5/8"<br>Pressure: 0 - 8 Bar | Connector : 5/8" qa *5/8" QA<br>Diameter: ID 1/3"<br>Length: 20" | Connector: 3/4" FNPT / 1/2" FNPT /<br>1" FNPT *5/8" QA |





WASHDOWN PUMP KITS

Powerful, reliable pumps which automatically turn on when the trigger is squeezed. Suitable for use with fresh or salt water, their high pressure will get rid of dirt & debris from decks, anchor wells, fish boxes, dinghies etc



WASHDOWN PUMP KIT – 33 SERIES

- Powerful, high-pressure, 3.0 GPM / 11.3 LPM pump – see Page 158 for full specifications
- 6.5 m / 20' UV-protected coiled hose
- Trigger spray gun with Quick Connect
- 50 mesh inlet strainer
- Quick hose disconnect fitting
- 1/2" barbed fittings



Standard accessories included



| Art No.     | Open Flow GPM / LPM | Shut-off Pressure PSI / BAR | Volts | Max Draw | Control Type | Hose              |
|-------------|---------------------|-----------------------------|-------|----------|--------------|-------------------|
| WP103007033 | 3.0 / 11.0          | 70 / 4.8                    | 12 V  | 18.0 A   | Demand       | Yes – 6.5 m / 20' |
| WP203007033 | 3.0 / 11.0          | 70 / 4.8                    | 24 V  | 9.0 A    | Demand       | Yes – 6.5 m / 20' |

WASHDOWN PUMP KIT – 51 SERIES AVAILABLE WITH OR WITHOUT COILED HOSE

- Powerful, high-pressure, 5.2 GPM / 19.7 LPM pump – see Page 161 for full specifications
- 6.5 m / 20' UV-protected coiled hose (optional)
- Trigger spray gun with Quick Connect
- 50 mesh inlet strainer
- Quick hose disconnect fitting
- 1/2" barbed fittings

Standard accessories included (hose optional)



| Art No.      | Open Flow GPM / LPM | Shut-off Pressure PSI / BAR | Volts | Max Draw | Control Type | Hose              |
|--------------|---------------------|-----------------------------|-------|----------|--------------|-------------------|
| WP105207051B | 5.2 / 19.7          | 70 / 4.8                    | 12 V  | 18.0 A   | Demand       | No                |
| WP205207051B | 5.2 / 19.7          | 70 / 4.8                    | 24 V  | 9.5 A    | Demand       | No                |
| WP105207051A | 5.2 / 19.7          | 70 / 4.8                    | 12 V  | 18.0 A   | Demand       | Yes – 6.5 m / 20' |
| WP205207051A | 5.2 / 19.7          | 70 / 4.8                    | 24 V  | 9.5 A    | Demand       | Yes – 6.5 m / 20' |



## GENUINE PARTS AND ACCESSORIES

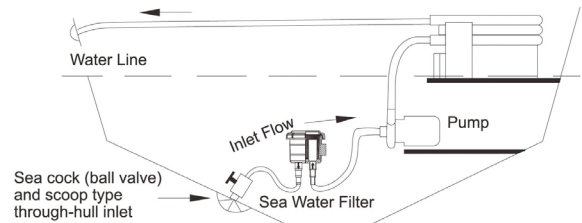
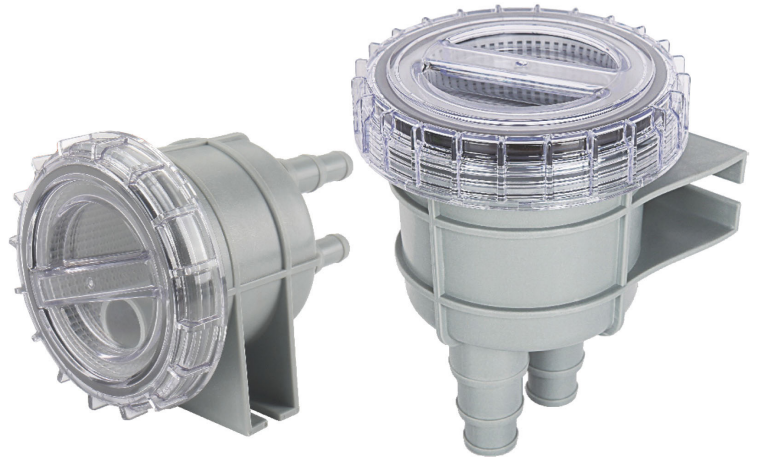
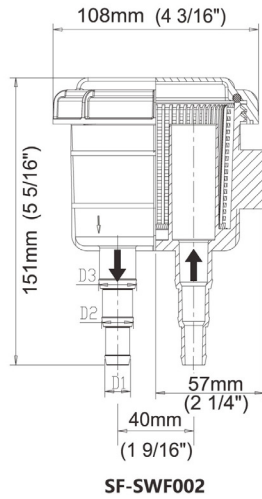
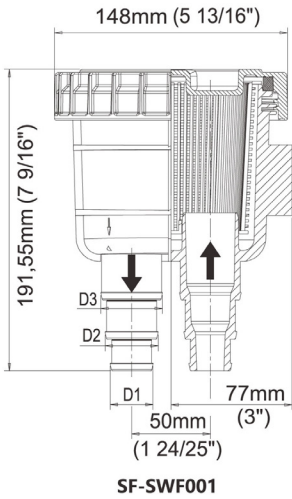


| Art No. | Size                          | Fitting Type                  | Material    |
|---------|-------------------------------|-------------------------------|-------------|
| 21F001  | 15/32" x 3/8" Barb            | HB Elbow Fitting w/ O-Ring    | PA          |
| 21F002  | 15/32" x 1/2" Barb            | HB Elbow Fitting w/ O-Ring    | PA          |
| 21F003  | 1/4" x 1/4" QA                | TUBE Elbow Fitting w/ O-Ring  | POM         |
| 21F004  | 15/32" x 3/8" Barb            | HB Elbow Fitting w/ O-Ring    | PA          |
| 21F005  | 15/32" x 1/4" Barb            | HB Elbow Fitting w/ O-Ring    | PA          |
| 23F001  | 5/8" QA x 3/8" Barb           | HB Straight Fitting w/ O-Ring | PA          |
| 23F002  | 5/8" QA x 3/8" Barb           | HB Elbow Fitting w/ O-Ring    | PA          |
| 23F003  | HB Straight Fitting w/ O-Ring | HB Straight Fitting w/ O-Ring | PA          |
| 23F004  | 5/8" QA x 3/8" Barb           | HB Straight Fitting w/ O-Ring | PA          |
| 41F001  | 3/4" QA x 1/2" Barb           | HS Elbow Fitting w/ O-Ring    | Black Nylon |
| 41F002  | 3/4" QA x 1/2" MNPT           | MNPT Elbow w/O-Ring           | Black Nylon |
| 41F003  | 3/4" QA x 1/2" Barb           | HS Straight Fitting w/ O-Ring | Black Nylon |
| 41F004  | 3/4" QA x 1/2" MNPT           | MNPT Straight w/ O-Ring       | Black Nylon |
| 41F005  | 3/4" QA x 1/2"                | TUBE Straight w/ O-Ring       | Black Nylon |
| 41F006  | 3/4" QA x 3/4" Barb           | HS Straight Fitting w/ O-Ring | Black Nylon |
| 42F001  | 1/2" FNPT x G 1/2"            | NPT Standard to G Standard    | Copper      |
| 51F001  | 1/2" -14 FN PT x 1/2" Barb    | HSE Barb Straight Fitting     | POM &PP     |
| 51F002  | 1/2" -14 FNPT x 3/8" Barb     | HSE Barb Straight Fitting     | POM &PP     |
| 51F003  | 1/2" -14 FN PT x 1/2" Barb    | HSE Barb Elbow Fitting        | POM &PP     |
| 51F004  | 1/2"-14 FNPT x 1/2"-14 MNPT   | MNPT Elbow Fitting            | POM &PP     |
| 51F005  | 1/2" -14FNPT x 3/8" Barb      | HSE Barb Elbow Fitting        | POM &PP     |
| 51F008  | 1/2" -14FNPT x 3/4" Barb      | HSE Barb Straight Fitting     | POM &PP     |
| 51F009  | 1/2" FNPT x 1/2" FNPT         | HSE Barb Straight Fitting     | POM &PP     |
| 51F010  | 1/2" FNPT x 3/4" MNPT         | HSE Barb Straight Fitting     | POM &PP     |



## SEA WATER FILTER

- Removes debris and particles from seawater preventing potential wear and damage to systems on board
- Removable clear lid makes inspection and filter cleaning easy
- Available in two sizes to accommodate a range of hose sizes via the stepped hose tails



| Art No.       | Hose Tail Size              | Recommended Hose Size | Recommended Input           |
|---------------|-----------------------------|-----------------------|-----------------------------|
| <b>SWF002</b> | 12.7 mm / 15.9 mm / 19.1 mm | 13 mm / 16 mm / 19 mm | 23 / 35 / 51 Ltr per min.   |
| <b>SWF001</b> | 25.4 mm / 31.8 mm / 38.1 mm | 25 mm / 32 mm / 38 mm | 91 / 143 / 200 Ltr per min. |

## GENUINE PARTS AND ACCESSORIES



**41503**



**51501**



**52501**

| Art No.      | Size                   | Fitting Type                        | Mesh Size |
|--------------|------------------------|-------------------------------------|-----------|
| <b>41503</b> | 3/4" Male Quick Attach | 3/4" Female Quick Attach            | 50        |
| <b>51501</b> | 1/2"-14 MNPT           | 1/2"-14 FNPT Inline Filter/Strainer | 50        |
| <b>52501</b> | 3/4" Male Quick Attach | 1/2" Hose Barb                      | 50        |



**01 Series Square Pressure Switch**



**01 Series Square Pressure Switch**



**51 New/SS Series Pressure Switch**

| Art No.                                 | Pressure Range | Max Amp. | Suitable For                                  |
|---|----------------|----------|---|
| <b>01 Series Square Pressure Switch</b> | 17-100 PSI     | 15 A     | 21 / 22 / 33 / 41 short / 42 short / 43 short |
| <b>01 Series Square Pressure Switch</b> | 17-60 PSI      | 25 A     | 41 long / 42 long / 43 long                   |
| <b>51 New/SS Series Pressure Switch</b> | 60 PSI         | 20 A     | 55 New / SS                                   |



## PORTABLE TOILET

- Lightweight and durable
- Brand new and high quality
- Compact design for easy storage and transportation
- Large, comfortable seat, simple to use, easy to maintain
- No external water or power connection required
- Easy to carry, easy to clean



Cover of waste holding tank



Handle



Hand pump



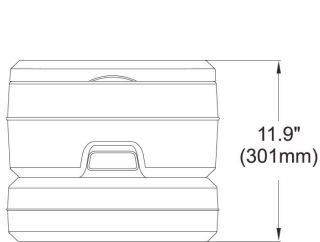
Handle of waste water valve



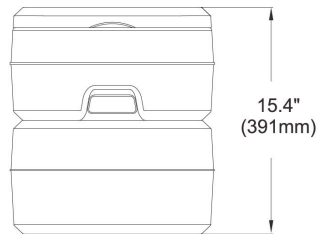
Waste water valve



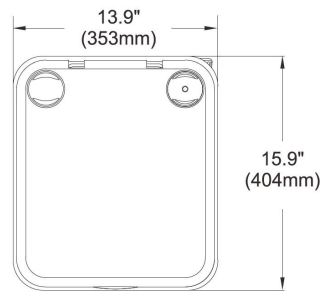
Sewage drain outlet



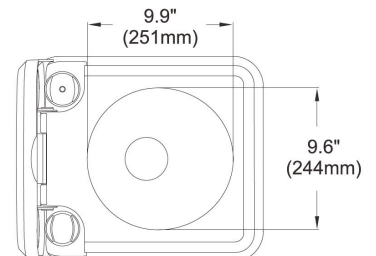
10 L



20 L



Top



Bottom

| Art No. | Fresh Water Tank       | Waste Holding Tank     | Dimension (L x W x H mm) | Colour | Material          | Packaging Includes                        |
|---------|------------------------|------------------------|--------------------------|--------|-------------------|---|
| PT1001  | 13 litre (3.43 gallon) | 10 litre (2.64 gallon) | 404 x 353 x 301          | Grey   | PP, PA, HDPE, ABS | 1 x portable toilet,<br>1 x owners manual |
| PT2001  | 13 litre (3.43 gallon) | 20 litre (5.28 gallon) | 404 x 353 x 391          | Grey   | PP, PA, HDPE, ABS | 1 x portable toilet,<br>1 x owners manual |



**DELUXE PORTABLE TOILET**

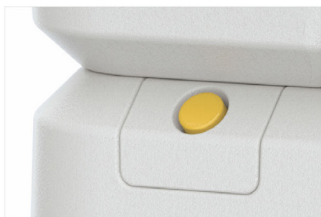
- Impact & drop resistant, well-sealed
- Double-layer seal to isolate peculiar smell
- Compact design for easy storage and transportation
- Large, comfortable seat, simple to use, easy to maintain
- Split portable design, easy to carry
- Anti-slip and anti-drop design
- Blow moulding process is integrated, durable and leak-proof
- Load-bearing connection lock



**Level Indicator**  
Display the level of content in waste tank, avoid overflow protection.



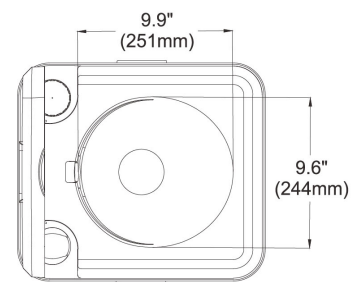
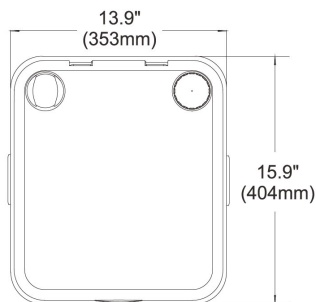
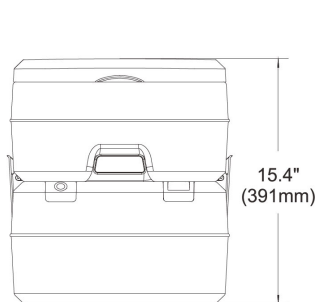
**180° Rotating emptying spout**  
M60mm rotating spout, for hygiene and better experience.



**Air Release Button**  
Press the button to prevent spilling and splashing before use. Decompression valve exhausts to prevent sewage from spraying out.



**T-type flush nozzle and bowl**  
360° vortex scouring. It uses as little as 50ml water to flush the whole bowl and waste tank can be cleaned thoroughly. Ergonomic toilet seat, longer, deeper and more comfortable.



| Art No. | Fresh Water Tank       | Waste Holding Tank     | Dimension (L x W x H mm) | Colour | Material          | Packaging Includes                     |
|---------|------------------------|------------------------|--------------------------|--------|-------------------|--|
| PT2002  | 15 litre (3.75 gallon) | 20 litre (5.28 gallon) | 404 x 353 x 391          | Grey   | PP, PA, HDPE, ABS | 1 x portable toilet, 1 x owners manual |



## MANUALLY OPERATED MARINE TOILET

SEAFLO Manually Operated Marine Toilet can be installed in both power and sailing craft, either above or below the waterline, for use on sea, river, lake or canal. Your installation may discharge the waste either overboard (provided that your national and local regulations allow this), or into a treatment system or into an on-board holding tank.

- Baked enamel seat & cover in compact or regular size
- Twist "n" Lock handle eliminates leaks
- Can be reassembled with the pump on the right or left side
- Powerful self-priming pump for above or below waterline installation
- Crevice free contours and smooth mouldings for added hygiene
- Automatic vacuum breaker for easier pumping
- Angled pump housing and long stroke for ease of installation
- Wood seat with baked enamel finish for compact type only
- Soft close seat for regular type only

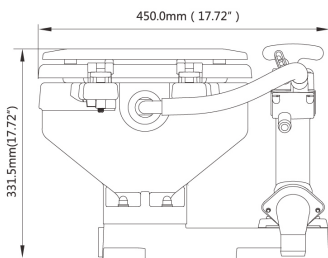
**Regular**



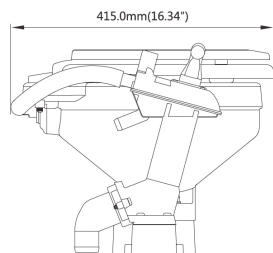
**Compact**



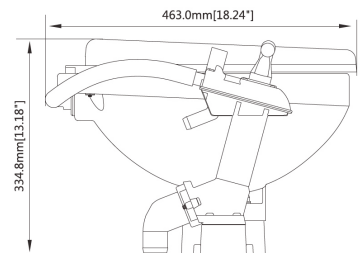
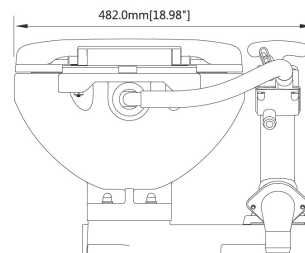
**Hand Flush Pump**



**Regular**



**Compact**



| Art No. | Colour | Diameter                    | Size    | Type          | Material   |
|---------|--------|-----------------------------|---------|---------------|--|
| MTM01   | White  | 3/4" inlet 1 1/2" discharge | Compact | Manual piston | Ceramic bowl, wood seat with baked enamel finish |
| MTM01R  | White  | 3/4" inlet 1 1/2" discharge | Regular | Manual piston | Ceramic bowl, soft close seat                    |



**ELECTRIC MARINE TOILET**

A dual-action pump eliminates the need for hand pumps and dry-bowl valves. With the push of a button, the self-priming flush pump rinses the bowl as the Macerator and high-capacity scavenger pump grind up waste and pump it out. Includes a heavy-duty push button and 1" discharge hose adaptor. Easy-to-clean ceramic bowl.

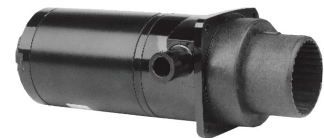
- Convenient push-button flush
- Easy-to-clean ceramic bowl
- Flexible impeller flush pump
- Permanent magnet type motor, fully enclosed, with stainless steel shaft
- Built-in back flow preventer
- All corrosion resistant material for marine use
- Wood seat with baked enamel finish for compact type only
- Soft close seat for regular type only



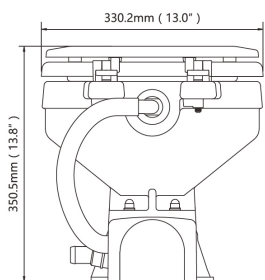
MTE101R / MTE201R



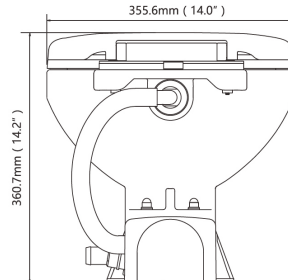
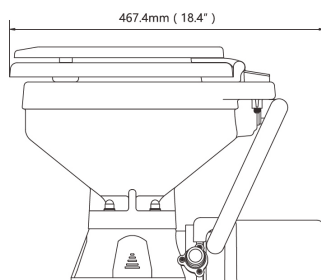
MTE101 / MTE201



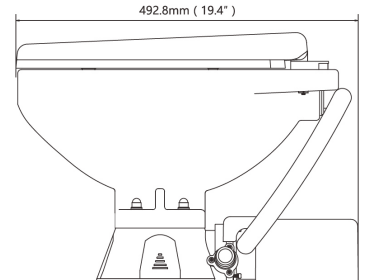
Electric Flush Pump  
MTP101 (12 V) /  
MTP201 (24 V)



Compact



Regular



| Art No. | Colour | Features           | Voltage | Max Draw | Diameter                | Size      | Type              | Material   |
|---------|--------|--------------------|---------|----------|-------------------------|-----------|-------------------|--|
| MTE101  | White  | Built in macerator | 12 V    | 20 A     | 3/4" inlet 1" discharge | Household | Electric impeller | Ceramic bowl, wood seat with baked enamel finish |
| MTE201  | White  | Built in macerator | 24 V    | 10 A     | 3/4" inlet 1" discharge | Household | Electric impeller | Ceramic bowl, wood seat with baked enamel finish |
| MTE101R | White  | Built in macerator | 12 V    | 20 A     | 3/4" inlet 1" discharge | Household | Electric impeller | Ceramic bowl, soft close seat                    |
| MTE201R | White  | Built in macerator | 24 V    | 10 A     | 3/4" inlet 1" discharge | Household | Electric impeller | Ceramic bowl, soft close seat                    |



## ELECTRIC TOILET CONVERSION KIT

The electric flush pump provides the convenience of an electric head without having to modify the platform or replace the head. The self priming pump rinses the bowl while the waste pump macerates and evacuates waste.

- Converts manual head to electric operation
- Simple to operate
- Suitable for use in above or below waterline installations
- Built-in macerator with stainless steel chopper plate
- Left and right handed installations
- Compatible with most brands of toilets of similar design
- Directly replaces manual pump assembly

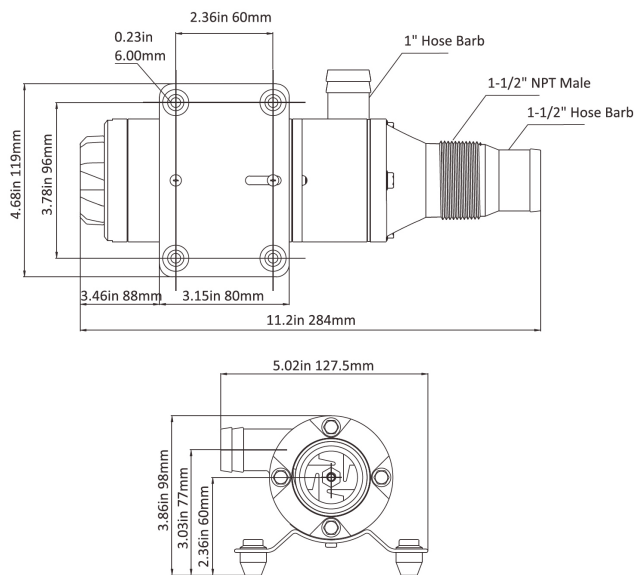


MTP102 / MTP202

| Art No. | Colour | Features           | Max Draw | Diameter                    | Type                      |
|---------|--------|--------------------|----------|-----------------------------|---------------------------|
| MTP102  | White  | Built in macerator | 24 A     | 3/4" Inlet 1-1/2" Discharge | 12 volt electric impeller |
| MTP202  | White  | Built in macerator | 13 A     | 3/4" Inlet 1-1/2" Discharge | 24 volt electric impeller |

## MACERATOR PUMP

- Triple sealed motor & bearings
- 4-blade cutter reduces possibility of clogging
- Capable of dry running for short periods of time
- Self-priming to 1.2m
- Ignition & thermally protected
- Manual blending function via knob (supplied) for emergency use
- Rubber & aluminium impeller
- 60°C (140°F) temperature limit
- 2 Year Warranty



### Included



Knob



Blade



Impeller (0.31") 8 mm

| Art No.  | Flow Rate       | Volts | Max Draw | Inlet Ports              | Outlet Ports | Weight  |
|----------|-----------------|-------|----------|--------------------------|--------------|---------|
| MP112001 | 12 GPM / 45 LPM | 12 V  | 12A      | 1-1/2" Barb & 1-1/2" NPT | 1" Barb      | 2.24 kg |
| MP212001 | 12 GPM / 45 LPM | 24 V  | 6 A      | 1-1/2" Barb & 1-1/2" NPT | 1" Barb      | 2.24 kg |





## IN-LINE BLOWERS – 03/04 SERIES

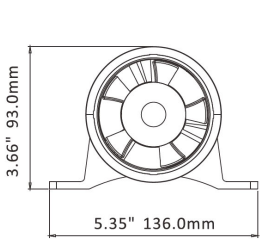
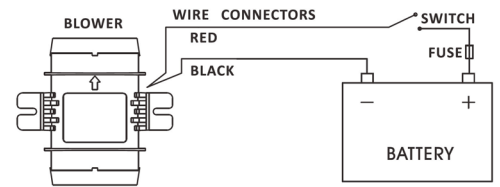
- Meets or exceeds ISO 8846 certification
- Built-in mounting feet allows easy vertical or horizontal installation
- Very low current draw, high volume air flow, long life
- Five blade fan maximises airflow and efficiency
- Sealed motor shaft for moisture protection
- Corrosion resistant ABS plastic housing
- Smaller size for any limited area



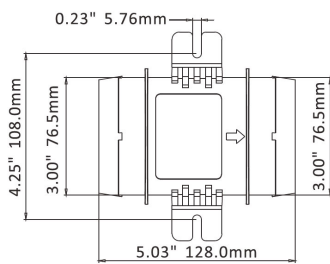
145 CFM



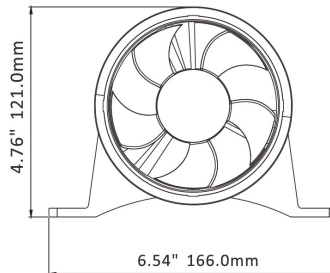
235 CFM



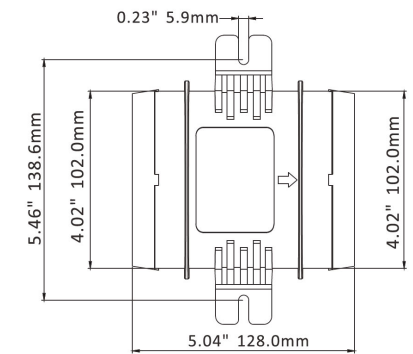
3.66" 93.0mm  
5.35" 136.0mm



145 CFM



4.76" 121.0mm  
6.54" 166.0mm



235 CFM

| Art No.  | Volts | Air Flow (cfm / cmh) | Amp Draw | Fuse  | Intake Pipe Dia. | Packing Size (mm) | N.W. / G.W. (kg) |
|----------|-------|----------------------|----------|-------|------------------|-------------------|------------------|
| IB114503 | 12 V  | 145 / 247            | 3.0 A    | 5.0 A | 3" / 76 mm       | 140 x 133 x 95    | 0.34 / 0.41 kg   |
| IB214503 | 24 V  | 145 / 247            | 1.5 A    | 2.5 A | 3" / 76 mm       | 140 x 133 x 95    | 0.34 / 0.41 kg   |
| IB123504 | 12 V  | 235 / 400            | 4.0 A    | 7.0 A | 4" / 102 mm      | 170 x 133 x 123   | 0.40 / 0.49 kg   |
| IB223504 | 24 V  | 235 / 400            | 2.0 A    | 4.0 A | 4" / 102 mm      | 170 x 133 x 123   | 0.40 / 0.49 kg   |

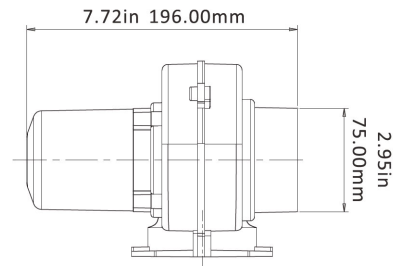
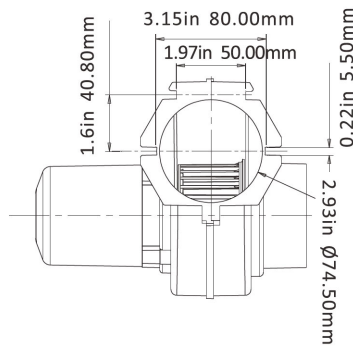
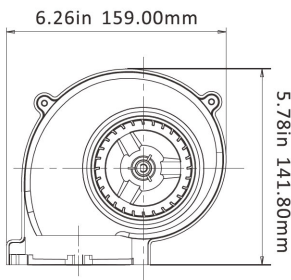


## IN-LINE BLOWERS – 01 SERIES

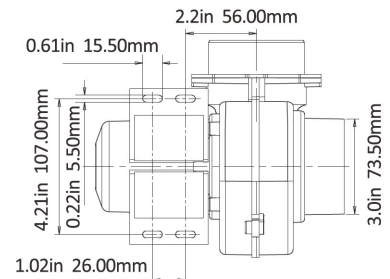
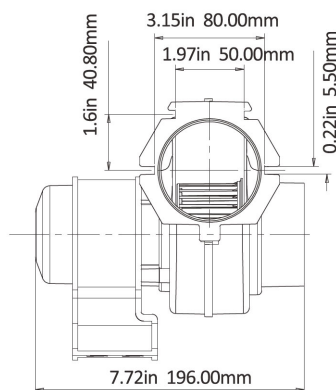
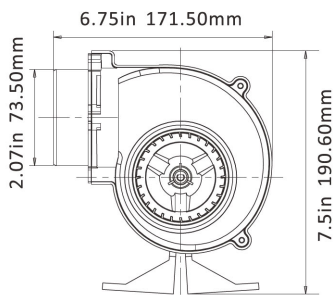
- Dual mounting options
- Efficient high volume air flow
- Very low current draw, long life
- Flex mount or flange mount
- Sealed motor shaft for moisture protection
- Corrosion resistant ABS plastic housing
- Ignition protection
- CE conforms with EN 50014-1, EN N 61000-3-3



### Flange Mount



### Flex Mount



| Art No.  | Volts | Air Flow (cfm / cmh) | Amp Draw | Fuse  | Packing Size (mm) | N.W. / G.W. (kg) |
|----------|-------|----------------------|----------|-------|-------------------|------------------|
| BB114503 | 12 V  | 130 / 220            | 2.5 A    | 5.0 A | 160 x 160 x 200   | 0.71 / 0.83 kg   |
| IB223504 | 24 V  | 130 / 220            | 1.5 A    | 3.0 A | 160 x 160 x 200   | 0.71 / 0.83 kg   |



## IN-LINE BLOWERS – 02/03 SERIES

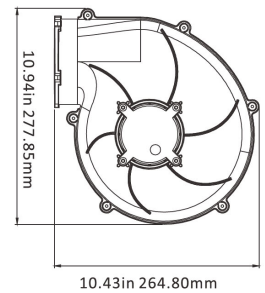
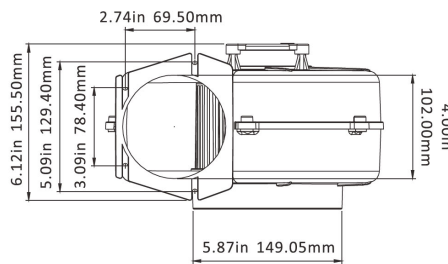
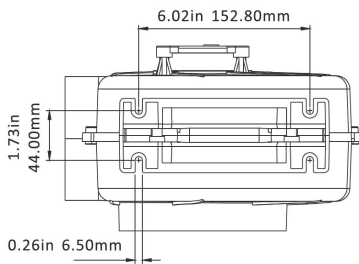
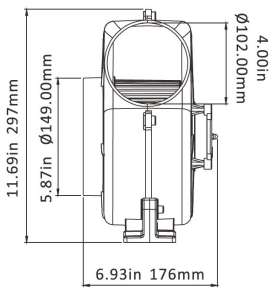
- Efficient high volume air flow
- Very low current draw, long life
- Available in either flex mount or flange mount
- Sealed motor shaft for moisture protection
- Ignition protected
- CE conforms with EN 50014-1, EN N 6100-3-3



02



03



### Flex Mount-02

The flex mount is when the motor mounting bracket is used to secure to blower. The hose would have to be connected to both the inlet and outlet.

### Flange Mount-03

The flange mount is when the blower is mounted using the outlet mounting flange to secure the pump.

| Art No.  | Volts | Air Flow (cfm / cmh) | Amp Draw | Fuse   | Packing Size (mm) | N.W. / G.W. (kg) |
|----------|-------|----------------------|----------|--------|-------------------|------------------|
| BB132002 | 12 V  | 320 / 550            | 11.0 A   | 16.0 A | 320 x 270 x 280   | 2.27 / 2.45 kg   |
| BB232002 | 24 V  | 320 / 550            | 6.0 A    | 10.0 A | 320 x 270 x 280   | 2.27 / 2.45 kg   |
| BB132003 | 12 V  | 320 / 550            | 11.0 A   | 16.0 A | 320 x 270 x 280   | 2.46 / 2.56 kg   |
| BB232003 | 24 V  | 320 / 550            | 6.0 A    | 10.0 A | 320 x 270 x 280   | 2.46 / 2.56 kg   |