



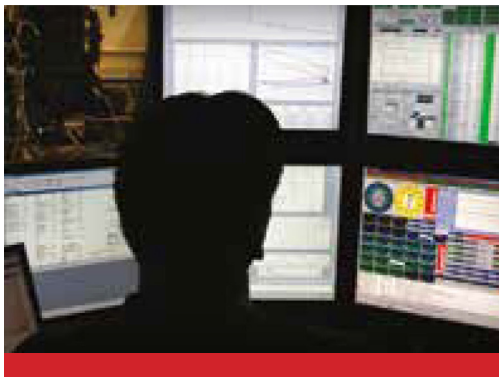
MARINER

FOURSTROKE



BARRUS

WHY CHOOSE MARINER



All outboards are extensively tested in the engineering lab where technicians can monitor all engine vital signs and performance.



Component samples are drawn from the assembly line and checked to ensure conformity with the original design.



Mariner's exclusive pressurized lost-foam foundry produces more-intricate castings that require fewer fasteners for lighter weight and increased reliability.



Mariner's in-house heat-treating facility ensures that components are robust to withstand the most demanding applications.



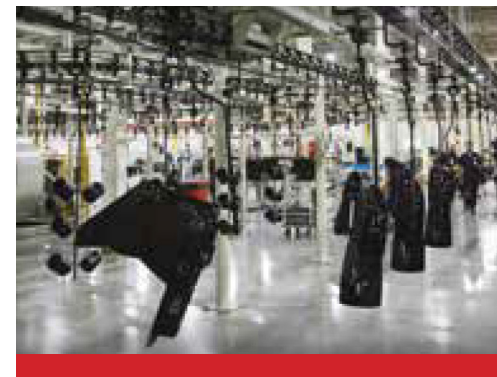
Gears are precision-machined in-house at Mariner to ensure the highest levels of quality and durability.



Mercury Marine produces the best performing propellers. Each stainless steel prop begins as a perfect wax replica of the final product.



Mariner's Sound Lab is where our engineers analyze and optimize sound quality in order to achieve world-class noise, vibration and harshness (NVH) levels.



Along with using the best possible corrosion-fighting materials, Mariner's exclusive multistep painting and coating process helps Mercury Four-Stroke deliver powerful saltwater protection.



Following testing, technicians install the propeller and top cowl, then make final quality checks before the engine is boxed, assuring the ultimate in reliability.



Reliability is built into the Mariner lightweight FourStroke outboards. They are built with the materials and processes that assure Mercury quality, no matter how large - or small - the outboard.



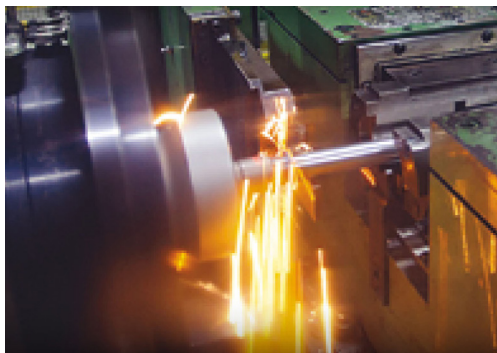
Gears of the Mariner are precision-machined to ensure the highest level of quality and durability.



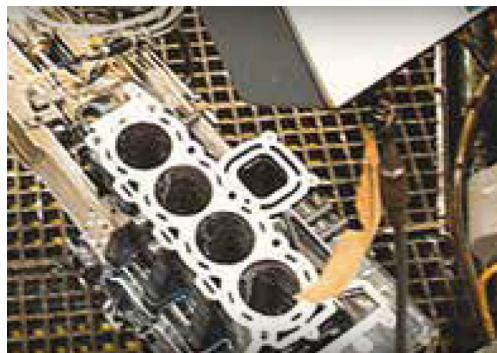
Portable Mariner outboards are made to the same exacting quality standards as their high-horsepower siblings.



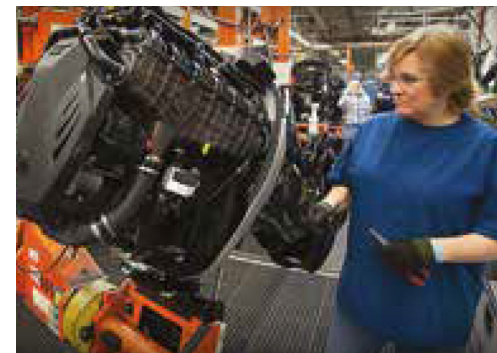
Mariner's powder paint top coat, which contains plasticisers for superior flexibility and long-term adhesion, is thermo-cured, resulting in a much harder, thicker and tougher finish than conventional paint.



In addition to component tests performed throughout the assembly process, each Mariner is run and tested prior to being boxed.



Robotic machining cells ensure consistent quality and precision.



Ergonomic assembly fixtures allow Mariner technicians to focus on the details, engine after engine, all shift long.



MARINER



DEPENDABLE PORTABLES

Never before has portable power seemed so perfect, our 2.5hp and 3.5hp FourStrokes may be small, but they're filled with big ideas. Both engines feature neutral and forward shift and a tiller steering that rotates 360 degrees and a twist grip throttle for maximum manoeuvrability and one hand control. Plus a very clearly visible sight gauge makes it easy to monitor and maintain a proper oil level.

Features

PERFORMANCE

- Large displacement engine provides excellent low to mid-range power.
- Quiet, smooth-running and smoke free operation.

OPTIONAL 5-YEAR WARRANTY

- Five-year limited non-declining, factory-backed. Conditions and exclusions apply.*
Not applicable for commercial and racing applications.
- Two-year limited commercial warranty.†

RUNNING QUALITY

- Through prop exhaust buries the engine noise underwater.
- 4 trim positions plus shallow water drive allow easy access to remote areas.
- Vibration isolated twist grip throttle provides a smooth interaction with the engine.

RELIABILITY

- CDI ignition offers maintenance-free dependability and easy starting.
- Superior corrosion protection provides longer life.

TECHNOLOGY

- Visual low pressure warning system.
- Decompression system for quick, effortless one handed starting.

*Terms & Conditions apply.



WHY CHOOSE MARINER

LARGE DISPLACEMENT

- Overhead design for optimum power.
- Largest displacement in 2.5hp class.
- 18% more displacement than competitor.
- More torque at same weight.

LONG TILLER HANDLE WITH TWIST THROTTLE

- Steering friction easily adjusted.
- Durable design providing easy access for operator.
- 32% less vibration than Honda 2.3hp.
- 10% less vibration than Yamaha 2.5hp.
- Customer comfort and less vibration.

1 LITRE INTEGRAL FUEL TANK

- External fuel shutoff valve. Can be laid on three sides.
- Safe portability and storage.

COMPACT AND LIGHTWEIGHT

- 3.5hp offers more horsepower with the same weight of competitive 2.5hp.
- Easy to carry and transport.

QUIET RUNNING

- One piece block design & underwater exhaust.



ADDITIONAL FEATURES & BENEFITS

CD ignition	Maintenance free and ensures easy starting
Freshwater flushing port	User friendly - Flushes salt water and debris out of the engine extending the life of the outboard
Easy rope starting	Convenient for all family members to be able to start with an easy pull
Oil site gauge	Customer convenience
Over-rev protection	Can't over-rev the engine. Consumer confidence
Thermostatically controlled water cooling	Consistent operating temperature. Less chance of overheating.
Fuel shut off valve	Portability and safe transport with no danger of fuel spill
Manual choke with automatic fast idle	Easy starting in all conditions
Automatic decompression	Easy pull starts
Easy drain oil system	Quick and easy. Reduced maintenance time
4 manual trim positions	Maximizes hull performance
Throttle friction adjustment	Set and the maintain speed so you don't have to constantly hold the throttle
Auto reverse lock	Automatically locks engine in position so the engine doesn't kick up
Ability to store on either side	Worry free, convenient storage
Tilt lock system	Convenience when removing boat from water or portaging
Ergonomic carrying handle	Convenient for transporting and easy to carry
Composite 3 blade propeller	Lightweight performance and increased thrust over 2 blades
Stainless steel shear pin	User friendly maintenance - won't rust

FOUR STROKE	MARINER 2.5/3.5 hp	YAMAHA 2.5 hp	SUZUKI 2.5 hp	TOHATSU 2.5/3.5 hp	HONDA 2.3 hp
Engine Type	1 cylinder	1 cylinder	1 cylinder	1 cylinder	1 cylinder
Displacement	85 cc	72 cc	68 cc	85 cc	57 cc
Dry Weight*	17 kg	17 kg	13.5 kg	18.4 kg†	14 kg

*Lightest model available. Website specification comparison. Correct as of 01/09/2014

†Commissioned weight



MARINER



THE COMPLETE PORTABLE PACKAGE

Taking the fun with you is one of the great advantages of owning an inflatable boat or small fishing boat. Mariner offers a complete line of extremely light portable FourStroke outboards, with the widest range of models to choose from. So wherever you and your boat go, so can your Mariner portable FourStroke. The entire range makes operation and portability easy with smart, simple features. Plus, clean, quiet, fuel-efficient FourStroke performance makes them the obvious power of choice.

Features

PERFORMANCE

- Large displacement engine provides excellent low to mid-range power.
- Quiet, smooth-running and smoke free operation.

5-YEAR WARRANTY

- Five-year limited non-declining, factory-backed. Conditions and exclusions apply.*
Not applicable for commercial and racing applications.
- Two-year limited commercial warranty.†

RUNNING QUALITY

- Through prop exhaust buries the engine noise underwater.
- 6 trim positions plus shallow water drive allow easy access to remote areas.
- Vibration isolated twist grip throttle provides a smooth interaction with the engine.

RELIABILITY

- CDI ignition offers maintenance-free dependability and easy starting.
- Superior corrosion protection provides longer life.

TECHNOLOGY

- Visual low pressure warning system.
- Decompression system for quick, effortless one handed starting.



*Terms & Conditions apply.

†2 Year Government/Commercial Warranty. Terms & Conditions apply. May require extra components. i.e. under cowl hour meter.

WHY CHOOSE MARINER

LIGHTWEIGHT DESIGN

- At 26kg, one of the lightest in the market.
- Easy to transport with ergonomic handle.
- Convenience and ease of use.

INTEGRAL FUEL TANK

- External fuel shutoff valve and remote tank connection.
- Can be laid on three sides.
- Safe portability and storage.

FORWARD MOUNTED F-N-R SHIFT LEVER

- Allows for easy to reach shift operation, along with the longer tiller handle, for precise throttle control.
- Better manoeuvrability and control.

6 POSITION SHALLOW WATER DRIVE

- Allows user to get maximum versatility in a variety of boating situations.
- Allows extended tilt angles in shallow water at low speed operation.
- Maximum performance and convenience.

EXCLUSIVE THROUGH PROP EXHAUST

- No other 4hp offers this feature so no other is as quiet or efficient.
- Yamaha and Suzuki use "over the prop" exhaust which increases slippage.
- Customer comfort and less vibration.
- Performance, noise reduction and durability.



ADDITIONAL FEATURES & BENEFITS

CD ignition	Maintenance free and ensures easy starting
Automatic decompression release	Convenient for all family members to be able to start with an easy
Automatic reverse lock	Automatically locks engine in position so the engine doesn't kick up
Low oil pressure warning system	Alerts operator for piece of mind
Over-rev protection	Can't over-rev the engine. Consumer confidence
Thermostatically controlled water cooling	Consistent operating temperature. Less chance of overheating.
Fuel shut off valve	Portability and safe transport with no danger of fuel spill
Manual choke with automatic fast idle	Easy starting in all conditions
Optional 4 amp alternator*	Provides battery charging on demand and allows use of electronics and lights
Integral fuel tank	Portability
Twist grip throttle	Comfortable and easy to use
Throttle friction adjustment	Set and the maintain speed so you don't have to constantly hold the throttle
Steering friction adjustment	For easy adjustment of steering operation
Robust tiller handle	Durable convenient operation
Through prop exhaust	Quiet, smoke free operation
Ergonomic carrying handle	Convenient for transporting and easy to carry
Aluminium propeller	Standard - Added value
Freshwater flush	User friendly - easy maintenance

*Standard on Sailmate

	FOUR STROKE	MARINER 4/5/6 hp	YAMAHA 4/6 hp	SUZUKI 4/5/6 hp	TOHATSU 4/5/6 hp	HONDA 5 hp
Engine Type	1 cylinder	1 cylinder	1 cylinder	1 cylinder	1 cylinder	1 cylinder
Displacement	123 cc	139 cc	138 cc	123 cc	127 cc	
Dry Weight*	26 kg	27 kg	26 kg	26 kg	28 kg	
Integral Tank	1.0L	1.1L	1.5L	1.1L	N/A	

*Lightest model available. Website specification comparison. Correct as of 01/09/2014



MARINER



LEAN MEAN PORTABLE MACHINES

Even with all the user-friendly features included, our 8 and 9.9hp FourStrokes are one of the lightest in their class. A convenient multifunction tiller handle provides easy one-hand shifting operation while the manual choke and primer features makes it easy to get things started. Plus these outboards come equipped with our exclusive automatic reverse hooks that don't require you to manually change the clumsy lever to hold the engine in place while running in reverse.

Features

PERFORMANCE

- Clean and efficient, with plenty of torque to keep the fun.
- Multi-function tiller handle controls shift, stop, throttle, throttle friction and steering for one hand operation.
- Inherent FourStroke characteristics include quiet, smooth operation and exceptional idling.

5-YEAR WARRANTY

- Five-year limited non-declining, factory-backed. Conditions and exclusions apply.*
Not applicable for commercial and racing applications.
- Two-year limited commercial warranty.†

RUNNING QUALITY

- Overhead cam design for quiet and efficient operation.
- 5 trim positions plus shallow water drive allow easy access to remote areas and better control in shallow waters.
- Manual recoil starter, even on electric start models.

RELIABILITY

- Enhanced fuel primer and manual choke deliver instant starts every time.
- Visual low pressure warning system.

TECHNOLOGY

- Electric start models feature a 6 amp / 76 watt alternator to keep batteries properly charged.

*Terms & Conditions apply.

†2 Year Government/Commercial Warranty. Terms & Conditions apply. May require extra components. i.e. under cowl hour meter.



WHY CHOOSE MARINER

LIGHTWEIGHT & COMPACT DESIGN

- At only 37.6kg, this engine is perfect for a wide range of small boats.
- Versatility in applications.
- Ergonomic handle keeps the weight balanced for easier carrying.
- Portability for convenient transporting.

MULTI-FUNCTION TILLER HANDLE

- Offers one hand operation and total control over shifting, throttle, steering, engine stop, throttle friction and tilting.
- Better manoeuvrability and ease of use.

EXCLUSIVE RATCHETING TRIM

- Push down on the tiller handle to manually reset the 3-position memory tilt pin.

EXCLUSIVE FUEL PRIMER & FAST IDLE SYSTEM

- Better than competitive auto-choke systems that prove to lean for today's changing fuels.
- Provides fast, easy starting and simple fast idle control.
- Reliability.



ADDITIONAL FEATURES & BENEFITS

Tilt lock	Handy when removing boat from water
Water cooled fuel cooler	Thermostatically controlled - Minimises vapour lock and hot fuel issues for long term reliability
Manual recoil starter	Standard on all electric start models ensuring engine can be started if battery loses its charge
CD ignition	No maintenance - quick reliable starts
Over-rev protection	Can't over-rev the engine. Consumer confidence
Low oil pressure warning system	Alerts operator to prevent engine damage
Manual or electric start	Always be able to start the engine if the battery is flat
6 amp alternator (electric models)	Provides battery charging on demand and allows use of electronics and lights
Twist grip throttle	Comfortable and easy to use
Throttle friction adjustment	Set and the maintain speed so you don't have to constantly hold the throttle
Robust tiller handle	Durable convenient operation
Ergonomic carrying handle	Convenient balanced transporting
Aluminium propeller	Standard - added value
Freshwater flush system	User friendly - easy maintenance
Automatic reverse lock	Automatically locks engine in position so the engine doesn't kick up
F-N-R shift	Easy manoeuvrability
5 tilt positions and shallow water drive	Maximises hull performance
Easy Access Oil Drain Plug	Easy maintenance
Throttle only button	Tiller models only - easy starting in rare case of a flooded engine

FOUR STROKE	MARINER 8/9.9 hp	YAMAHA 8/9.9 hp	SUZUKI 8/9.9 hp	TOHATSU 8/9.9 hp	HONDA 8/10 hp
Engine Type	2 cylinder	2 cylinder	2 cylinder	2 cylinder	2 cylinder
Displacement	208 cc	197/212 cc	208 cc	208 cc	222 cc
Dry Weight*	37 kg	38/40 kg	43 kg	37.2 kg	52.5 kg

*Lightest model available. Weight based on owners manual.



MARINER



DEPENDABILITY COMES AS STANDARD

Bigger isn't always better as inflatables, tenders and small boats prove with their easy mobility. So, wherever the mood takes you, there's a Mariner FourStroke to suit. The 15 and 20 hp models are loaded with typical Mariner features, which translate into smooth, problem-free and economical operation, all with low emissions and terrific fuel-efficiency. Safety, dependability and ease of use as demonstrated by the multi-function tiller handle, are Mariner hallmarks.

Features

PERFORMANCE

- Clean and efficient, with plenty of torque to keep the fun.
- Multi-function tiller handle controls shift, stop, throttle, throttle friction and steering for one hand operation.
- Inherent FourStroke characteristics include quiet, smooth operation and exceptional idling.

5-YEAR WARRANTY

- Five-year limited non-declining, factory-backed. Conditions and exclusions apply.*
Not applicable for commercial and racing applications.
- Two-year limited commercial warranty.†

RUNNING QUALITY

- Overhead cam design for quiet and efficient operation.
- 5 trim positions plus shallow water drive allow easy access to remote areas and better control in shallow waters.

RELIABILITY

- Enhanced fuel primer and manual choke deliver instant starts every time.
- Visual low pressure warning system.

TECHNOLOGY

- Electric start models feature a 6 amp / 76 watt alternator to keep batteries properly charged.
- Manual recoil starter, even on electric start models.

*Terms & Conditions apply.

†2 Year Government/Commercial Warranty. Terms & Conditions apply. May require extra components. i.e. under cowl hour meter.



WHY CHOOSE MARINER

LIGHTWEIGHT & COMPACT DESIGN

- At 351cc, this engine delivers strong low end torque needed to get the hull up on the plane.
- Quicker throttle response and acceleration.
- Maximum overall performance and efficiency.
- Portability for convenient transporting.

MULTI-FUNCTION TILLER HANDLE

- Offers one hand operation and total control over shifting, throttle, steering, engine stop, throttle friction and tilting.
- Better manoeuvrability and ease of use.

EXCLUSIVE ENGINE MOUNT

- Mariner's "wishbone" style motor mount system cradles the powerhead, absorbing the torsional rotation of the crankshaft and isolating any vibration transmission to the hull.
- Provides smooth overall operation.

EXCLUSIVE FUEL PRIMER & FAST IDLE SYSTEM

- Better than competitive auto-choke systems that prove to lean for today's changing fuels.
- Provides fast, easy starting and simple fast idle control.
- Reliability.

AUTOMATIC REVERSE LOCK

- Hooks automatically engage when shifting to reverse to prevent engine from popping out of the water.
- No need to remember to operate a separate lock down lever.



ADDITIONAL FEATURES & BENEFITS

Twin cylinder	Lightweight compact design
CD ignition	No maintenance - quick reliable starts
Over-rev protection	Can't over-rev the engine. Consumer confidence
Low oil pressure warning system	Alerts operator to prevent engine damage
Manual or electric start	Consumer confidence in low battery cases
12 amp alternator	Provides battery charging on demand and allows use of electronics and lights
Ergonomic carrying handle	Convenient, balanced transporting, easy to carry
Thermostatically controlled water cooling	Provides battery charging on demand and allows use of electronics and lights
Through prop exhaust	Quiet smoke free operation
Automatic reverse lock	Automatically locks engine in position so the engine doesn't kick up
F-N-R Shift	Easy manoeuvrability
Dual water pickups	Supply of cooling water at all times
Tiller or remote models	Either tiller arm or steering wheel option
6 trim positions and shallow water drive	Maximises hull performance
Multi function tiller handle	Throttle and gear operation through twist grip
Backup rope on electric models	Always start the engine even if the battery is flat

FOUR STROKE	MARINER 15/20 hp	YAMAHA 15/20 hp	SUZUKI 15/20 hp	TOHATSU 15/20 hp	HONDA 15/20 hp
Engine Type	2 cylinder	2 cylinder	2 cylinder	2 cylinder	2 cylinder
Displacement	351 cc	362 cc	327 cc	351 cc	350 cc
Dry Weight*	52 kg	52.6 kg	54.4 kg	52.6 kg	46.7 kg

*Lightest model available. Website specification comparison. Correct as of 01/09/2014



MARINER

25EFI - 30EFI



BUILD FOR THE LONG RUN

No longer will boaters feel let down by the lack of features on smaller engines because these recently introduced Mariner FourStrokes set new standards for the class. Thanks to the application of new technology, the 25 and 30 EFI are considerably lighter than their predecessors, thereby providing better boat balance and improving handling. With electronic fuel injection providing smoother, cleaner running, these pioneering new small engines also offer improved torque and outstanding fuel economy. As you would expect of Mariner, the pioneering application of EFI in this class brings with it further improved reliability and reduced maintenance, both founded on testing of bigger models.

Features

PERFORMANCE

- Water cooled fuel cooler minimizes vapor lock and hot fuel issues.
- Multi-function tiller handle controls shift, stop, throttle, throttle friction and steering for one hand operation.
- Inherent FourStroke characteristics include quiet, smooth operation and exceptional idling.

5-YEAR WARRANTY

- Five-year limited non-declining, factory-backed. Conditions and exclusions apply.*
Not applicable for commercial and racing applications.
- Two-year limited commercial warranty.†

RUNNING QUALITY

- Sequential EFI independently calibrates the exact amount of fuel needed by each cylinder, for unmatched smoothness, turn-key starting and instantaneous throttle response.
- All models come as standard with a 15 amp/186 watt alternator.

RELIABILITY

- A warning lamp with audio warns the operator of over-rev, low oil pressure or over heat.
- All electric start models feature a manual recoil starter for peace of mind and safety in case of a drained battery.

TECHNOLOGY

- Manual start models feature a 6 amp / 76 watt alternator to keep batteries properly charged.
- Manual recoil starter, even on electric start models.

*Terms & Conditions apply.

†2 Year Government/Commercial Warranty. Terms & Conditions apply. May require extra components. i.e. under cowl hour meter.



WHY CHOOSE MARINER

POWERFUL 3 CYLINDER DESIGN

- Provides better inherent balance for smoother overall operation than a twin cylinder requiring a counter balance.

LIGHTWEIGHT DESIGN

- At 71kg the manual start 25hp EFI is the lightest in its class.
- At 78kg the manual start 30hp EFI is the lightest in its class.

MULTI-FUNCTION TILLER HANDLE

- Offers one-hand operation and total control over shifting, throttle, steering, engine stop, throttle friction and tilting.
- Better manoeuvrability and ease of use.

INDUSTRY-LEADING BATTERY FREE EFI

- Turn-key starting and a quicker throttle response with no carburettors to gum up. Also available on rope start models.
- Dependability and efficiency.

HIGH OUTPUT ALTERNATOR

- 15 Amps provides superior battery charging capabilities (electric start).
- 33% more charging power than Honda (10 amps).
- 13% more charging power than Yamaha (13 amps).



ADDITIONAL FEATURES & BENEFITS

Lightweight	From 71 kg it's one of the lightest in its class
Dual water inlets	Insures proper cooling for all key powerhead and gearcase components
Water cooled fuel cooler	Minimises vapour lock and hot fuel issues. Offers long term reliability
CD ignition	No maintenance - quick reliable starts
Over-rev protection	Can't over-rev the engine. Consumer confidence
Low oil pressure warning system	Alerts operator to prevent engine damage
Manual or electric start	Consumer confidence in low battery cases
15 amp alternator	Provides battery charging on demand and allows use of electronics and lights
Ergonomic carrying handle	Convenient, balanced transporting, easy to carry
Thermostatically controlled water cooling	Provides battery charging on demand and allows use of electronics and lights
Through prop exhaust	Quiet smoke free operation
Automatic reverse lock	Automatically locks engine in position so the engine doesn't kick up
F-N-R Shift	Easy manoeuvrability
Multi function tiller handle	On hand - full range of operations
Tiller or remote models	Fits many applications
6 trim positions and shallow water drive	Maximises hull performance
Tuned cowl induction	Best in class quiet operations, reduced noise

FOUR STROKE	MARINER 25 hp	YAMAHA 25 hp	SUZUKI 25 hp	TOHATSU 25 hp	HONDA 30 hp	EVINRUDE 30 hp
Engine Type	3 cylinder	2 cylinder	3 cylinder	3 cylinder	3 cylinder	2 Cyl. 2-stroke
Displacement	526 cc	498 cc	490 cc	526 cc	552 cc	575
Dry Weight*	71 kg	76 kg	72 kg	81 kg	77.5 kg	70 kg

FOUR STROKE	MARINER 30 hp EFI	HONDA 30 hp	TOHATSU 30 hp EFI	EVINRUDE E-TEC 30 hp 2S
Engine Type	3 cylinder	3 cylinder	3 cylinder	2 cylinder
Displacement	526 cc	552 cc	526 cc	578 cc
Dry Weight*	78 kg	80 kg	82 kg	82 kg

*Lightest model available. Website specification comparison. Correct as of 01/09/2014



MARINER

40EFI



SMOOTH, POWERFUL AND FUEL EFFICIENT

Buying a mid-range Mariner FourStroke means you're buying more because our 40hp motors also feature proven electronic fuel injection which offers renowned fuel efficiency and smooth, quiet operation. This outboard is SmartCraft-ready and are equipped with turn-key starting for fast and reliable ignition. Never has Mariner dependability looked or sounded so good.

Features

PERFORMANCE

- Inherent FourStroke characteristics include quiet, smooth operation and exceptional idling.
- 40% better fuel economy than comparable 2-stroke models.
- Integral power trim adjusts boat's attitude for improved boat handling under a variety of speeds and water conditions.

5-YEAR WARRANTY

- Five-year limited non-declining, factory-backed. Conditions and exclusions apply.*
Not applicable for commercial and racing applications.
- Two-year limited commercial warranty.†

RUNNING QUALITY

- EFI models offer turn-key starting and instantaneous throttle response in all types of atmospheric conditions.
- Low-noise combustion process and sound-dampening cowls for extremely smooth and quiet operation.

RELIABILITY

- Designed for strength and durability.
- Corrosion resistant.
- Stainless steel driveshaft, shift shaft, prop shaft, water pump housings and power head fasteners.

TECHNOLOGY

- SmartCraft technology with Engine Guardian System; monitors engine functions and alerts you to possible engine problems.

*Terms & Conditions apply.



WHY CHOOSE MARINER

POWERFUL 3 CYLINDER DESIGN

- A SOHC and long intake stroke design increases torque output for better acceleration.
- Performance with smooth quiet overall operation.

COMPACT DESIGN

- Compact lightweight design available with manual or electric start and Gas Assist or Power Trim.
- Versatile and efficient.

ELECTRONIC FUEL INJECTION EFI

- Provides turn-key reliable starting, instant throttle response, spectacular fuel economy and lower fuel system maintenance.
- More dependable, more efficient with more power and lower cost of operation.

EASY SHIFT OPERATION

- New precision engineered shift system delivers smooth shifting for an improved driving experience.
- Comfort and reliability.

TAKE IT SLOW

- SmartCraft TROLL CONTROL feature allows you to set your rpm as low as 700 for trolling. (optional extra)

FOUR STROKE	MARINER 40 hp	YAMAHA 40 hp	SUZUKI 40 hp	HONDA 40 hp
Engine Type	3 cylinder	3 cylinder	3 cylinder	3 cylinder
Displacement	747 cc	747 cc	941 cc	808 cc
Dry Weight*	97 kg	101 kg	104 kg	98 kg

*Lightest model available. Website specification comparison. Correct as of 01/09/2014



ADDITIONAL FEATURES & BENEFITS

Lightweight	At 97 kg it's one of the lightest in its class
Gas assist trim	Ease in tilting engine
CD ignition	Maintenance free and ensures easy starting
SmartCraft	Delivers information regarding 23 key engine functions from fuel usage, rpm & engine guardian to slow trolling rpm control and even hull information
Power trim / tilt	Allows users to trim the unit for maximum performance / handling & shallow water operation
Freshwater flushing port	Rear mounted - flushes salt water and debris out of the engine extending the life of the outboard
Easy maintenance	Convenient oil drain and fill location, along with an automotive style spin-on filter

ADVANTAGE OVER SUZUKI

- Long stroke design vs. short stroke - more torque and power
- 7kg lighter - improves hull manoeuvrability
- Compact SOHC vs. complex DOHC - reduced maintenance costs
- SmartCraft (Troll Control) vs. none - enhanced precise trolling

ADVANTAGE OVER SUZUKI

- 18 amp vs. 15 amp alternator - 20% more charging
- Troll Control (10 rpm steps) vs. Variable Trolling (50 rpm steps)*
- SmartCraft vs. Command Link®

*Optional extra



MARINER

50EFI - 60EFI CT



SMOOTH, POWERFUL AND FUEL EFFICIENT

Buying a mid-range Mariner FourStroke means you're buying more because our 50 and 60hp motors also feature proven electronic fuel injection which offers renowned fuel efficiency and smooth, quiet operation. For added durability and push, Command Thrust models feature taller gearcases and 33% larger components. Just the job for bigger boats. These outboards are SmartCraft-ready and are equipped with turn-key starting for fast and reliable ignition. Never has Mariner dependability looked or sounded so good.

Features

PERFORMANCE

- Inherent FourStroke characteristics include quiet, smooth operation and exceptional idling.
- 40% better fuel economy than comparable 2-stroke models.
- Integral power trim adjusts boat's attitude for improved boat handling under a variety of speeds and water conditions.

5-YEAR WARRANTY

- Five-year limited non-declining, factory-backed. Conditions and exclusions apply.*
Not applicable for commercial and racing applications.
- Two-year limited commercial warranty.†

RUNNING QUALITY

- EFI models offer turn-key starting and instantaneous throttle response in all types of atmospheric conditions.
- Low-noise combustion process and sound-dampening cowls for extremely smooth and quiet operation.

RELIABILITY

- Designed for strength and durability.
- Corrosion resistant.
- Stainless steel driveshaft, shift shaft, prop shaft, water pump housings and power head fasteners.

TECHNOLOGY

- SmartCraft technology with Engine Guardian System; monitors engine functions and alerts you to possible engine problems. (optional extra)

*Terms & Conditions apply.

†2 Year Government/Commercial Warranty. Terms & Conditions apply. May require extra components. i.e. under cowl hour meter.



WHY CHOOSE MARINER



LARGE DISPLACEMENT 4-CYLINDER ENGINE

- A SOHC and long intake stroke design increases torque output for better acceleration.
- Performance with smooth quiet overall operation.

ELECTRONIC FUEL INJECTION EFI

- Provides turn-key reliable starting, instant throttle response, spectacular fuel economy and lower fuel system maintenance.
- More dependable, more efficient with more power and lower cost of operation.

HIGH OUTPUT ALTERNATOR

- 18 Amps provides superior battery charging capability.

EASY SHIFT OPERATION

- New precision engineered shift system delivers smooth shifting for an improved driving experience.
- Comfort and reliability.

TAKE IT SLOW

- SmartCraft TROLL CONTROL feature allows you to set your rpm as low as 700 for trolling. (optional extra)

FOUR STROKE	MARINER 50 hp	YAMAHA 50 hp	SUZUKI 50 hp	HONDA 50 hp
Engine Type	4 cylinder	4 cylinder	3 cylinder	3 cylinder
Displacement	996 cc	996 cc	941 cc	808 cc
Dry Weight*	112 kg	113 kg	104 kg	98 kg

*Lightest model available. Website specification comparison. Correct as of 01/09/2014



COMMAND THRUST'S GEARCASE

- Locates propeller deeper in the water. The lower position keeps the prop below turbulent water, allowing it to operate in cleaner, less aerated water.

COMMAND THRUST'S PROPELLER

- Designed with 20% more surface area than competitive props for greater performance.

COMMAND THRUST'S LOW GEAR RATIO

- The 2.33:1 ratio improves overall thrust and overall efficiency.

ADDITIONAL FEATURES & BENEFITS

SmartCraft	Delivers information regarding 23 key engine functions from fuel usage, rpm & engine guardian to slow trolling rpm control and even hull information
Power trim / tilt	Allows users to trim the unit for maximum performance / handling & shallow water operation
Freshwater flushing port	Rear mounted - flushes salt water and debris out of the engine extending the life of the outboard
Easy maintenance	Convenient oil drain and fill location, along with an automotive style spin-on filter
Tiller or remote steering	Standard models along with Big Tiller kit option allows rigging for all types of boating applications
18 Amp alternator	Maintains battery charge to run electronics, lights and other accessories
Precision shift system	Delivers smooth, quiet effortless shifting

FOUR STROKE	MARINER 60 hp Command Thrust	YAMAHA 60 hp High Thrust	HONDA 60 hp Power Thrust
Engine Type	4 cylinder	4 cylinder	3 cylinder
Displacement	996 cc	996 cc	998 cc
Dry Weight*	118 kg	119 kg	119 kg



MARINER

75EFI - 90EFI - 115EFI



DURABILITY AND PERFORMANCE

New

What if you could hang a lighter, lower-horsepower FourStroke outboard on your transom with out sacrificing speed, hole shot, driving experience or sheer pulling power? What if that outboard also delivered increased fuel savings, hassle-free maintenance and rugged reliability? Less weight and high displacement mean Mariner's new 75 - 115hp FourStrokes generate abundant torque and immediate power. Because they don't have to work as hard as heavier engines or those with lower displacement, these engines make boats plane faster, accelerate better and provide optimal fuel efficiency at cruising speed.

Features

PERFORMANCE

- Lightest in class providing better acceleration, fuel economy, all-out performance and precise manoeuvrability.
- High displacement leads to improved durability and longer life.

5-YEAR WARRANTY

- Five-year limited non-declining, factory-backed. Conditions and exclusions apply.*
Not applicable for commercial and racing applications.
- Two-year limited commercial warranty.†

RUNNING QUALITY

- Specialised crankshaft oil dams and bearings minimise the amount of oil left suspended in the crankcase, reducing friction and vibration.
- Hydrodynamic gearcase produces 15% less drag.

RELIABILITY

- Lightweight and large displacement designed for strength and durability.
- Corrosion resistant.
- Stainless steel driveshaft, shift shaft, prop shaft, water pump housings and power head fasteners.

TECHNOLOGY

- SmartCraft technology with Engine Guardian System; monitors engine functions and alerts you to possible engine problems.



*Terms & Conditions apply.

†2 Year Government/Commercial Warranty. Terms & Conditions apply. May require extra components. i.e. under cowl hour meter.

WHY CHOOSE MARINER



LIGHTWEIGHT DESIGN & EFFICIENT PERFORMANCE

- Best in class 2.1 litre displacement. Lightest 115hp in class at 163kg.
- Maintenance free, low friction SOHC valve train.

EASIEST TO RIG WITH IMPROVED DESIGN

- EZ fuel line connection, convenient battery cable access, quick connect throttle & shift cable, steering link rod attachment grouped wiring hook ups.

WORLD-CLASS HYDRODYNAMIC GEARCASE

- Delivers the best performance on lighter, performance orientated hulls.
- Less hydrodynamic drag means the engine works less hard.

SMOOTHEST OPERATION

- New trim system pump design manages trim movement in virtual silence.
- Exclusive focused mount system has higher durability & reduced vibration.

BEST SOUND QUALITY

- Tightly sealed cowl and lightweight thermal bond keeps noise in.
- Closed cell acoustic foam lining in driveshaft housing chaps.
- Top mounted throttle body allows for fine tuning intake noise to a much more pleasing lower tone.

35 AMP HEAVY DUTY ALTERNATOR

- A three-phase system with flywheel, dedicated stator and water-cooled voltage rectifier/regulator.
- Compact and lightweight it maintains the battery charge especially at lower rpm speeds.



PERFORMANCE-TUNED SCROLL INTAKE

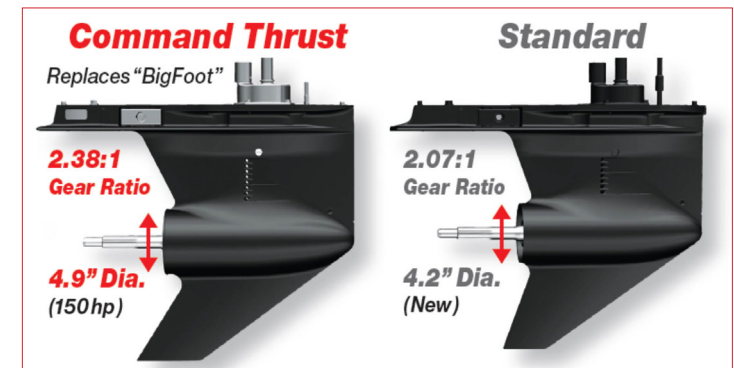
- Compact and simple design, uses a single throttle body and long intake runners to pack in more air to build torque. Top mounted for a more pleasing.
- Performance & sound quality

MULTI-PORT ELECTRONIC FUEL INJECTION

- Computer controlled. Easy, reliable starting (hot or cold). Precise metering for economy. Pressurized fuel system.
- Reliable starts & dependable, efficient performance.

COMMAND THRUST

- An industry first, takes the concept of using a larger gearcase on a smaller base powerhead..



FOUR STROKE	MARINER 115 hp	YAMAHA 115 hp	SUZUKI 115 hp
Dry Weight*	163 kg	171 kg	187 kg
FOUR STROKE	EVINRUDE 115 hp	NEW YAMAHA 115 hp	HONDA 115 hp
Dry Weight*	177 kg	167 kg	217 kg

*Lightest model available. Website specification comparison. Correct as of 01/09/2014

FOUR STROKE	MARINER 75/90hp	SUZUKI 75/80/90 hp	EVINRUDE 75/90 hp	HONDA 100hp	YAMAHA 90hp
Dry Weight*	163 kg	155 kg	145 kg	166 kg	166 kg
FOUR STROKE	MARINER 75/90hp	SUZUKI 75/80/90 hp	EVINRUDE 75/90 hp	HONDA 100hp	YAMAHA 90hp
Displacement	2.1 litre	1.5 litre	1.3 litre	1.5 litre	1.6 litre

*Website specification comparison. Correct as of 01/09/2014



150EFI



HIGHEST DISPLACEMENT

Big displacement, combined with the lightest weight and smaller package size means strong, long-lasting performance on light and heavy hulls alike. The 150 maximises your time on the water by making basic maintenance easy to do and quick to perform by you. The compact and lightweight design means the engine can be mounted on a tight boar transom. It is also flexible enough to accommodate mechanical or hydraulic steering. With 3.0 litre displacement this 4 cylinder SOHC design works less to produce more torque and horsepower, which means exceptional durability and long-term peace of mind.

Features

HIGHEST DURABILITY

- Largest displacement, lower stress.
- Massive torque for powerful acceleration.
- Large gearcase for low stress and improved lift.

5-YEAR WARRANTY

- Five-year limited non-declining, factory-backed. Conditions and exclusions apply.*
Not applicable for commercial and racing applications.
- Two-year limited commercial warranty.†

LIGHTEST WEIGHT & SMALLEST PACKAGE SIZE

- Almost 10kg lighter than nearest FourStroke competitor.
- The most compact and lowest profile 150 FourStroke.

EASY TO MAINTAIN

- Easy-change fuel filter and easy-drain oil system.
- Exclusive maintenance-free for life valve train and timing chain.

TECHNOLOGY

- SmartCraft technology with Engine Guardian System; monitors engine functions and alerts you to possible engine problems.



*Terms & Conditions apply.

†2 Year Government/Commercial Warranty. Terms & Conditions apply. May require extra components. i.e. under cowl hour meter.

WHY CHOOSE MARINER



LIGHTEST & SMALLEST 150HP AVAILABLE

- Mariner's cutting-edge engineering has packed incredible power into a small, light package. It has 18% fewer parts than competitive engines.
- Durable, compact power.

HIGHEST DISPLACEMENT IN 150HP CLASS

- At 3.0 litres this 4-cylinder SOHC design works less to produce more torque and horsepower.
- Smooth, quiet power.

CLASS LEADING CORROSION RESISTANCE

- XK 360 low copper alloy and MercFusion paint combine with extensive use of stainless steel for maximum protection.

LOW FRICTION VALVE TRAIN SOHC

- Race proven "Roller Finger Followers" and oversized valves offer a less complex design.
- Maintenance-free valve train.

PERFORMANCE-TUNED SCROLL INTAKE MANIFOLD

- Long intake runner ensures maximum efficiency, resulting in top performance.
- Responsive power.

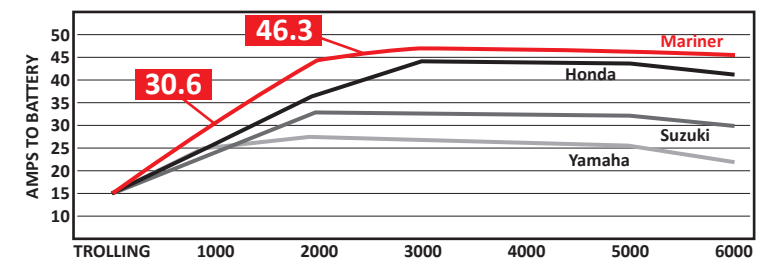
BEST IN CLASS BATTERY CHARGING SYSTEM

- Mercury's belt driven, "on-demand" alternator produces less heat over competitive magneto systems and only provides power when needed.
- 60 amp alternator produces a net charge of 30 amps at low speeds and 46 amps above 3000 rpm.



ADDITIONAL FEATURES & BENEFITS

Multi-port EFI	Reliable starts and dependable performance
Vibration management system	Balancer shafts ensure low transmitted vibration and the focused mounts mean smooth overall operation
11" rotated powerhead	Advanced engineering provides a narrow profile design, delivering smooth performance
Power flow exhaust	Efficient engine performance
Idle exhaust relief (sound)	Quiet operation makes it easy to converse
World-Class hydrodynamic gearcase	A durable 4.9 inch torpedo and low 1.92:1 gear ration means less drag for improved performance
Top cowl "Water-separating baffle" system	Inner liners redirect any water entering through the rear air intakes down to exit through a pair of drain holes in the rear side area. Powerhead stays dry
Fresh water flush	Flush with engine running at idle speed or turned off
SmartCraft digital or analog compatible instrumentation	Operator kept conveniently updated on critical engine functions with this engine management system
Optional Mariner Power Steering (for dual engines)	Automotive-like ease of steering, precise, responsive boat control & handling with no undesirable steering torque
Optional big tiller handle kit	Power steering, convenient up-front shift & power trim switch - all for precise comfortable control



FOUR STROKE	MARINER 150 hp	YAMAHA 150 hp	SUZUKI 150 hp	HONDA 150 hp
Engine Type	In-line 4	In-line 4	In-line 4	In-line 4
Displacement	3000 cc	2670 cc	2867 cc	2354 cc
Dry Weight*	206 kg	218 kg	223 kg	217 kg

*Lightest model available. Website specification comparison. Correct as of 01/09/2014



MARINER

VERADO 200



PROVIDING POWER WITH ABSOLUTE CONTROL

Ever-recognised that power without purpose is an exercise in futility, Mariner endowed the high-tech Verado range with unheard of levels of durability combined with silent and clean running, and a level of sophistication which appeals to serious powerboat users, worldwide. Ultimately, Verado is all about integrated propulsion, which blends power and responsiveness through SmartCraft Digital Throttle and Shift.

Features

TECHNOLOGY

- The Verado uses a 4 point progressive rate perimeter mount system that decreases vibration by 50%, improves stability and makes steering easier.
- SmartCraft technology with the Engine Guardian System, monitors engine functions and alerts you to possible engine problems.

PERFORMANCE

- Verado is the first ever supercharged inter-cooled FourStroke and delivers best-in-class torque and acceleration.
- SmartCraft Digital Throttle and Shift provide smooth, quiet shift engagement and instantaneous throttle response.

RELIABILITY

- Verado is the most proven marine power ever produced with more than 25,000 hours of testing.
- All major structural components were specifically designed and built for the supercharged Verado for maximum durability and reliability

5-YEAR WARRANTY

- Five-year limited non-declining, factory-backed. Conditions and exclusions apply.*
Not applicable for commercial and racing applications.
- Two-year limited commercial warranty.†

RUNNING QUALITY

- Dramatically better torque than any FourStroke and most TwoStrokes. From hole-shot to wide open throttle, mid-range acceleration exceeds that of any other outboard.

*Terms & Conditions apply.

†2 Year Government/Commercial Warranty. Terms & Conditions apply. May require extra components. i.e. under cowl hour meter.



WHY CHOOSE MARINER



VERADO'S SUPERCHARGED SYSTEM

- Delivers the torque big boats need for immediate planing superior mid-range acceleration and strong speed.
- Performance with smooth quiet overall operation.

CHARGE AIR COOLER

- Works with supercharger by cooling air before it enters the combustion chamber.
- Delivers optimal engine performance.

SMARTCRAFT DTS

- Digital Throttle and Shift delivers ultra smooth, quiet and responsive shifting/throttle operation requiring virtually no maintenance.
- Comfort with durability.

SMARTCRAFT MANAGEMENT SYSTEM

- Provides up to the minute information on everything from fuel management and boat speed to engine temperature and diagnostics.
- Improved efficiency based on more accurate information.

MAINTENANCE FREE VALVE TRAIN

- Maintenance free and maximum durability by optimised valve design and maximum combustion stability.
- Worry free durability.



ADDITIONAL FEATURES & BENEFITS

Water-to-oil heat exchanger	Exclusive to Verado. Provides consistent oil temperatures and prevents condensation and oil dilution for reliability and endurance
Optimal valve design	Ultimate level of durability and performance with a maintenance free valve train for the life of the engine
Electronic boost bypass valve	Controls the boost pressure from the supercharger to ensure consistent performance regardless of temperature or pressure
Long bolt powerhead design	Eliminates the effects of expansion and contraction to provide long term powerhead structure and durability
70 amp alternator	Provides battery charging on demand and allows use of electronics and lights
Idle exhaust relief system	Virtually no sound when engine runs at idle
Fresh water flush	Protects engine and allows for easy maintenance
Sequential multiport fuel injection	Ensures the perfect ratio of fuel and air to achieve optimal combustion efficiency providing consistent running quality and engine performance
4 valve / cylinder double overhead cam	Delivering class leading torque and horsepower throughout the power band to provide boat planing and acceleration
SmartCraft programmable tilt	Prevents engine from impacting with the short transom wells found on some boats. Feature lets you adjust the tilt limit to a point prior to maximum tilt
External mounted trim switch	Customer convenience when trailering
Front low water pickups	Consistent water pressure and engine cooling

FOUR STROKE	MARINER 200 hp	NEW YAMAHA 200 hp	SUZUKI 200 hp	HONDA 200 hp
Engine Type	In-line 4	In-line 4	55° V6	60° V6
Displacement	1733 cc	2785 cc	3614 cc	3471 cc
Dry Weight*	238 kg	221 kg	263 kg	265 kg
Alternator	70 amp	50 amp	54 amp	60 amp
Gear Ratio	2.08:1	1.86:1	2.50:1	1.86:1

*Lightest model available. Website specification comparison. Correct as of 01/09/2014



MARINER

VERADO 300



PROVIDING POWER WITH ABSOLUTE CONTROL

Ever-recognised that power without purpose is an exercise in futility, Mariner endowed the high-tech Verado range with unheard of levels of durability combined with silent and clean running, and a level of sophistication which appeals to serious powerboat users, worldwide. Ultimately, Verado is all about integrated propulsion, which blends power and responsiveness through SmartCraft Digital Throttle and Shift.

Features

TECHNOLOGY

- The Verado uses a 4 point progressive rate perimeter mount system that decreases vibration by 50%, improves stability and makes steering easier.
- SmartCraft technology with the Engine Guardian System, monitors engine functions and alerts you to possible engine problems.

PERFORMANCE

- Verado is the first ever supercharged inter-cooled FourStroke and delivers best-in-class torque and acceleration.
- SmartCraft Digital Throttle and Shift provide smooth, quiet shift engagement and instantaneous throttle response.

RELIABILITY

- Verado is the most proven marine power ever produced with more than 25,000 hours of testing.
- All major structural components were specifically designed and built for the supercharged Verado for maximum durability and reliability

5-YEAR WARRANTY

- Five-year limited non-declining, factory-backed. Conditions and exclusions apply.*
Not applicable for commercial and racing applications.
- Two-year limited commercial warranty.†

RUNNING QUALITY

- Dramatically better torque than any FourStroke and most TwoStrokes. From hole-shot to wide open throttle, mid-range acceleration exceeds that of any other outboard.

*Terms & Conditions apply.

†2 Year Government/Commercial Warranty. Terms & Conditions apply. May require extra components. i.e. under cowl hour meter.



WHY CHOOSE MARINER



VERADO'S SUPERCHARGED SYSTEM

- Delivers the torque big boats need for immediate planing superior mid-range acceleration and strong speed.
- Performance with smooth quiet overall operation.

CHARGE AIR COOLER

- Works with supercharger by cooling air before it enters the combustion chamber.
- Delivers optimal engine performance.

SMARTCRAFT DTS & MANAGEMENT SYSTEM

- Digital Throttle and Shift delivers ultra smooth, quiet and responsive shifting/throttle operation requiring virtually no maintenance.
- Provides up to the minute information on everything from fuel management and boat speed to engine temperature and diagnostics.
- Improved efficiency based on more accurate information.
- Comfort with durability.

MERCURY POWER STEERING

- This exclusive system eliminates steering torque while delivering a precise steering feel.
- Comfort with tight control.

MAINTENANCE FREE VALVE TRAIN

- Maintenance free and maximum durability by optimised valve design and maximum combustion stability.
- Worry free durability.



ADDITIONAL FEATURES & BENEFITS

Advanced mid-section AMS	Innovative position around the powerhead virtually eliminates engine related boat vibration
Long bolt powerhead design	Eliminates the effects of expansion and contraction to provide long term powerhead structure and durability
Digital throttle & shift system	SmartCraft DTS delivers automotive-like control, instant throttle response and smooth shifting
In-line 6-cylinder	Smoothest running quality, maximising torque and less noise
Electronic boost bypass valve	Controls the boost pressure from the supercharger to ensure consistent performance regardless of temperature or pressure
Water-to-oil heat exchanger	Consistent oil temperature prevents condensation and oil dilution
70 amp alternator	Provides battery charging on demand and allows use of electronics and lights
Idle exhaust relief system	Virtually no sound when engine runs at idle
Fresh water flush	Protects engine and allows for easy maintenance
Sequential multiport fuel injection	Ensures the perfect ratio of fuel and air to achieve optimal combustion efficiency providing consistent running quality and engine performance
4 valve / cylinder double overhead cam	Delivering class leading torque and horsepower throughout the power band to provide boat planing and acceleration
SmartCraft programmable tilt	Prevents engine from impacting with the short transom wells found on some boats. Feature lets you adjust the tilt limit to a point prior to maximum tilt
External mounted trim switch	Customer convenience when trailering
Front low water pickups	Consistent water pressure and engine cooling

FOUR STROKE	MARINER 300 hp	YAMAHA 300 hp	SUZUKI 300 hp
Engine Type	In-line 6	60° V6	55 V6
Displacement	2598 cc	4162 cc	4028 cc
Dry Weight*	299 kg	255 kg	279 kg
Alternator	70 amp	70 amp	54 amp
Gear Ratio	5.44" 1.85:1	1.75:1	2.08:1

*Lightest model available. Website specification comparison. Correct as of 01/09/2014



MARINER

VERADO 350



PROVEN PERFORMANCE AND DURABILITY

Ever-recognised that power without purpose is an exercise in futility, Mariner endowed the high-tech Verado range with unheard of levels of durability combined with silent and clean running, and a level of sophistication which appeals to serious powerboat users, worldwide. Ultimately, Verado is all about integrated propulsion, which blends power and responsiveness through SmartCraft Digital Throttle and Shift.

Features

TECHNOLOGY

- The Verado uses a 4 point progressive rate perimeter mount system that decreases vibration by 50%, improves stability and makes steering easier.
- SmartCraft technology with the Engine Guardian System, monitors engine functions and alerts you to possible engine problems.

PERFORMANCE

- Verado is the first ever supercharged inter-cooled FourStroke and delivers best-in-class torque and acceleration.
- SmartCraft Digital Throttle and Shift provide smooth, quiet shift engagement and instantaneous throttle response.

RELIABILITY

- Verado is the most proven marine power ever produced with more than 25,000 hours of testing.
- All major structural components were specifically designed and built for the supercharged Verado for maximum durability and reliability

5-YEAR WARRANTY

- Five-year limited non-declining, factory-backed. Conditions and exclusions apply.*
Not applicable for commercial and racing applications.
- Two-year limited commercial warranty.†

RUNNING QUALITY

- Dramatically better torque than any FourStroke and most TwoStrokes. From hole-shot to wide open throttle, mid-range acceleration exceeds that of any other outboard.

*Terms & Conditions apply.

†2 Year Government/Commercial Warranty. Terms & Conditions apply. May require extra components. i.e. under cowl hour meter.



WHY CHOOSE MARINER



VERADO'S UPGRADED SUPERCHARGED SYSTEM

- The intuitive Verado 350 design taps into the engine's cooling system to cool the supercharger and reduce the effort required to compress air, thereby increasing efficiency and durability.

CHARGE AIR COOLER

- The new cold-air intake system is designed to capture cool, fresh air from outside the cowl and deliver it directly and efficiently to the supercharger.
- Lower operating temperatures help improve the efficiency and durability of the engine, and its components.

SMARTCRAFT DTS & MANAGEMENT SYSTEM

- Digital Throttle and Shift delivers ultra smooth, quiet and responsive shifting/throttle operation requiring virtually no maintenance.
- Provides up to the minute information on everything from fuel management and boat speed to engine temperature and diagnostics.
- Improved efficiency based on more accurate information.
- Comfort with durability.

MERCURY POWER STEERING

- This exclusive system eliminates steering torque while delivering a precise steering feel.
- Comfort with tight control.

MAINTENANCE FREE VALVE TRAIN

- Maintenance free and maximum durability by optimised valve design and maximum combustion stability.
- Worry free durability.

FOUR STROKE	MARINER 350 hp	YAMAHA 350 hp	SUZUKI 300 hp
Engine Type	In-line 6	60° V6	55 V6
Displacement	2598 cc	4162 cc	4028 cc
Dry Weight*	303 kg	255 kg	279 kg
Alternator	70 amp	70 amp	54 amp
Gear Ratio	5.44" 1.85:1	1.75:1	2.08:1

*Lightest model available. Website specification comparison. Correct as of 01/09/2014



ADDITIONAL FEATURES & BENEFITS

Advanced mid-section AMS	Innovative position around the powerhead virtually eliminates engine related boat vibration
Long bolt powerhead design	Eliminates the effects of expansion and contraction to provide long term powerhead structure and durability
Digital throttle & shift system	SmartCraft DTS delivers automotive-like control, instant throttle response and smooth shifting
In-line 6-cylinder	Smoothest running quality, maximising torque and less noise
Electronic boost bypass valve	Controls the boost pressure from the supercharger to ensure consistent performance regardless of temperature or pressure
Water-to-oil heat exchanger	Consistent oil temperature prevents condensation and oil dilution
70 amp alternator	Provides battery charging on demand and allows use of electronics and lights
Idle exhaust relief system	Virtually no sound when engine runs at idle
Fresh water flush	Protects engine and allows for easy maintenance
Sequential multiport fuel injection	Ensures the perfect ratio of fuel and air to achieve optimal combustion efficiency providing consistent running quality and engine performance
4 valve / cylinder double overhead cam	Delivering class leading torque and horsepower throughout the power band to provide boat planing and acceleration
SmartCraft programmable tilt	Prevents engine from impacting with the short transom wells found on some boats. Feature lets you adjust the tilt limit to a point prior to maximum tilt
External mounted trim switch	Customer convenience when trailering
Front low water pickups	Consistent water pressure and engine cooling
Water-Cooled Supercharger	The intuitive Verado 350 design taps into the engine's cooling system to cool the supercharger and reduce the effort required to compress air, thereby increasing efficiency and durability

QUICKSILVER®

Marine Parts & Accessories

INDUSTRY LEADING PROTECTION

After taking a severe beating from rough waves, high levels of moisture and an extremely high throttle output, your marine engine requires scheduled care available from our genuine parts and accessories. With so many moving parts, your outboard lives on proven performance oils and lubricants specially designed by our experienced and knowledgeable engineers. Our specialized oils and lubricants are manufactured to give any outboard the best performance, making Quicksilver Lubricants your only choice during scheduled maintenance.



WON'T LET YOU DOWN

There's nothing more exciting than the first boat ride of the season – until the engine won't start due to fuel issues. Quicksilver can help keep your outboard running right with quality fuel additives and water-separating fuel filters. The advanced formulas of Quicksilver fuel products



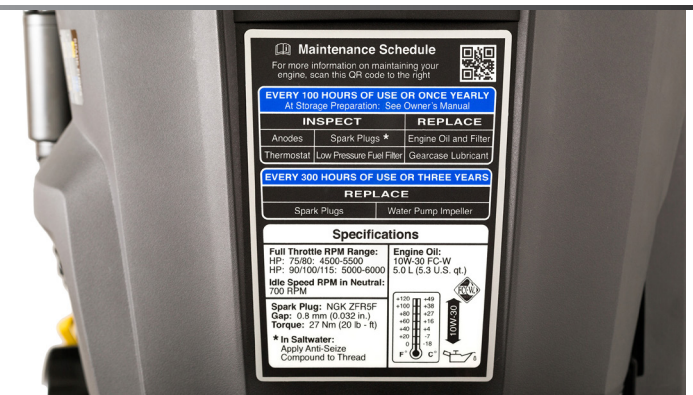
RECOMMENDED QUICKSILVER FOURSTROKE OILS

	Low HP 2.5 hp to 30 hp	Mid HP 40 hp to 115 hp	High HP above 115 hp	Verado
25W40	★★★	★★★	★★★	★★★
25W40 Synthetic Blend	★★★★	★★★★	★★★★	★★★★

NOTE: 10W30 is recommended in operating temperatures for use below 4°C for outboards (except Verado) and outboard 30hp and below with manual start

THE RIGHT ENGINEERING

A world-class engine should be maintained with world-class parts. Quicksilver Marine Parts & Accessories® are original parts and accessories, so they keep your engine within its original specifications. They should – they're designed by the same people who



Maintenance Schedule

For more information on maintaining your engine, scan the QR code to the right.

EVERY 100 HOURS OF USE OR ONCE YEARLY
At Storage Preparation: See Owner's Manual

INSPECT		REPLACE
Anodes	Spark Plugs *	Engine Oil and Filter
Thermostat	Low Pressure Fuel Filter	Gearcase Lubricant

EVERY 300 HOURS OF USE OR THREE YEARS

REPLACE	
Spark Plugs	Water Pump Impeller

Specifications

Full Throttle RPM Range:	75-80: 4500-5500	Engine Oil:	10W-30 FC-W
HP:	90/100/115: 5000-6000		5.0 L (5.3 U.S. qt.)
Idle Speed RPM in Neutral:	700 RPM		
Spark Plug:	NGK ZFR5F		
Gap:	0.8 mm (0.030 in.)		
Torque:	27 Nm (20 lb-ft)		

* In Saltwater:
Apply Anti-Seize Compound to Thread

SPECIFICATIONS



Models ⁽¹⁾	Kilowatts (HP) ⁽²⁾	Max. RPM at full throttle	Cylinders	Displacement	Starting	Gear ratio	Steering	Alternator system	Trim positions	Weight ⁽⁴⁾	Recommended boat transom height	Induction system	
MARINER FOURSTROKES													
150	150EFI	110.3 (150)	5000 - 5800	4 (in-line)	3000 cc	Electric (turn-key)	1.92:1	Remote	60 amp (756 watt)	Power trim standard	206 kg	508 mm (L) - 635 mm (XL)	4-valve dual overhead cam design
75 - 115	115 EFI - 90 EFI - 75EFI	84.6 (115) - 66.2 (90) - 55.2 (75)	115: 5000 - 6000 90-75: 4500 - 5500	4 (in-line)	2100 cc	SmartStart electric	2.07:1	Remote	35 amp (441 watt)	Power trim standard	115: 165 kg 90: 163 kg 75: 163 kg	115: 508 mm (L) - 635 mm (XL) 90 - 75: 508 mm (L)	4-valve single overhead cam design
40 - 60	60EFI + CT 50 EFI	44.1 (60) - 36.8 (50)	5500 - 6000	4 (in-line)	995 cc	Electric (turn-key)	1.83:1 BIGFOOT: 2.33:1	Remote	18 amp (226 watt)	Power trim standard	112 kg Command Thrust: 118 kg	508 mm (L)	2-valve single overhead cam design
	40 EFI	29.4 (40)	5500 - 6000	3 (in-line)	747 cc	Electric (turn-key)	2.00:1	Remote	18 amp (226 watt)	Power trim standard	98 kg	508 mm (L)	2-valve single overhead cam design
25 - 30	30 ⁽³⁾ - 25 EFI ⁽³⁾	22.1 (30) - 18.4 (25)	30: 5250 - 6250 25: 5000 - 6000	3 (in-line)	526 cc	Manual or electric (turn-key)	1.92:1	Tiller or remote	15 amp (186 watt)	30: Gas assist or power trim 25: Power trim	30: 78 kg 25: 71 kg	381 mm (S) 508 mm (L)	2-valve single overhead cam design
15 - 20	20 ⁽³⁾ - 15 ⁽³⁾	14.7 (20) - 11 (15)	20: 5400 - 6100 15: 5400 - 5600	2 (in-line)	351 cc	Manual or electric	2.51:1	Tiller or remote	12 amp (138 watt)	6 & shallow water drive	52 kg	381 mm (S) 508 mm (L)	2-valve single overhead cam design
8 - 9.9	9.9 ⁽³⁾ - 8 ⁽³⁾	7.28 (9.9) - 5.88 (8)	5000 - 6000	2 (in-line)	208 cc	Manual or electric	2.08:1	Tiller	6 amp (76 watt) on electric start models	6 & shallow water drive	38 kg	381 mm (S) 508 mm (L)	2-valve single overhead cam design
2.5 - 6	6 ⁽⁵⁾ - 5 ⁽⁵⁾ - 4 ⁽⁵⁾ + 5 SAILMATE ⁽⁵⁾	4.41 (6) - 3.68 (5) - 2.94 (4)	6: 5000 - 6000 5 - 4: 4500 - 5500	1	123 cc	Manual	2.15:1	Tiller	Optional 4 amp (50 watt) lighting, 2 amp (25 watt) charging 5 SAILMATE: Standard with rectifier	6 & shallow water drive	25 kg	381 mm (S) 508 mm (L) 5 SAILMATE: 508 mm (L)	2-valve pushrod
	3.5 ⁽⁶⁾ - 2.5 ⁽⁶⁾	2.57 (3.5) - 1.84 (2.5)	3.5: 5000 - 6000 2.5: 4500 - 5500	1	85 cc	Manual	2.15:1	Tiller	n/a	4	17 kg	3.5: 381 mm (S) - 508 mm (L) 2.5: 381 mm (S)	2-valve
MARINER VERADO													
300 - 350	Verado 350 - Verado 300	261 (350) - 221 (300)	5800 - 6400	6 (in-line)	2598 cc	Electric (turn-key)	1.85:1	Electro-hydraulic power steering with integral hydraulic cylinder	Fully regulated belt-driven 70 amp (882 watt)	SmartCraft - programmable power trim and tilt	303 kg - 288 kg	635 mm (XL) ⁽⁷⁾	SmartCraft DTS (Digital Throttle & Shift), supercharged with charge air cooling and electronic boost pressure control

For more information on the propeller that is right for you, please see your dealer.
 Fuel requirements: FourStroke and Verado: Unleaded 90 RON min. 300 Verado: Unleaded 98 RON recommended for maximum performance.
 Gear shift: Forward (F), Neutral (N), Reverse (R), except F2.5 - F3.5:F-N.

(1) Model offering may vary from one of country to another. Please see your local dealer for specific information. (2) Measured at propshaft in accordance with ICOMIA 28.
 (3) Requires rectifier to complete installation manual versions. Standard on 5 Sailmate model. (4) Dry weight specification is for lightest model and excludes engine oil, rigging hardware and propeller. (5) Integrated fuel tank 1.1 litre. (6) Integrated fuel tank 0.95 litre. (7) Counter rotation available on XL models.



E. P. Barrus Ltd., Glen Way, Launton Road, Bicester, Oxfordshire, OX26 4UR
 Tel: 01869 326403 Fax: 01869 363673 marine@barrus.co.uk



The Power Behind The Brands **BARRUS** www.barrus.co.uk