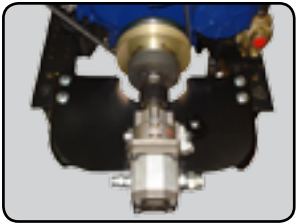
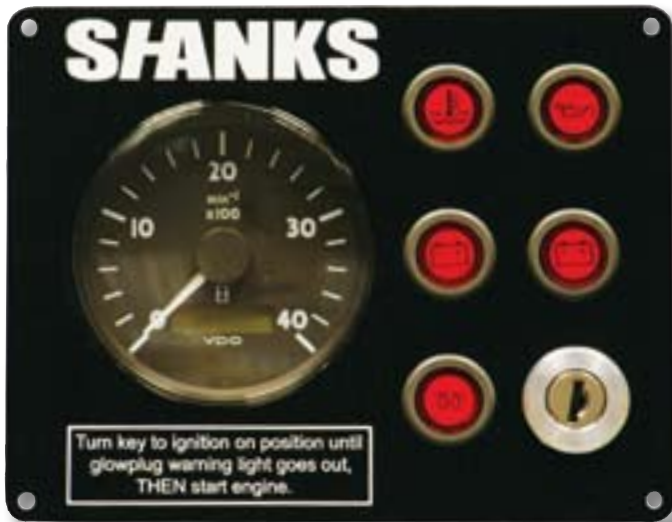


SHANKS WB43



Hydraulic clutch and pump unit can be retro-fitted to existing rails



Start/Stop keyswitch

Tachometer

Warning light for low oil pressure

High engine temperature

2x no battery charge

Glow plug warning

4-cylinder, 4-stroke, 1800cc diesel engine
Water cooled via crankshaft driven seawater pump
43hp (31kW) @ 2800 rpm
Peak torque = 95Nm @ 2000rpm
Shanks MA125A hydraulic gearbox, 2:1 ratio
Engine & gearbox oil cooler
Twin fuel filters including pre-filter water drain
Low noise air cleaner
2 sacrificial anodes
Emission compliant engines with written declaration of conformity
Owners manual including installation, servicing & technical information
Control Panel inc tacho, hour meter, visual and audible alarm (single alt)
Electric 12v glow plug cold start & stop (engine to run) systems
Single 12v 70amp alternator
Heavy duty rails and flexible anti vibration mounts
Morse cable fittings on engine speed & gearbox controls
Low noise air cleaner
Water-cooled exhaust manifold
Engine oil extraction pump fitted
Combined fuel pre filter/water trap with drain tap
Fuel system and hoses comply with RCD and BW Boat Safety Scheme
Owners spare parts kit
Sea water strainer and non collapsible inlet hose and clips

2 Years or 2000 hours leisure warranty

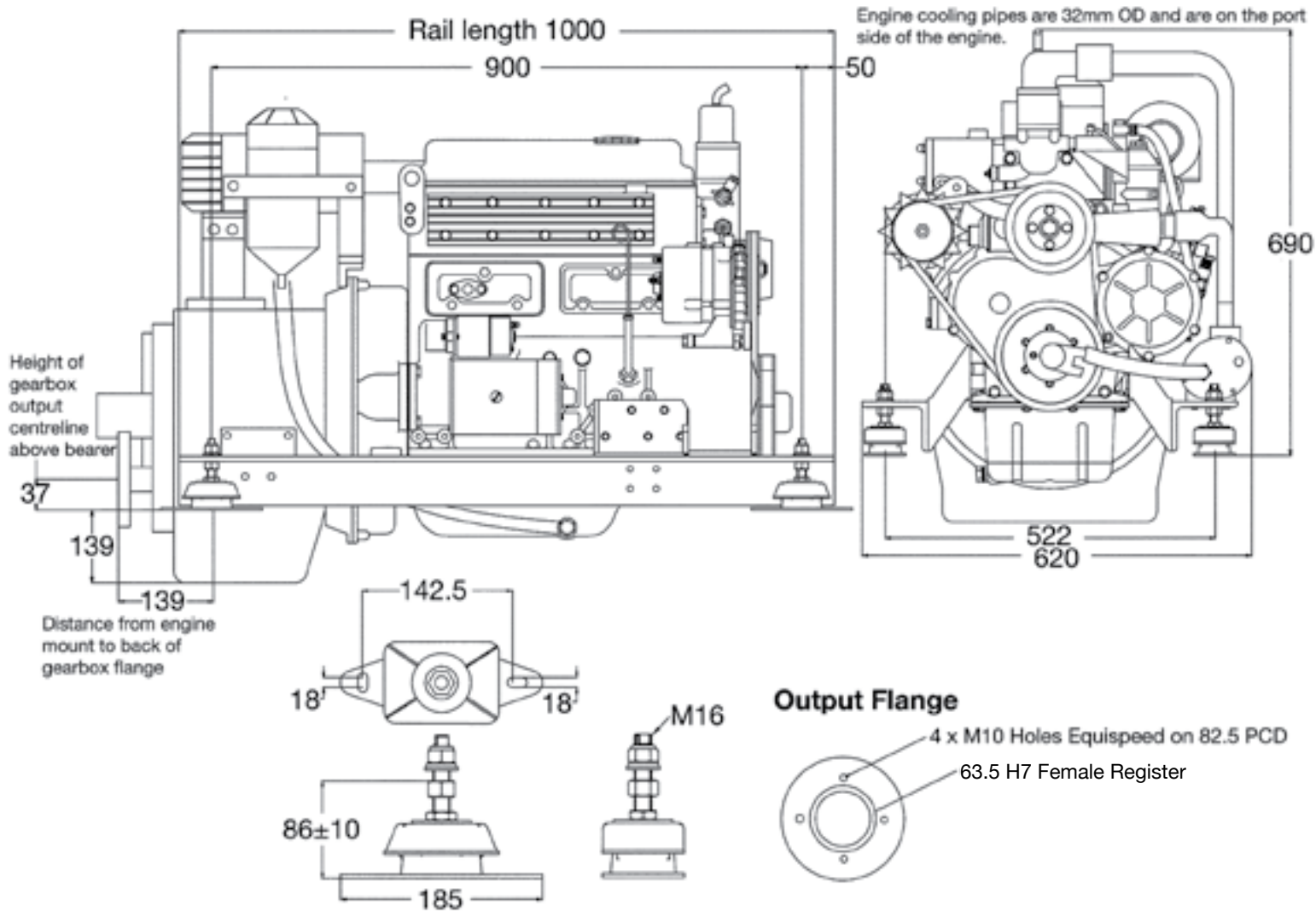
1 Year or 1000 hours commercial warranty

1 Year warranty on electrical components

Options

1. Deluxe Control Panel inc tacho, hour meter, visual and audible alarm, coolant temp, oil pressure and volt gauges
2. Calorifier connections
3. Twin alternators- 12v 40 and 110amp
4. Centa gearbox output drive coupling
5. Aquadrive flexible drive coupling
6. Gearbox extraction pump





Accessories

Centaflex Coupling/ Propeller/Shaft

CENTAFLEX-R is one of the quietest, most reliable transmission couplings in the market. Compatible with all engine and gearbox types, the couplings eliminate vibration from the engine and gearbox, substantially reducing transmission noise. (Standard fit on all Shanks modles)



Python-Drive

The ultimate contribution to peace and quiet on the board. A Python-Drive System will reduce structure borne noise and vibration by up to 90%. It will reduce overall noise levels by up to 75% and end shaft alignment problems on installation. The Python-Drive is an optional fit on all Shanks engines.



Python-Drive

AUTHORISED DEALER

Distributed in the UK by: **E. P. Barrus Ltd**,
 Launton Road, Bicester, Oxfordshire, OX26 4UR
 For more information contact Chris Pearce on:
 07710 900340 E-mail: chris.pearce@barrus.co.uk



E.P. Barrus Ltd reserves the right to change specification without notice.