

# SHANKS RB37

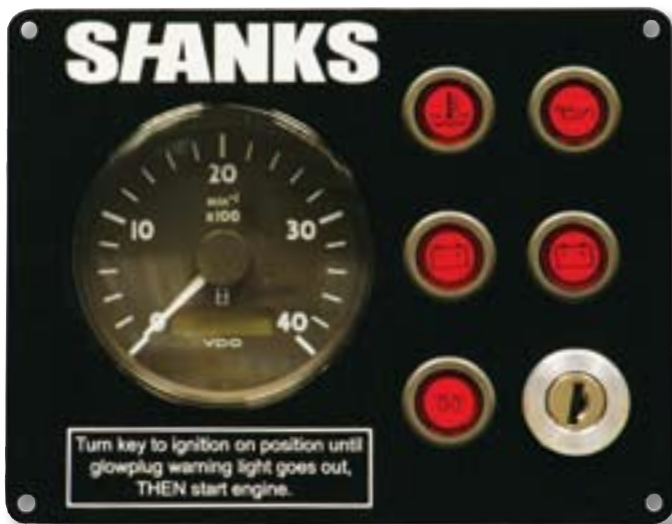


4-cylinder, 4-stroke, 1800cc diesel engine  
Water cooled via crankshaft  
driven seawater pump  
37hp (27kW) @ 2800 rpm  
Peak torque = 85Nm @ 2000rpm  
Shanks MA100A hydraulic gearbox, 2:1 ratio  
Engine & gearbox oil cooler  
Twin fuel filters including pre-filter  
water drain  
Low noise air cleaner  
2 sacrificial anodes  
Emission compliant engines with written  
declaration of conformity  
Owners manual including installation,  
servicing & technical information  
Control Panel inc tacho, hour meter, visual  
and audible alarm (single alt)  
Electric 12v glow plug cold start & stop  
(energise to run) systems  
Single 12v 70amp alternator  
Heavy duty rails and flexible anti  
vibration mounts  
Morse cable fittings on engine speed &  
gearbox controls  
Low noise air cleaner  
Water-cooled exhaust manifold  
Engine oil extraction pump fitted  
Combined fuel pre filter/water trap  
with drain tap  
Fuel system and hoses comply with RCD and  
BW Boat Safety Scheme  
Owners spare parts kit  
Sea water strainer and non collapsible inlet  
hose and clips

2 Years or 2000 hours leisure warranty  
1 Year or 1000 hours commercial warranty  
1 Year warranty on electrical components

## Options

1. Deluxe Control Panel inc tacho, hour meter, visual and audible alarm, coolant temp, oil pressure and volt gauges  
Twin alternators- 12v 40 and 110amp
2. Calorifier connections
3. R&D gearbox drive plate
4. Centa gearbox output drive coupling
5. Aquadrive flexible drive coupling
6. Gearbox extraction pump



Start/Stop keyswitch

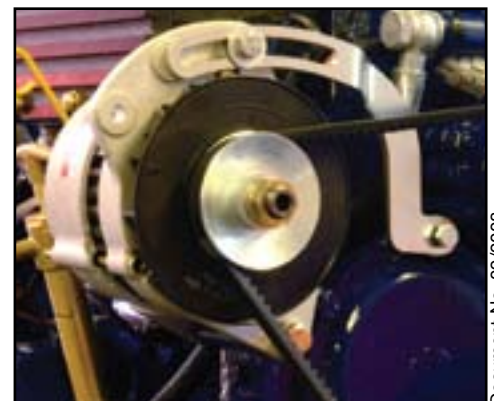
Tachometer

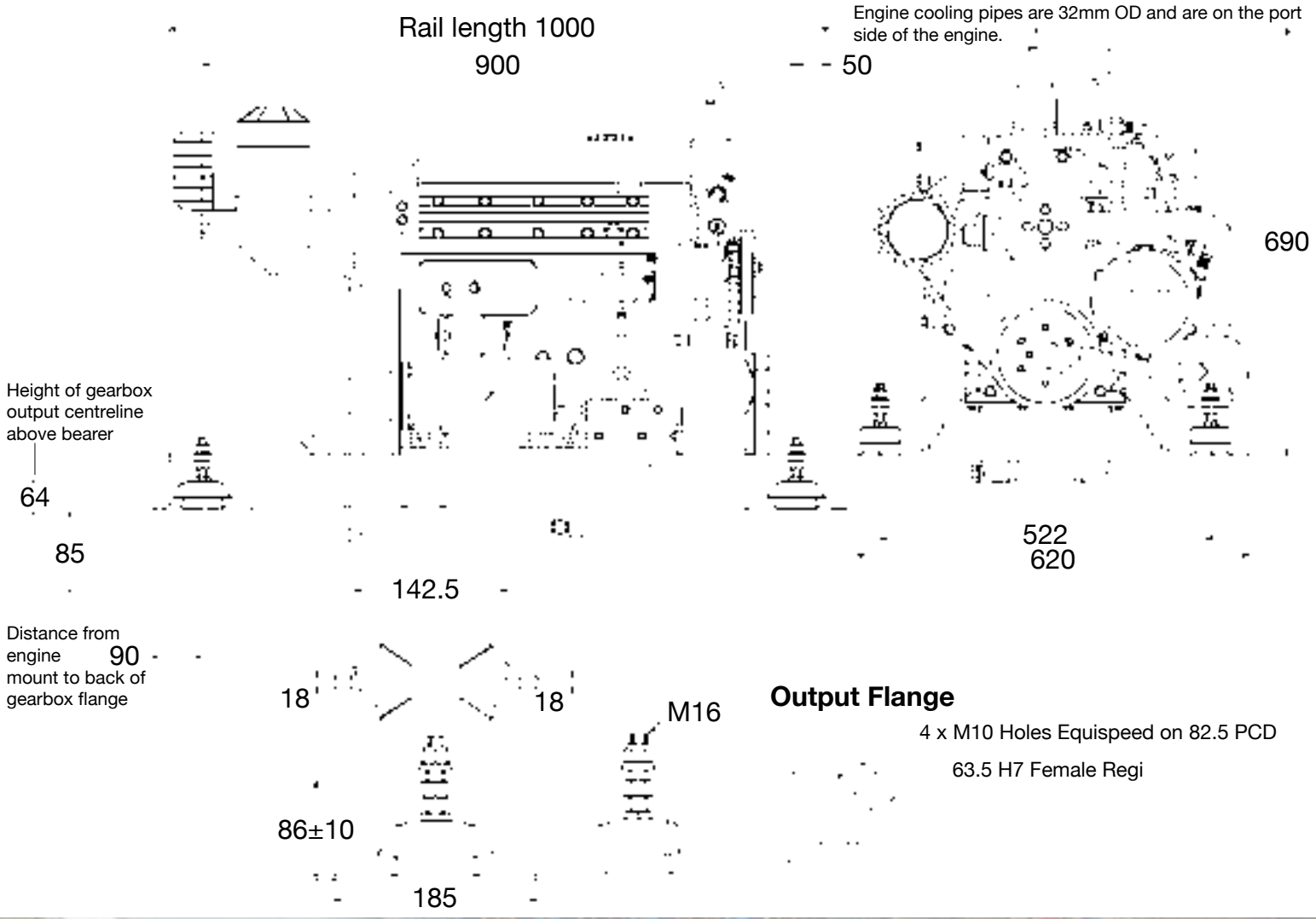
Warning light for low oil pressure

High engine temperature

2x no battery charge

Glow plug warning

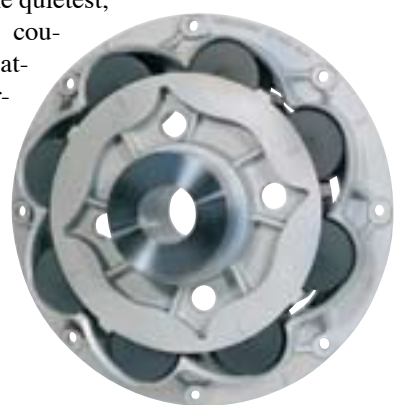




# Accessories

## Centaflex Coupling/ Propeller/Shaft

CENTAFLEX-R is one of the quietest, most reliable transmission couplings in the market. Compatible with all engine and gearbox types, the couplings eliminate vibration from the engine and gearbox, substantially reducing transmission noise. (Standard fit on Shire 65 & 90)



## Aquadrive System

The ultimate contribution to peace and quiet on board. An Aquadrive System will reduce structure borne noise and vibration by up to 90%. It will reduce overall noise levels by up to 75% and end shaft alignment problems on installation. The Aquadrive is an optional fit on all Shire engines.



AUTHORISED DEALER

Distributed in the UK by: **E. P. Barrus Ltd**,  
Launton Road, Bicester, Oxfordshire, OX26 4UR  
For more information contact Chris Pearce on:  
07710 900340 E-mail: [chris.pearce@barrus.co.uk](mailto:chris.pearce@barrus.co.uk)



E.P. Barrus Ltd reserves the right to change specification without notice.