

1917

Company was founded by **Mr. E. P. Barrus** in London.

1920s

The company became European distributor for numerous US manufacturers of precision hand and machine tools.

Following many racing successes Barrus entered the marine outboard market importing US built **Johnson & Lycoming** marine engines.

Late 1920s

Barrus entered the **automotive market** supplying garage tools and equipment including the first remote controlled electric garage doors plus an exclusive range of machine tools.

1930s

A unique **exhibition garage and training school** was set up on the Thames Embankment.

Late 1930s

Purpose-built works **opened in Acton** designed to withstand bombing raids.

1940s

Barrus became the essential life-line for Britain with the **supply of hand tools, cutting tools, military tools and marine engines to the UK War Department and the Ministry of Supply.**

Barrus manufacture **portable hydraulic equipment** under the Blackhawk name as well as ARO pneumatic tools.

1950s

Barrus entered the **Lawn & Garden market** as distributors of the 'Lawnboy' rotary mowers.

1960s

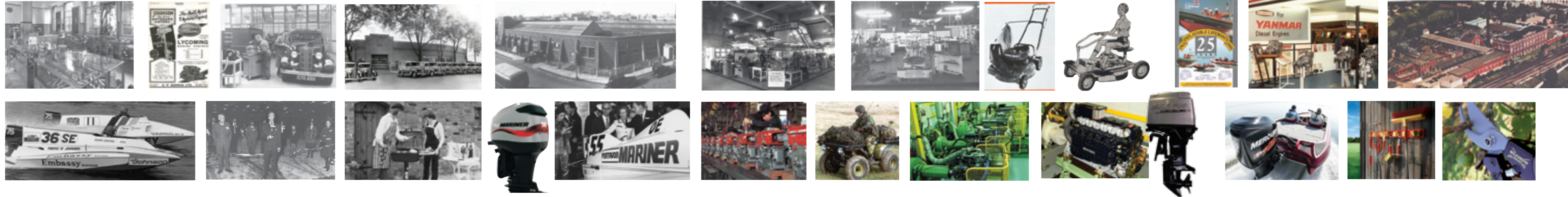
Barrus **pioneered the early ride-on mower** and the innovative **grass collection system 'Direct collect'** manufactured and sold under the Barrus brand name of Mow Master.

Sole supplier of outboard engines to the Special Forces, Army, Navy, Royal Marines and Coastguard Services. Supplied half of the outboard engine requirement to the **RNLI** for 'D' Class lifeboats.

Barrus appointed **exclusive UK distributor for Yanmar Marine diesel engines.**

1970s

Barrus became the **first export customer for the Modern Tool and Die Company (MTD)** based in Cleveland, Ohio distributing the Lawnlite brand of garden machinery.



1970s

The company **achieved AQAP 1** (Allied Quality Assurance Plan No 1) – the top military quality standard.

1975

The **Formula Johnson BBC "Grand-stand Trophy" races** held at Fairford, Gloucestershire was an innovative event organised by Robert Glen. The top ten under 1,000cc drivers competed in a series of ten lap races.

1977

Barrus **re-located to Bicester**, Oxfordshire.

Late 1970s

Barrus's innovations included the **UKs first gas-fired garden barbecues.** Product introductions included Zodiac inflatable boats and life rafts, Oleo-Mac chainsaws and Hitachi electric power tools.

Barrus was appointed **distributor of Mariner outboard engines.**

Barrus promoted Mariner outboard engines through powerboat racing with **team Mariner** achieving an impressive series of national and international successes.

1980s

The Industrial Engine Division was established – **Barrus introduced Yanmar L-Series**, air-cooled, clean diesel engines – the first industrial engines to meet CARB regulations.

Barrus developed the **world's first diesel All-Terrain Vehicle, the D-BAT** – the Vehicle Division was established.

1990s

The company achieved the **highest quality standard in the commercial world, ISO 9001** (now ISO 9001-2008).

£1m investment to create the **world's largest custom engine building facilities.**

2000 onwards

Barrus **awarded long term supply contract by the MoD** for the supply, overhaul and repair of all **outboard engines, inboard diesel engines**, post design services and in-service support.

Barrus designed and built **trial multi fuel outboard engines for the UK MoD.**

Barrus was appointed **distributor of MerCruiser inboard marine engines and Mercury outboard engines.**

Barrus was appointed **distributor of WOLF-Garten garden tools and machinery.**

Barrus secured a **Licence Agreement for Wilkinson Sword** garden tools.

Barrus appointed **distributor for the Quicksilver range of leisure and fishing boats.** Barrus appointed **distributors for AB inflatable boats.**

Loncin petrol engines, generators and pumps were introduced into the newly formed Power Products Division.

Barrus appointed **distributor of Toyota CNG, NG and LPG engines and Energizer batteries and torches.**